

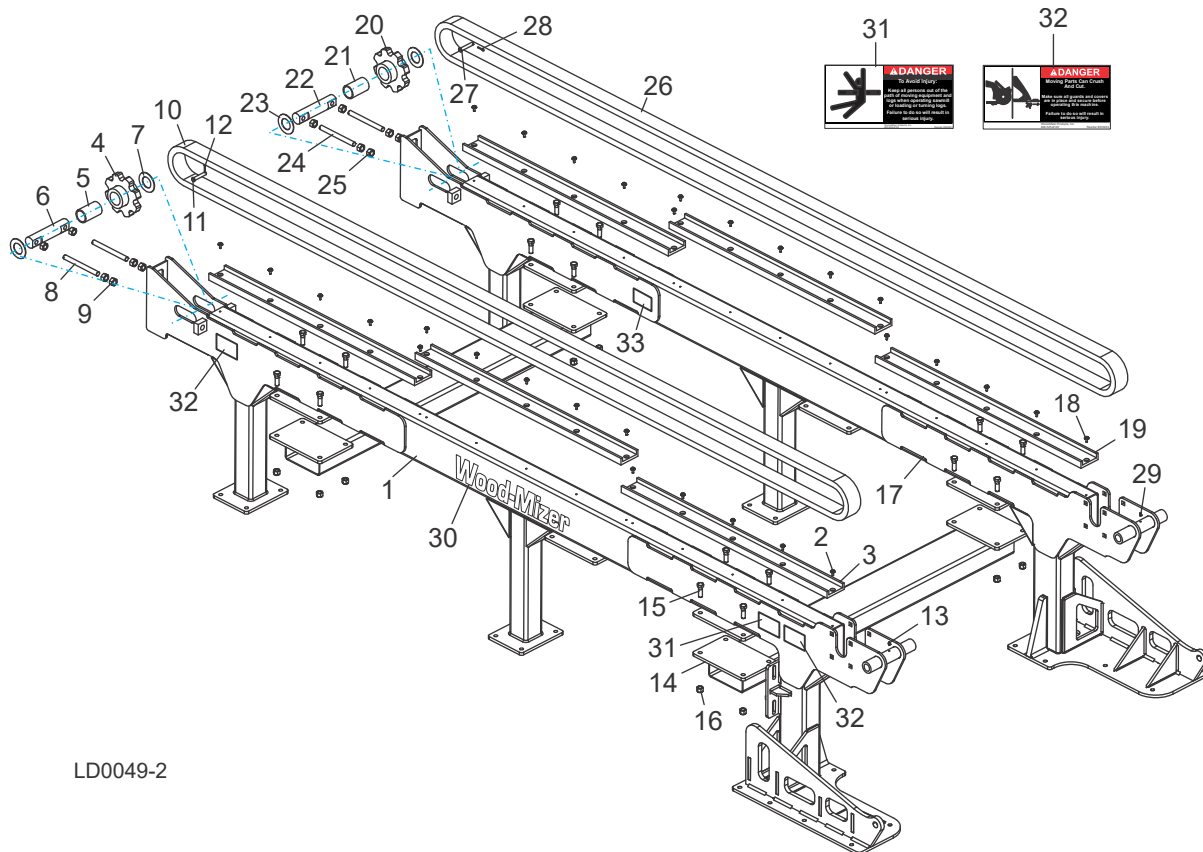
4 Replacement Parts

Rail Assembly, 12-Foot Right & Left

SECTION 4 REPLACEMENT PARTS

4.1 Rail Assembly, 12-Foot Right & Left

Rev. B2.00+



LD0049-2

REF	DESCRIPTION (◆ Indicates Parts Available In Assemblies Only)	PART #	QTY.
	RAIL ASSEMBLY, 12-FEET RIGHT (LD12-1)	065856	1
	RAIL ASSEMBLY, 12-FEET RIGHT (LD12)	065930	1
1	Tube Weldment, 12-Foot Infeed Deck Main Right (LD12-1)	065854	1
	Tube Weldment, 12-Foot Infeed Deck Main Right (LD12)	065928	1
2	Bolt, 1/4-20 x 3/4" Hex Head w/Washer&Patch	F05005-207	15
3	Channel, UHMW Conveyor	033722	3
	Sprocket Assembly, Idler WR7808	033715	1
4	Sprocket Weldment, Idler WR7808	036717	1
5	Bushing, 1 15/16" x 2 5/16" x 3 3/4" Bronze	036708	1
6	Shaft, Chain Idler	033718	1
7	Washer, 1.95" ID X 4" OD X .078"	033735	2
8	Stud, 3/4-16 X 7 3/4" Threaded	017642	2

Replacement Parts 4

Rail Assembly, 12-Foot Right & Left

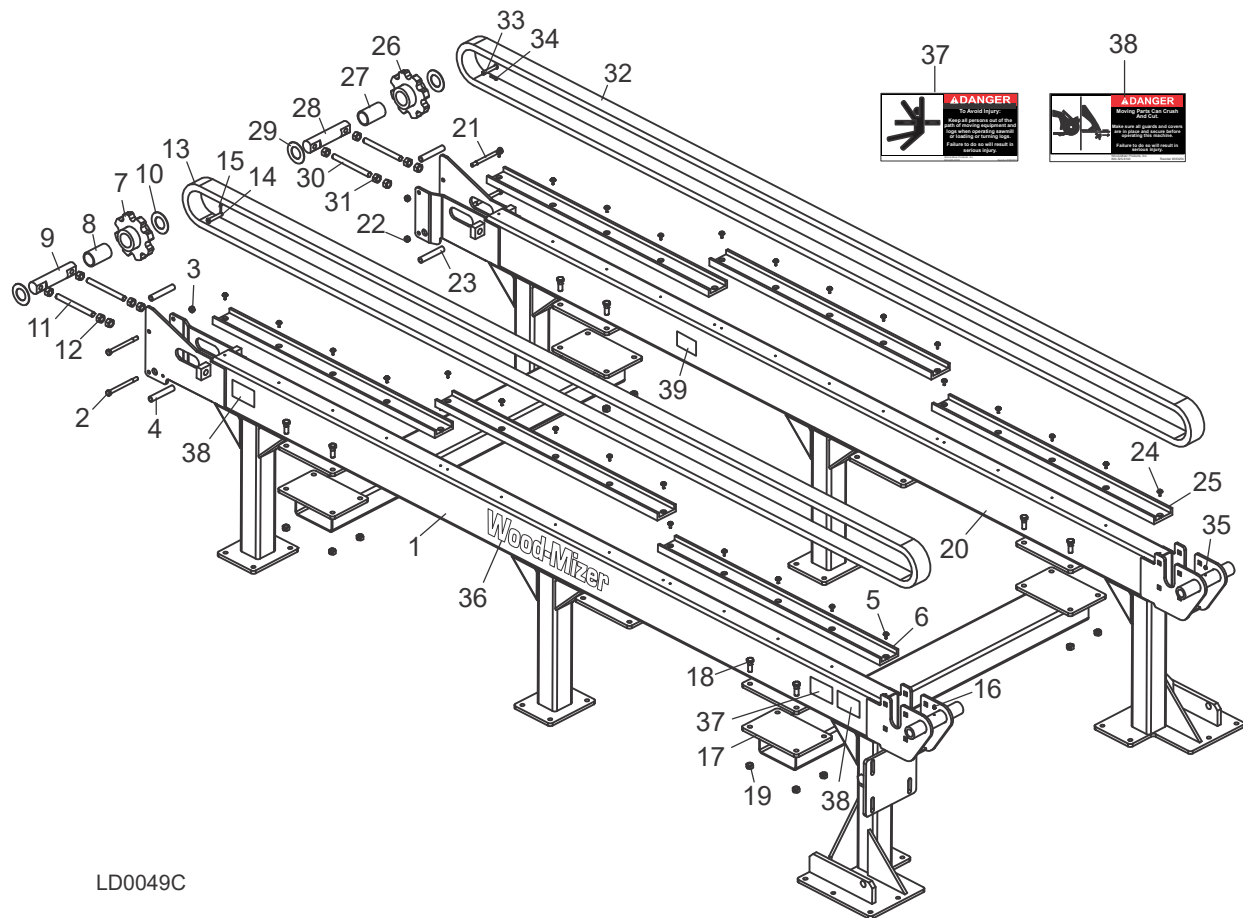
9	Nut, 3/4-16 Hex	F05010-92	6	
10	Chain, 12-Foot Infeed Deck	033760	1	
11	Pin, WR78 Chain Connecting	017643	1	
12	Pin, 5/32" x 1" Cotter	F05012-112	1	
13	Fitting, 3/16" x 3/16" Straight Grease	P04107	1	
14	CROSS TUBE WELDMENT, INFEED	035767	2	
15	BOLT, 5/8-11 X 1 3/4 HEX HEAD	F05009-33	16	
16	NUT, 5/8-11 HEX LOCK	F05010-4	16	
	RAIL ASSEMBLY, 12-FEET LEFT (LD12-1)	065855	1	
	RAIL ASSEMBLY, 12-FEET LEFT (LD12)	065929	1	
17	Tube Weldment, 12-Feet Infeed Deck Main Left (LD12-1)	065853	1	
	Tube Weldment, 12-Feet Infeed Deck Main Left (LD12)	065927	1	
18	Bolt, 1/4-20 x 3/4" Hex Head w/Washer&Patch	F05005-207	15	
19	Channel, UHMW Conveyor	033722	3	
	Sprocket Assembly, Idler WR7808	033715	1	
20	Sprocket Weldment, Idler WR7808	036717	1	
21	Bushing, 1 15/16" x 2 5/16" x 3 3/4" Bronze	036708	1	
22	Shaft, Chain Idler	033718	1	
23	Washer, 1.95" ID X 4" OD X .078"	033735	2	
24	Stud, 3/4-16 X 7 3/4" Threaded	017642	2	
25	Nut, 3/4-16 Hex	F05010-92	6	
26	Chain, 12-Foot Infeed Deck	033760	1	
27	Pin, WR78 Chain Connecting	017643	1	
28	Pin, 5/32" x 1" Cotter	F05012-112	1	
29	Fitting, 3/16" x 3/16" Straight Grease	P04107	1	
30	DECAL, 27" WHITE WOOD-MIZER LOGO	074077	2	
31	DECAL, KEEP AWAY DANGER	S09851	2	
32	DECAL, MOVING PARTS DANGER	033254	4	
33	DECAL, REVISION	016187	1	

4 Replacement Parts

Rail Assembly, 12-Foot Right & Left

4.2 Rail Assembly, 12-Foot Right & Left

Rev. B1.00 - B1.03



LD0049C

REF	DESCRIPTION (◆ Indicates Parts Available In Assemblies Only)	PART #	QTY.
	RAIL ASSEMBLY, 12-FEET RIGHT (LD12-1)	065856 ¹	1
	RAIL ASSEMBLY, 12-FEET RIGHT (LD12)	065930	1
1	Tube Weldment, 12-Foot Infeed Deck Main Right (LD12-1)	065854 ¹	1
	Tube Weldment, 12-Foot Infeed Deck Main Right (LD12)	065928	1
2	Bolt, 1/2-13 X 6" Hex Head Grade 5	F05008-107	2
3	Nut, 1/2-13 Hex Lock	F05010-3	2
4	Pipe, 1/2" x 4 13/16" Sch 40	035763	2
5	Bolt, 1/4-20 x 3/4" Hex Head w/Washer&Patch	F05005-207	15
6	Channel, UHMW Conveyor	033722	3
	Sprocket Assembly, Idler WR7808	033715	1
7	Sprocket Weldment, Idler WR7808	036717	1
8	Bushing, 1 15/16" x 2 5/16" x 3 3/4" Bronze	036708	1
9	Shaft, Chain Idler	033718	1

Replacement Parts 4

Rail Assembly, 12-Foot Right & Left

10	Washer, 1.95" ID X 4" OD X .078"	033735	2	
11	Stud, 3/4-16 X 7 3/4" Threaded	017642	2	
12	Nut, 3/4-16 Hex	F05010-92	6	
13	Chain, 12-Foot Infeed Deck	033760	1	
14	Pin, WR78 Chain Connecting	017643	1	
15	Pin, 5/32" x 1" Cotter	F05012-112	1	
16	Fitting, 3/16" x 3/16" Straight Grease	P04107	1	
17	CROSS TUBE WELDMENT, INFEED	035767	2	
18	BOLT, 5/8-11 X 1 3/4 HEX HEAD	F05009-33	16	
19	NUT, 5/8-11 HEX LOCK	F05010-4	16	
	RAIL ASSEMBLY, 12-FEET LEFT (LD12-1)	065855 ¹	1	
	RAIL ASSEMBLY, 12-FEET LEFT (LD12)	065929	1	
20	Tube Weldment, 12-Feet Infeed Deck Main Left (LD12-1)	065853	1	
	Tube Weldment, 12-Feet Infeed Deck Main Left (LD12)	065927	1	
21	Bolt, 1/2-13 X 6" Hex Head Grade 5	F05008-107	2	
22	Nut, 1/2-13 Hex Lock	F05010-3	2	
23	Pipe, 1/2" x 4 13/16" Sch 40	035763	2	
24	Bolt, 1/4-20 x 3/4" Hex Head w/Washer&Patch	F05005-207	15	
25	Channel, UHMW Conveyor	033722	3	
	Sprocket Assembly, Idler WR7808	033715	1	
26	Sprocket Weldment, Idler WR7808	036717	1	
27	Bushing, 1 15/16" x 2 5/16" x 3 3/4" Bronze	036708	1	
28	Shaft, Chain Idler	033718	1	
29	Washer, 1.95" ID X 4" OD X .078"	033735	2	
30	Stud, 3/4-16 X 7 3/4" Threaded	017642	2	
31	Nut, 3/4-16 Hex	F05010-92	6	
32	Chain, 12-Foot Infeed Deck	033760	1	
33	Pin, WR78 Chain Connecting	017643	1	
34	Pin, 5/32" x 1" Cotter	F05012-112	1	
35	Fitting, 3/16" x 3/16" Straight Grease	P04107	1	
36	DECAL, 27" WHITE WOOD-MIZER LOGO	074077	2	
37	DECAL, KEEP AWAY DANGER	S09851	2	
38	DECAL, MOVING PARTS DANGER	033254	4	
39	DECAL, REVISION	016187	1	

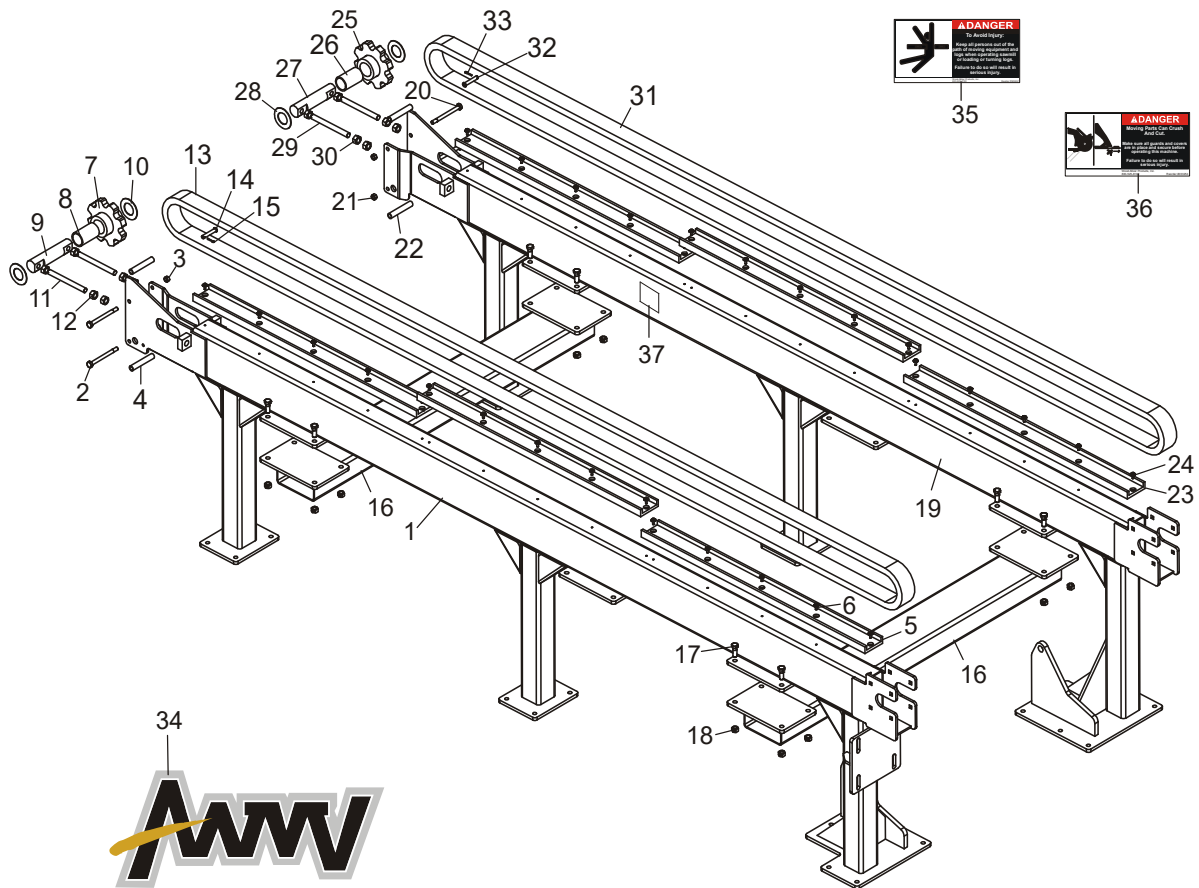
¹ LD12-1 used for LT300 Rev. A7.00+ to accommodate 8" additional height of LT300.

4 Replacement Parts

Rail Assembly, 12-Foot Right & Left

4.3 Rail Assembly, 12-Foot Right & Left

Rev. A1.00 - A2.03



LD0002D

REF	DESCRIPTION (◆ Indicates Parts Available In Assemblies Only)	PART #	QTY.
	RAIL ASSEMBLY, 12-FEET RIGHT (LD12-1)	036499 ¹	1
	RAIL ASSEMBLY, 12-FEET RIGHT (LD12)	033727-1	1
	RAIL ASSEMBLY, 12-FEET RIGHT (ORANGE LD12)	033727 ²	1
1	Tube Weldment, 12-Foot Infeed Deck Main Right (LD12-1)	036500 ¹	1
	Tube Weldment, 12-Foot Infeed Deck Main Right (LD12)	033726-1	1
	Tube Weldment, 12-Foot Infeed Deck Main Right (Orange LD12)	033726 ²	1
2	Bolt, 1/2-13 X 6" Hex Head Grade 5	F05008-107	2
3	Nut, 1/2-13 Hex Lock	F05010-3	2
4	Pipe, 1/2" x 4 13/16" Sch 40	035763	2
5	Channel, UHMW Conveyor	033722	3
6	Bolt, 1/4-20 x 3/4" Hex Head w/Washer&Patch	F05005-207	15
	Sprocket Assembly, Idler WR7808	033715 ³	1
7	Sprocket Weldment, Idler WR7808	036717	1

Replacement Parts 4

Rail Assembly, 12-Foot Right & Left

8	Bushing, 1 15/16" x 2 5/16" x 3 3/4" Bronze	036708	1	
9	Shaft, Chain Idler	033718	1	
10	Washer, 1.95" ID X 4" OD X .078"	033735	2	
11	Stud, 3/4-16 X 7 3/4" Threaded	017642	2	
12	Nut, 3/4-16 Hex	F05010-92	6	
13	Chain, 12-Foot Infeed Deck	033760	1	
14	Pin, WR78 Chain Connecting	017643	1	
15	Pin, 5/32" x 1" Cotter	F05012-112	1	
16	CROSS TUBE WELDMENT, INFEED	035767	2	
17	BOLT, 5/8-11 X 1 3/4" HEX HEAD	F05009-33	16	
18	NUT, 5/8-11 HEX LOCK	F05010-4	16	
	RAIL ASSEMBLY, 12-FEET LEFT (LD12-1)	036495 ¹	1	
	RAIL ASSEMBLY, 12-FEET LEFT (LD12)	033711-1	1	
	RAIL ASSEMBLY, 12-FEET LEFT (ORANGE LD12)	033711 ²	1	
19	Tube Weldment, 12-Foot Infeed Deck Main Left (LD12-1)	036496 ¹	1	
	Tube Weldment, 12-Foot Infeed Deck Main Left (LD12)	033704-1	1	
	Tube Weldment, 12-Foot Infeed Deck Main Left (Orange LD12)	033704 ²	1	
20	Bolt, 1/2-13 X 6" Hex Head Grade 5	F05008-107	2	
21	Nut, 1/2-13 Hex Lock	F05010-3	2	
22	Pipe, 1/2" x 4 13/16" Sch 40	035763	2	
23	Channel, UHMW Conveyor	033722	3	
24	Bolt, 1/4-20 x 3/4" Hex Head w/Washer&Patch	F05005-207	15	
	Sprocket Assembly, Idler WR7808	033715 ³	1	
25	Sprocket Weldment, Idler WR7808	036717	1	
26	Bushing, 1 15/16" x 2 5/16" x 3 3/4" Bronze	036708	1	
27	Shaft, Chain Idler	033718	1	
28	Washer, 1.95" ID X 4" OD X .078"	033735	2	
29	Stud, 3/4-16 X 7 3/4" Threaded	017642	2	
30	Nut, 3/4-16 Hex	F05010-92	6	
31	Chain, 12-Foot Infeed Deck	033760	1	
32	Pin, WR78 Chain Connecting	017643	1	
33	Pin, 5/32" x 1" Cotter	F05012-112	1	
34	DECAL, AWMV LOGO 15"	052281	2	
	DECAL, WOOD-MIZER LOGO ORANGE (FOR GRAY LOG DECK)	016992 ⁴	2	
	DECAL, WOOD-MIZER LOGO BLACK (FOR ORANGE LOG DECK)	S12281 ²	2	
35	DECAL, KEEP AWAY DANGER	S09851	2	
36	DECAL, MOVING PARTS DANGER	033254	4	
37	DECAL, REVISION	016187	1	

¹ LD12-1 used for LT300 Rev. A7.00+ to accommodate 8" additional height of LT300.

² Orange Log Deck no longer available after Rev. A2.00.

³ 033715 Idler Sprocket changed from purchased part to manufactured assembly (1/05).

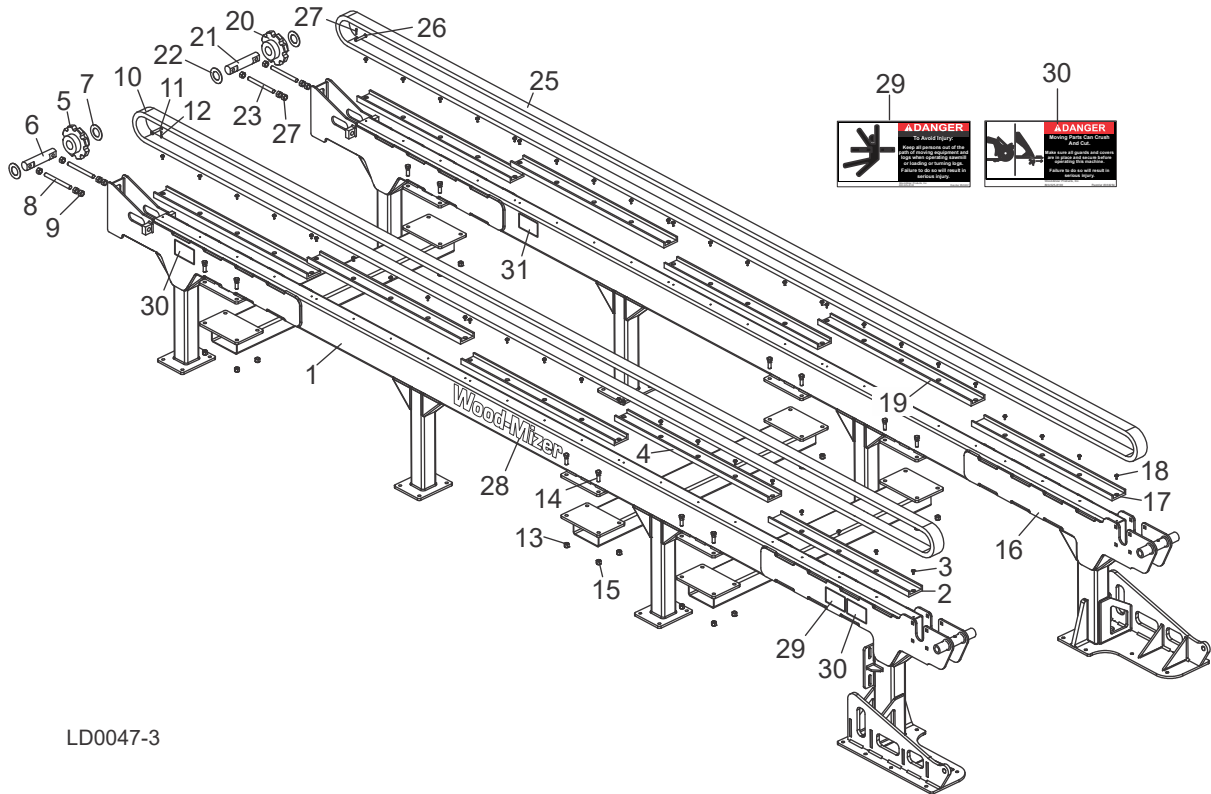
⁴ Color scheme and logo changed to AWMV with Rev. A2.01.

4 Replacement Parts

Rail Assembly, 20-Foot Right & Left

4.4 Rail Assembly, 20-Foot Right & Left

Rev. B2.00+



LD0047-3

REF	DESCRIPTION (◆ Indicates Parts Available In Assemblies Only)	PART #	QTY.
	RAIL ASSEMBLY, 20-FEET RIGHT (LD20-1)	065671	1
	RAIL ASSEMBLY, 20-FEET RIGHT (LD20)	065903	1
1	Tube Weldment, 20-Foot Infeed Deck Main Right (LD20-1)	065666	1
	Tube Weldment, 20-Foot Infeed Deck Main Right (LD20)	065901	1
2	Channel, UHMW Drive End Conveyor	035755	1
3	Bolt, 1/4-20 x 3/4" Hex Head w/Washer&Patch	F05005-207	24
4	Channel, UHMW Conveyor	033722	4
5	Sprocket Assembly, Idler WR7808	033715	1
	Spocket Weldment, Idler WR7808	036717	1
	Bushing, 1 15/16" x 2 5/16" x 3 3/4" Bronze	036708	1
6	Shaft, Chain Idler	033718	1
7	Washer, 1.95" ID X 4" OD X .078"	033735	2
8	Stud, 3/4-16 X 7 3/4" Threaded	017642	2
9	Nut, 3/4-16 Hex	F05010-92	6
10	Chain, 20-Foot Infeed Deck	035762	1
11	Pin, WR78 Chain Connecting	017643	1
12	Pin, 5/32" x 1" Cotter	F05012-112	1

Replacement Parts

Rail Assembly, 20-Foot Right & Left

4

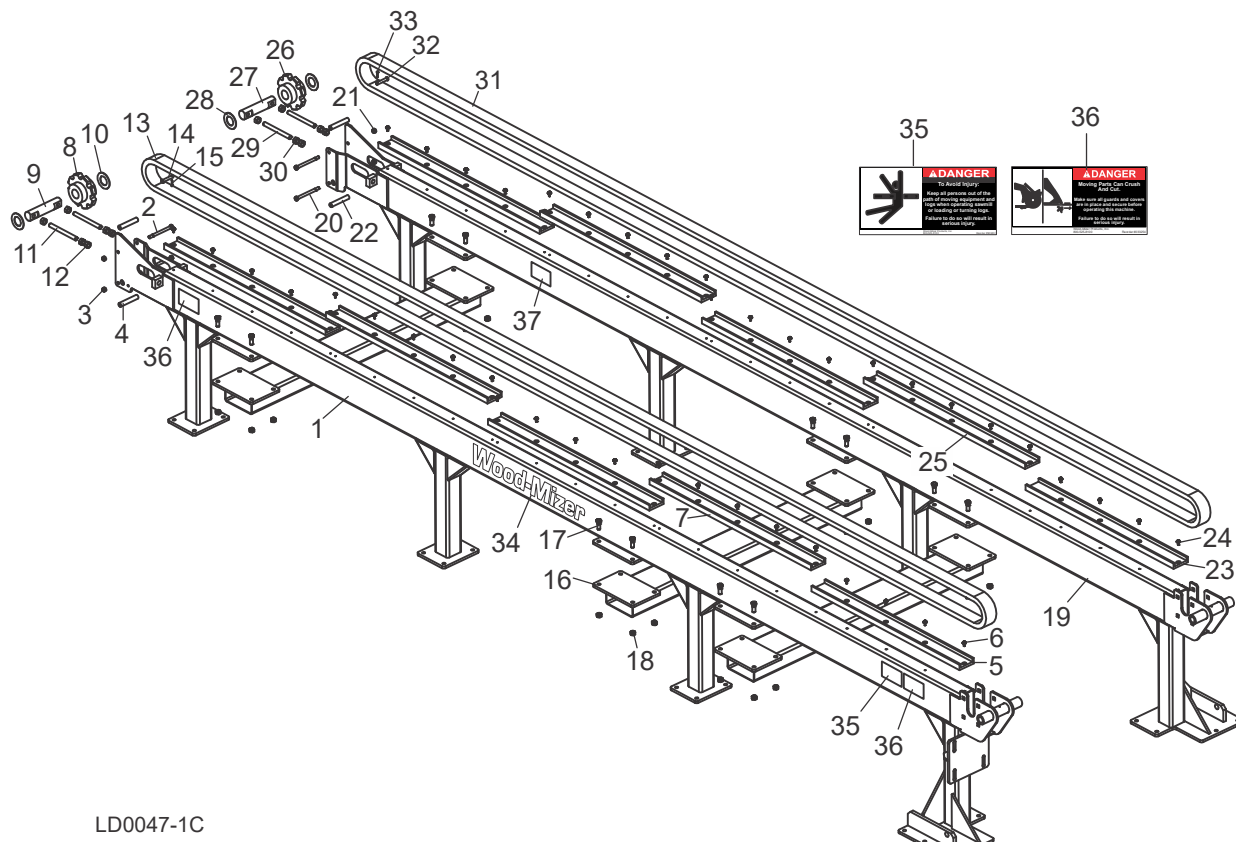
13	CROSS TUBE WELDMENT, INFEED	035767	3	
14	BOLT, 5/8-11 X 1 3/4 HEX HEAD	F05009-33	24	
15	NUT, 5/8-11 HEX LOCK	F05010-4	24	
	RAIL ASSEMBLY, 20-FEET LEFT (LD20-1)	065670	1	
	RAIL ASSEMBLY, 20-FEET LEFT (LD20)	065902	1	
16	Tube Weldment, 20-Feet Infeed Deck Main Left (LD20-1)	065665	1	
	Tube Weldment, 20-Feet Infeed Deck Main Left (LD20)	065900	1	
17	Channel, UHMW Drive End Conveyor	035755	1	
18	Bolt, 1/4-20 x 3/4" Hex Head w/Washer&Patch	F05005-207	24	
19	Channel, UHMW Conveyor	033722	4	
20	Sprocket Assembly, Idler WR7808	033715	1	
	Sprocket Weldment, Idler WR7808	036717	1	
	Bushing, 1 15/16" x 2 5/16" x 3 3/4" Bronze	036708	1	
21	Shaft, Chain Idler	033718	1	
22	Washer, 1.95" ID X 4" OD X .078"	033735	2	
23	Stud, 3/4-16 X 7 3/4" Threaded	017642	2	
24	Nut, 3/4-16 Hex	F05010-92	6	
25	Chain, 20-Foot Infeed Deck	035762	1	
26	Pin, WR78 Chain Connecting	017643	1	
27	Pin, 5/32" x 1" Cotter	F05012-112	1	
28	DECAL, 27" WHITE WOOD-MIZER LOGO	074077	2	
29	DECAL, KEEP AWAY DANGER	S09851	2	
30	DECAL, MOVING PARTS DANGER	033254	4	
31	DECAL, REVISION	016187	1	

4 Replacement Parts

Rail Assembly, 20-Foot Right & Left

4.5 Rail Assembly, 20-Foot Right & Left

Rev. B1.00 - B1.03



LD0047-1C

REF	DESCRIPTION (◆ Indicates Parts Available In Assemblies Only)	PART #	QTY.
	RAIL ASSEMBLY, 20-FEET RIGHT (LD20-1)	065671 ¹	1
	RAIL ASSEMBLY, 20-FEET RIGHT (LD20)	065903	1
1	Tube Weldment, 20-Foot Infeed Deck Main Right (LD20-1)	065666 ¹	1
	Tube Weldment, 20-Foot Infeed Deck Main Right (LD20)	065901	1
2	Bolt, 1/2-13 X 6" Hex Head Grade 5	F05008-107	2
3	Nut, 1/2-13 Hex Lock	F05010-3	2
4	Pipe, 1/2" x 4 13/16" Sch 40	035763	2
5	Channel, UHMW Drive End Conveyor	035755	1
6	Bolt, 1/4-20 x 3/4" Hex Head w/Washer&Patch	F05005-207	24
7	Channel, UHMW Conveyor	033722	4
8	Sprocket Assembly, Idler WR7808	033715	1
	Spocket Weldment, Idler WR7808	036717	1
	Bushing, 1 15/16" x 2 5/16" x 3 3/4" Bronze	036708	1
9	Shaft, Chain Idler	033718	1
10	Washer, 1.95" ID X 4" OD X .078"	033735	2

Replacement Parts 4

Rail Assembly, 20-Foot Right & Left

11	Stud, 3/4-16 X 7 3/4" Threaded	017642	2	
12	Nut, 3/4-16 Hex	F05010-92	6	
13	Chain, 20-Foot Infeed Deck	035762	1	
14	Pin, WR78 Chain Connecting	017643	1	
15	Pin, 5/32" x 1" Cotter	F05012-112	1	
16	CROSS TUBE WELDMENT, INFEED	035767	3	
17	BOLT, 5/8-11 X 1 3/4 HEX HEAD	F05009-33	24	
18	NUT, 5/8-11 HEX LOCK	F05010-4	24	
	RAIL ASSEMBLY, 20-FEET LEFT (LD20-1)	065670 ¹	1	
	RAIL ASSEMBLY, 20-FEET LEFT (LD20)	065902	1	
19	Tube Weldment, 20-Feet Infeed Deck Main Left (LD20-1)	065665	1	
	Tube Weldment, 20-Feet Infeed Deck Main Left (LD20)	065900	1	
20	Bolt, 1/2-13 X 6" Hex Head Grade 5	F05008-107	2	
21	Nut, 1/2-13 Hex Lock	F05010-3	2	
22	Pipe, 1/2" x 4 13/16" Sch 40	035763	2	
23	Channel, UHMW Drive End Conveyor	035755	1	
24	Bolt, 1/4-20 x 3/4" Hex Head w/Washer&Patch	F05005-207	24	
25	Channel, UHMW Conveyor	033722	4	
26	Sprocket Assembly, Idler WR7808	033715	1	
	Spocket Weldment, Idler WR7808	036717	1	
	Bushing, 1 15/16" x 2 5/16" x 3 3/4" Bronze	036708	1	
27	Shaft, Chain Idler	033718	1	
28	Washer, 1.95" ID X 4" OD X .078"	033735	2	
29	Stud, 3/4-16 X 7 3/4" Threaded	017642	2	
30	Nut, 3/4-16 Hex	F05010-92	6	
31	Chain, 20-Foot Infeed Deck	035762	1	
32	Pin, WR78 Chain Connecting	017643	1	
33	Pin, 5/32" x 1" Cotter	F05012-112	1	
34	DECAL, 27" WHITE WOOD-MIZER LOGO	074077	2	
35	DECAL, KEEP AWAY DANGER	S09851	2	
36	DECAL, MOVING PARTS DANGER	033254	4	
37	DECAL, REVISION	016187	1	

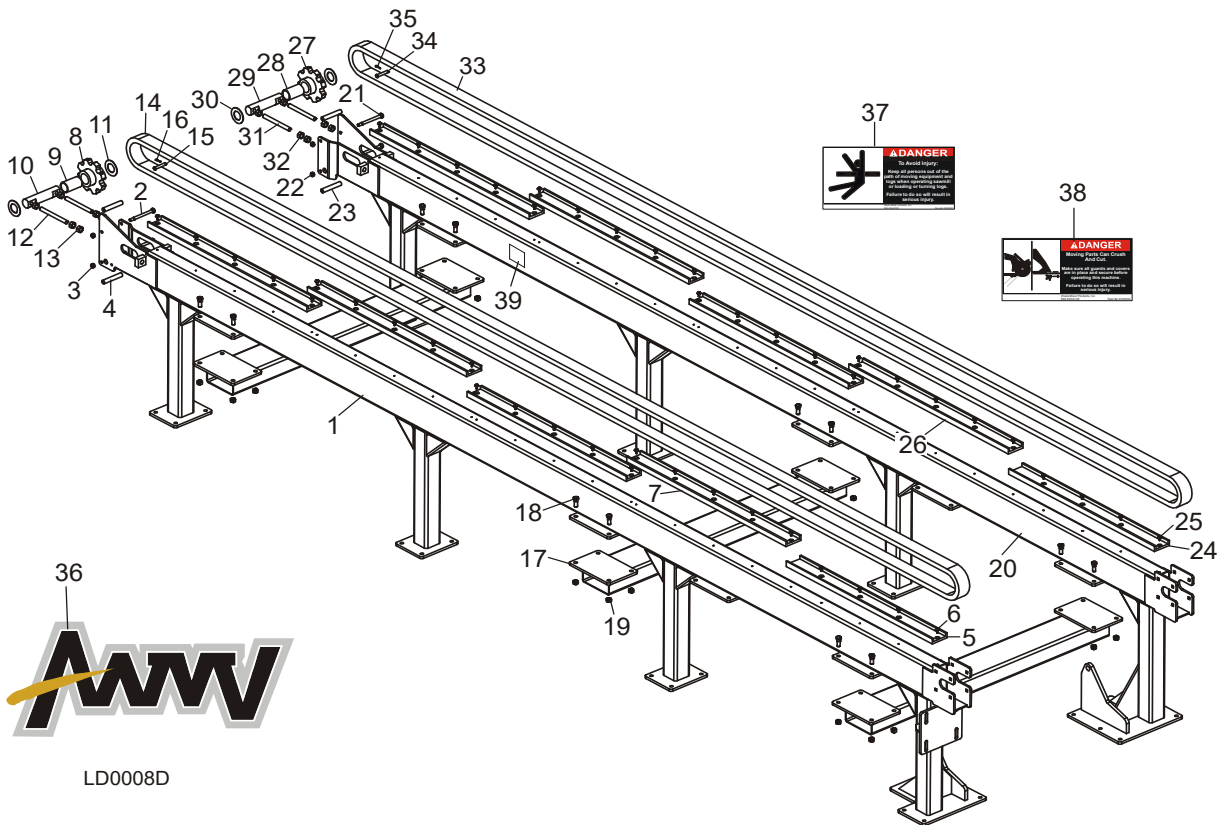
¹ LD20-1 used for LT300 Rev. A7.00+ to accommodate 8" additional height of LT300.

4 Replacement Parts

Rail Assembly, 20-Foot Right & Left

4.6 Rail Assembly, 20-Foot Right & Left

Rev. A1.00 - A2.03



LD0008D

REF	DESCRIPTION (◆ Indicates Parts Available In Assemblies Only)	PART #	QTY.
	RAIL ASSEMBLY, 20-FEET RIGHT (LD20-1)	036548 ¹	1
	RAIL ASSEMBLY, 20-FEET RIGHT (LD20)	035758-1	1
	RAIL ASSEMBLY, 20-FEET RIGHT (ORANGE LD20)	035758 ²	1
1	Tube Weldment, 20-Foot Infeed Deck Main Right (LD20-1)	036546 ¹	1
	Tube Weldment, 20-Foot Infeed Deck Main Right (LD20)	035760-1	1
	Tube Weldment, 20-Foot Infeed Deck Main Right (Orange LD20)	035760 ²	1
2	Bolt, 1/2-13 X 6" Hex Head Grade 5	F05008-107	2
3	Nut, 1/2-13 Hex Lock	F05010-3	2
4	Pipe, 1/2" x 4 13/16" Sch 40	035763	2
5	Channel, UHMW Drive End Conveyor	035755	1
6	Bolt, 1/4-20 x 3/4" Hex Head w/Washer&Patch	F05005-207	24
7	Channel, UHMW Conveyor	033722	4
	Sprocket Assembly, Idler WR7808	033715 ³	1
8	Sprocket Weldment, Idler WR7808	036717	1
9	Bushing, 1 15/16" x 2 5/16" x 3 3/4" Bronze	036708	1

Replacement Parts 4

Rail Assembly, 20-Foot Right & Left

10	Shaft, Chain Idler	033718	1	
11	Washer, 1.95" ID X 4" OD X .078"	033735	2	
12	Stud, 3/4-16 X 7 3/4" Threaded	017642	2	
13	Nut, 3/4-16 Hex	F05010-92	6	
14	Chain, 20-Foot Infeed Deck	035762	1	
15	Pin, WR78 Chain Connecting	017643	1	
16	Pin, 5/32" x 1" Cotter	F05012-112	1	
17	CROSS TUBE WELDMENT, INFEED	035767	3	
18	BOLT, 5/8-11 X 1 3/4 HEX HEAD	F05009-33	24	
19	NUT, 5/8-11 HEX LOCK	F05010-4	24	
	RAIL ASSEMBLY, 20-FEET LEFT (LD20-1)	036547 ¹	1	
	RAIL ASSEMBLY, 20-FEET LEFT (LD20)	035757-1	1	
	RAIL ASSEMBLY, 20-FEET LEFT (ORANGE LD20)	035757 ²	1	
20	Tube Weldment, 20-Feet Infeed Deck Main Left (LD20-1)	036545 ¹	1	
	Tube Weldment, 20-Feet Infeed Deck Main Left (LD20)	035759-1	1	
	Tube Weldment, 20-Feet Infeed Deck Main Left (Orange LD20)	035759 ²	1	
21	Bolt, 1/2-13 X 6" Hex Head Grade 5	F05008-107	2	
22	Nut, 1/2-13 Hex Lock	F05010-3	2	
23	Pipe, 1/2" x 4 13/16" Sch 40	035763	2	
24	Channel, UHMW Drive End Conveyor	035755	1	
25	Bolt, 1/4-20 x 3/4" Hex Head w/Washer&Patch	F05005-207	24	
26	Channel, UHMW Conveyor	033722	4	
	Sprocket Assembly, Idler WR7808	033715 ³	1	
27	Sprocket Weldment, Idler WR7808	036717	1	
28	Bushing, 1 15/16" x 2 5/16" x 3 3/4" Bronze	036708	1	
29	Shaft, Chain Idler	033718	1	
30	Washer, 1.95" ID X 4" OD X .078"	033735	2	
31	Stud, 3/4-16 X 7 3/4" Threaded	017642	2	
32	Nut, 3/4-16 Hex	F05010-92	6	
33	Chain, 20-Foot Infeed Deck	035762	1	
34	Pin, WR78 Chain Connecting	017643	1	
35	Pin, 5/32" x 1" Cotter	F05012-112	1	
36	DECAL, AWMV LOGO 15"	052281	2	
	DECAL, WOOD-MIZER LOGO ORANGE (FOR GRAY LOG DECK)	016992 ⁴	2	
	DECAL, WOOD-MIZER LOGO BLACK (FOR ORANGE LOG DECK)	S12281 ²	2	
37	DECAL, KEEP AWAY DANGER	S09851	2	
38	DECAL, MOVING PARTS DANGER	033254	4	
39	DECAL, REVISION	016187	1	

¹ LD20-1 used for LT300 Rev. A7.00+ to accommodate 8" additional height of LT300.

² Orange Log Deck no longer available after Rev. A2.00.

³ 033715 Idler Sprocket changed from purchased part to manufactured assembly (1/05).

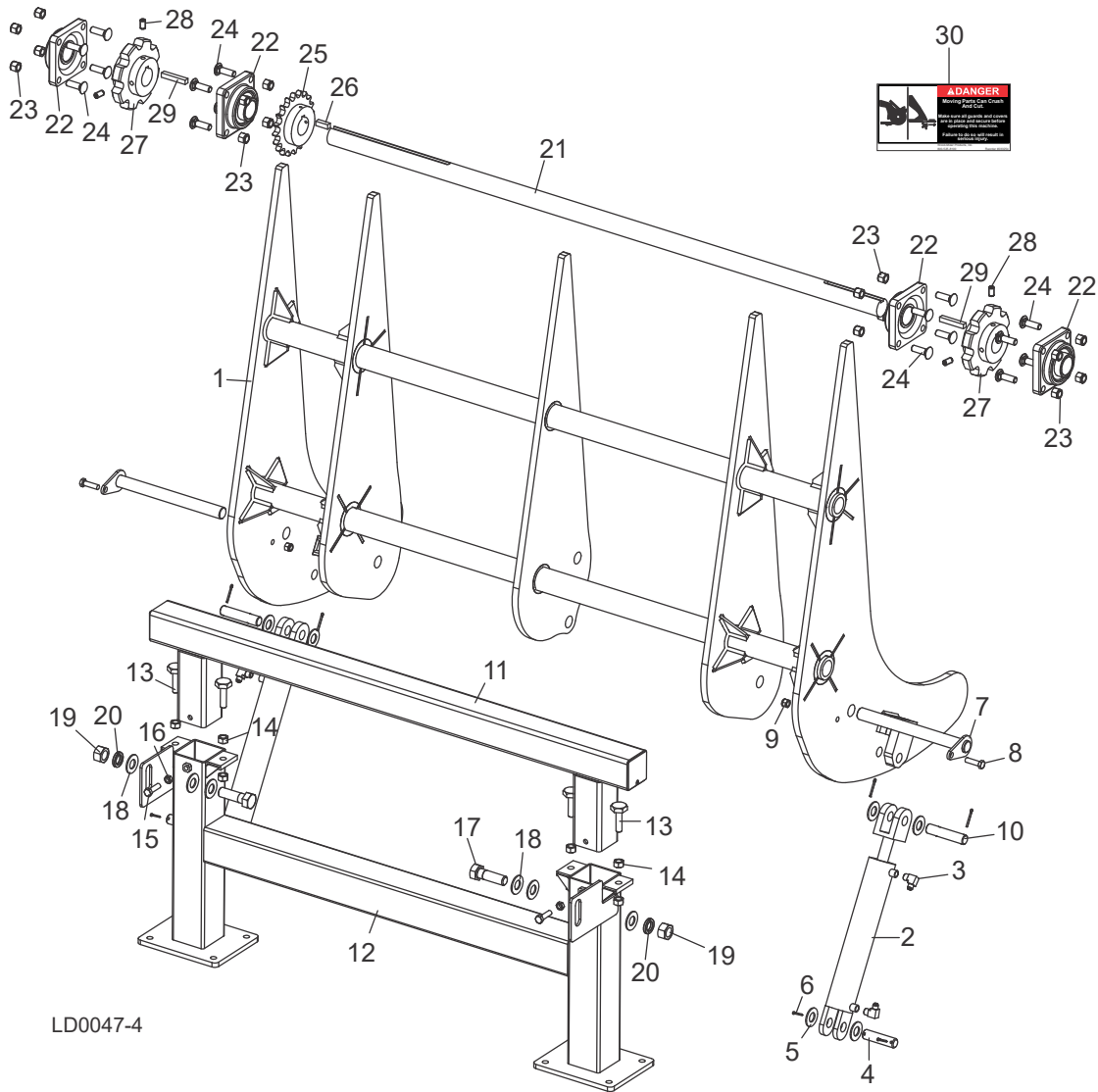
⁴ Color scheme and logo changed to AWMV with Rev. A2.01.

4 Replacement Parts

Stop/Loader Assembly

4.7 Stop/Loader Assembly

Rev. B2.00+



LD0047-4

REF	DESCRIPTION (◆ Indicates Parts Available In Assemblies Only)	PART #	QTY.
	ARM ASSEMBLY, LOG UNLOADING 2-STRAND	104208	1
1	Arm Weldment, 2-Strand Log Loading	104249	1
2	Cylinder, 2 1/2" X 22 1/4" Rod End Welded	050105	2
	Seal Kit, 2 1/2x8 Hydraulic Cylinder	P12955	1
3	Fitting, 3/8" NPT-3/8" JIC 90° Elbow	016820	4
4	Pin, 1" X 3.88"	S09251	2
5	Washer, 1" ID SAE Flat	F05011-28	8
6	Pin, 3/16" X 1 1/2" Cotter	F05012-23	8

7	Pin Weldment, 1-1/4" x 13" Pivot	062805	2	
8	Bolt, 1/2-13 x 1 3/4" Hex Head Grade 5 Full Thread	F05008-88	2	
9	Nut, 1/2-13 Nylon Hex Lock	F05010-8	2	
10	Pin, 1" x 4-5/8" Pivot	065885	2	
	STOP ASSEMBLY, LOADER (LD12-1/LD20-1)	036543 ¹	1	
	STOP ASSEMBLY, LOADER (LD12/LD20)	033773-1	1	
11	Weldment, Rail Top Rest	050112	1	
12	Stop Weldment, Loader (LD12-1/LD20-1)	036542 ¹	1	
	Stop Weldment, Loader (LD12/LD20)	033772-1	1	
13	Bolt, Bed Rail Adjust LT50	S13006	4	
14	Nut, 5/8-11 Hex	F05010-5	8	
15	Bolt, 1/2-20 X 1 3/4" Hex Head Full Thread	F05008-127	2	
16	Nut, 1/2-20 Hex Jam	F05010-16	2	
17	Bolt, 1-8 X 3 1/4" Hex Head Grade 5	F05009-51	2	
18	Washer, 1" ID SAE Flat	F05011-28	6	
19	Nut, 1-8 Hex	F05010-94	2	
20	Washer, 1" Split Lock	F05011-53	2	
	SHAFT ASSEMBLY, LOG DECK DRIVE	065915	1	
21	Shaft, Jack 1-15/16" x 69-1/4"	065883	1	
22	Bearing, 1 15/16" 4-Bolt Flange	033712	4	
23	Nut, 5/8-11 Nylon Lock	F05010-34	16	
24	Bolt, 5/8-11 x 2" Grade 5 Carriage	F05009-116	16	
25	Sprocket, 80B20 x 1 15/16"	065783	1	
26	Key, 1/2" Square x 1 1/2"	033738	1	
	Sprocket Assembly, Drive WR7808	033716	2	
27	Sprocket Weldment, Drive WR7808	036718	1	
28	Screw, 1/2-13 x 1" OP Nyl Insert Socket Set	F05008-9	2	
29	Key, 1/2" x 1/2" x 3"	S12249	2	
30	DECAL, MOVING PARTS DANGER	033254	1	

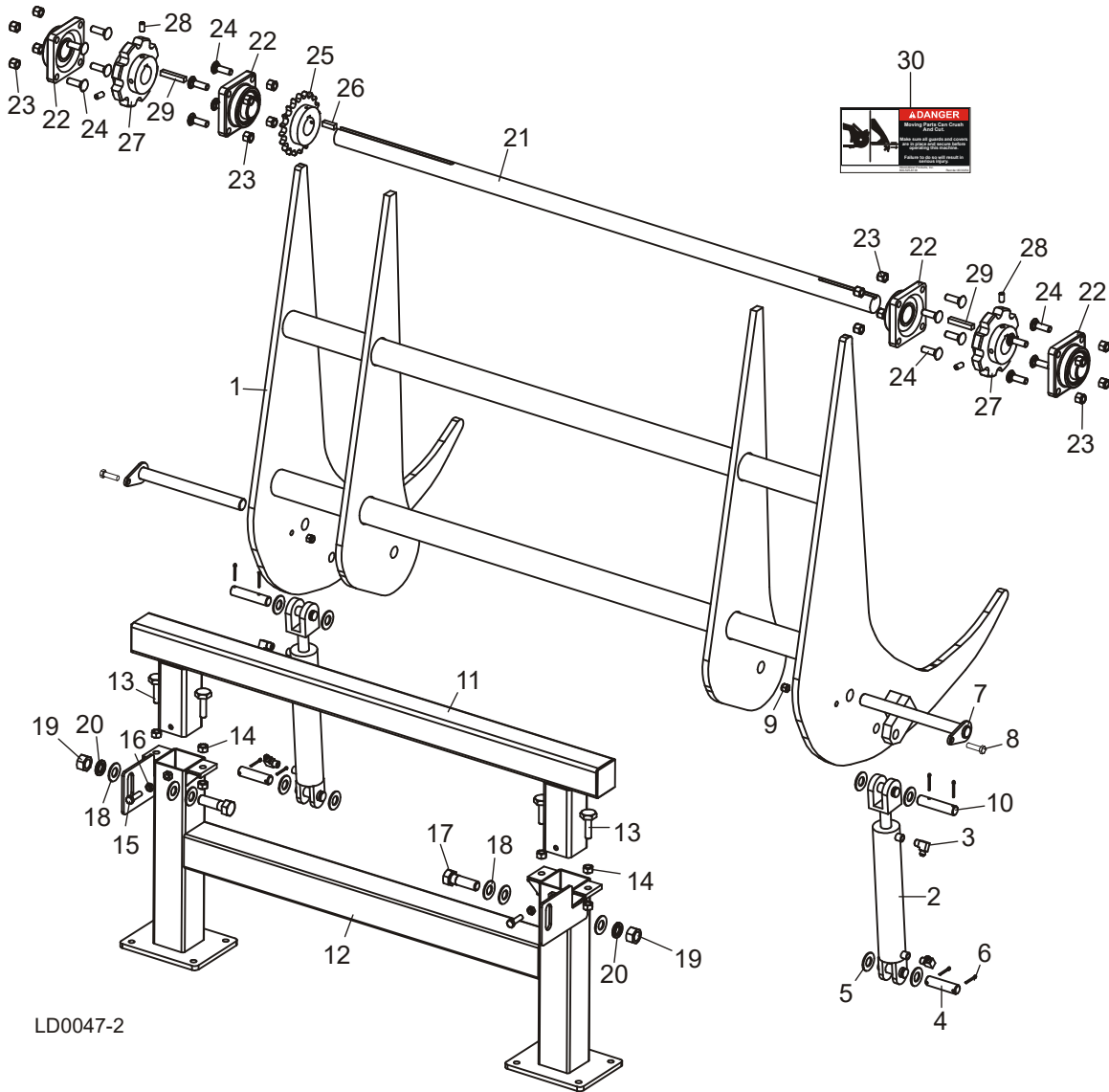
¹ LD12-1 used for LT300 Rev. A7.00+ to accommodate 8" additional height of LT300.

4 Replacement Parts

Stop/Loader Assembly

4.8 Stop/Loader Assembly

Rev. B1.00 - B1.03



LD0047-2

REF	DESCRIPTION (◆ Indicates Parts Available In Assemblies Only)	PART #	QTY.
	ARM ASSEMBLY, LOG UNLOADING 2-STRAND	065916	1
1	Arm Weldment, 2-Strand Log Loading	065879	1
2	Cylinder, 2 1/2" X 22 1/4" Rod End Welded	050105	2
	Seal Kit, 2 1/2x8 Hydraulic Cylinder	P12955	1
3	Fitting, 3/8" NPT-3/8" JIC 90° Elbow	016820	4
4	Pin, 1" X 3.88"	S09251	2
5	Washer, 1" ID SAE Flat	F05011-28	8
6	Pin, 3/16" X 1 1/2" Cotter	F05012-23	8

7	Pin Weldment, 1-1/4" x 13" Pivot	062805	2	
8	Bolt, 1/2-13 x 1 3/4" Hex Head Grade 5 Full Thread	F05008-88	2	
9	Nut, 1/2-13 Nylon Hex Lock	F05010-8	2	
10	Pin, 1" x 4-5/8" Pivot	065885	2	
	STOP ASSEMBLY, LOADER (LD12-1/LD20-1)	036543 ¹	1	
	STOP ASSEMBLY, LOADER (LD12/LD20)	033773-1	1	
11	Weldment, Rail Top Rest	050112	1	
12	Stop Weldment, Loader (LD12-1/LD20-1)	036542 ¹	1	
	Stop Weldment, Loader (LD12/LD20)	033772-1	1	
13	Bolt, Bed Rail Adjust LT50	S13006	4	
14	Nut, 5/8-11 Hex	F05010-5	8	
15	Bolt, 1/2-20 X 1 3/4" Hex Head Full Thread	F05008-127	2	
16	Nut, 1/2-20 Hex Jam	F05010-16	2	
17	Bolt, 1-8 X 3 1/4" Hex Head Grade 5	F05009-51	2	
18	Washer, 1" ID SAE Flat	F05011-28	6	
19	Nut, 1-8 Hex	F05010-94	2	
20	Washer, 1" Split Lock	F05011-53	2	
	SHAFT ASSEMBLY, LOG DECK DRIVE	065915	1	
21	Shaft, Jack 1-15/16" x 69-1/4"	065883	1	
22	Bearing, 1 15/16" 4-Bolt Flange	033712	4	
23	Nut, 5/8-11 Nylon Lock	F05010-34	16	
24	Bolt, 5/8-11 x 2" Grade 5 Carriage	F05009-116	16	
25	Sprocket, 80B20 x 1 15/16"	065783	1	
26	Key, 1/2" Square x 1 1/2"	033738	1	
	Sprocket Assembly, Drive WR7808	033716	2	
27	Sprocket Weldment, Drive WR7808	036718	1	
28	Screw, 1/2-13 x 1" OP Nyl Insert Socket Set	F05008-9	2	
29	Key, 1/2" x 1/2" x 3"	S12249	2	
30	DECAL, MOVING PARTS DANGER	033254	1	

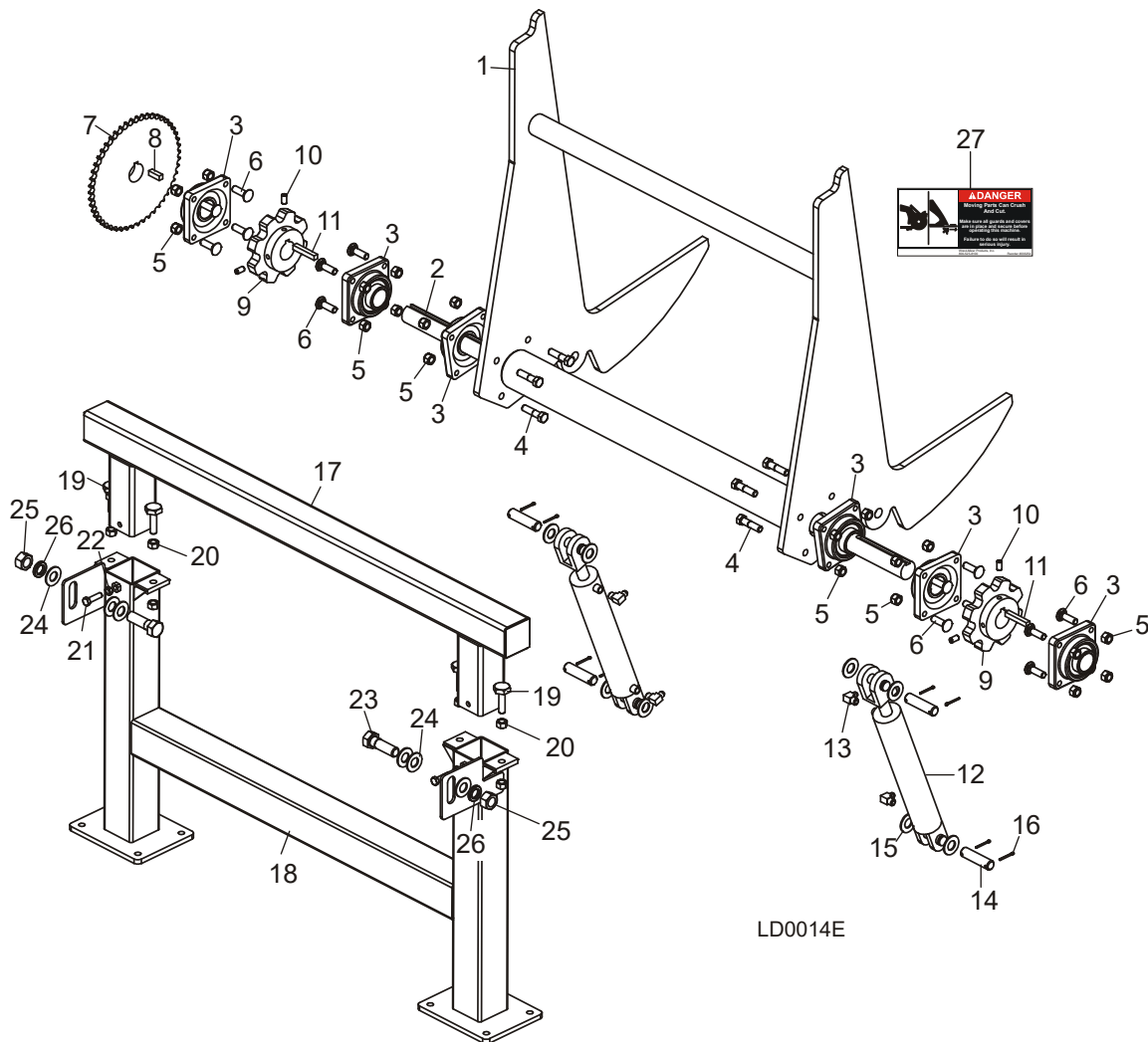
¹ LD12-1 used for LT300 Rev. A7.00+ to accommodate 8" additional height of LT300.

4 Replacement Parts

Stop/Loader Assembly

4.9 Stop/Loader Assembly

Rev. A1.00 - A2.03



REF	DESCRIPTION (◆ Indicates Parts Available In Assemblies Only)	PART #	QTY.
	SHAFT ASSEMBLY, STOP/LOADER (LD12-1/LD20-1)	036544 ¹	1
	SHAFT ASSEMBLY, STOP/LOADER (LD12/LD20)	033751-1	1
	SHAFT ASSEMBLY, STOP/LOADER (ORANGE LD12/LD20)	033751 ²	1
1	Shaft Weldment, Stop/Loader	033753	1
2	Shaft, Jack	033733	1
3	Bearing, 1 15/16" 4-Bolt Flange	033712	6
4	Bolt, 5/8-11 X 2 1/2" Hex Head Grade 5	F05009-20 ³	8
5	Nut, 5/8-11 Nylon Lock	F05010-34 ³	24
6	Bolt, 5/8-11 X 2" Carriage Head	F05009-116 ³	16

7	Sprocket, 60B50	050103	1	
8	Key, 1/2" Square X 1 1/2"	033738	1	
	Sprocket Assembly, WR7808	033716 ⁴	2	
9	Sprocket Weldment, Idler	036718	1	
10	Screw, 1/2-13 x 3/4" Flat Point Nylock Socket Set	F05008-9	2	
11	Key, 1/2" Square X 3"	S12249	2	
12	Cylinder, 2 1/2" X 22 1/4" Rod End Welded	050105	2	
13	Fitting, 3/8" NPT-3/8" JIC 90° Elbow	016820	4	
14	Pin, 1" X 3.88"	S09251	4	
15	Washer, 1" ID SAE Flat	F05011-28	8	
16	Pin, 3/16" X 1 1/2" Cotter	F05012-23	8	
	Stop Assembly, Loader (LD12-1/LD20-1)	036543 ¹	1	
	Stop Assembly, Loader (LD12/LD20)	033773-1	1	
	Stop Assembly, Loader (Orange LD12/LD20)	033773 ²	1	
17	Weldment, Rail Top Rest	050112	1	
18	Stop Weldment, Loader (LD12-1/LD20-1)	036542 ¹	1	
	Stop Weldment, Loader (LD12/LD20)	033772-1	1	
	Stop Weldment, Loader (Orange LD12/LD20)	033772 ²	1	
19	Bolt, Bed Rail Adjust LT50	S13006	4	
20	Nut, 5/8-11 Hex	F05010-5	8	
21	Bolt, 1/2-20 X 1 3/4" Hex Head Full Thread	F05008-127	2	
22	Nut, 1/2-20 Hex Jam	F05010-16	2	
23	Bolt, 1-8 X 3 1/4" Hex Head Grade 5	F05009-51	2	
24	Washer, 1" ID SAE Flat	F05011-28	6	
25	Nut, 1-8 Hex	F05010-94 ⁵	2	
26	Washer, 1" Split Lock	F05011-53 ⁵	2	
27	DECAL, MOVING PARTS DANGER	033254	1	

¹ LD12-1 used for LT300 Rev. A7.00+ to accommodate 8" additional height of LT300.

² Orange Log Deck no longer available after Rev. A2.00.

³ Replaced Hex Head Bolt F05008-10 with F05009-20, Nylon Lock Nut F05010-8 with F05010-34, Carriage Head Bolt F05008-132 with F05009-116 for Log Deck Rev. A2.03 to eliminate mounting hardware failure.

⁴ 033716 Sprocket changed from purchased part to manufactured assembly (1/05).

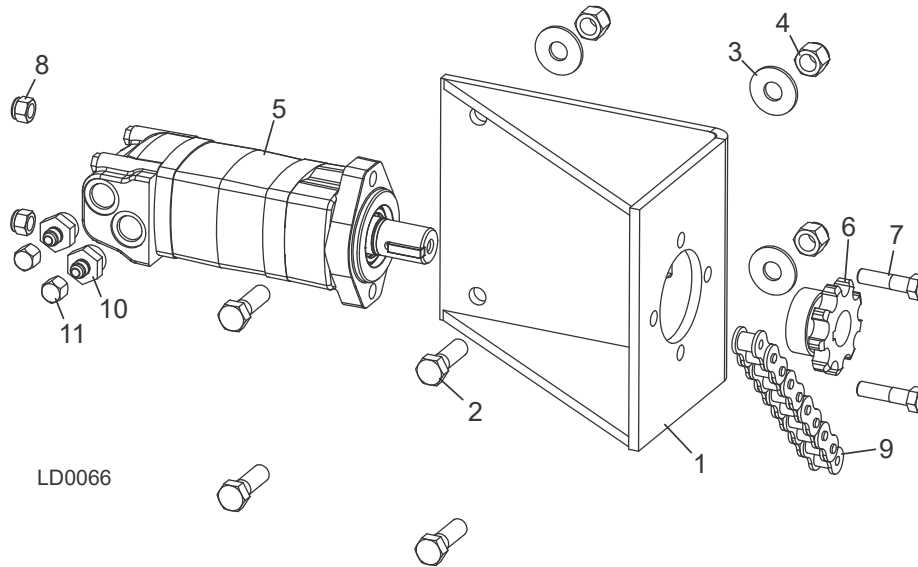
⁵ Hex Nut F05010-94 and Lock Washer F05011-53 replace Nylon Lock Nut F05010-109 originally supplied before 1/05 for easier assembly.

4 Replacement Parts

Drive Hydraulic Assembly

4.10 Drive Hydraulic Assembly

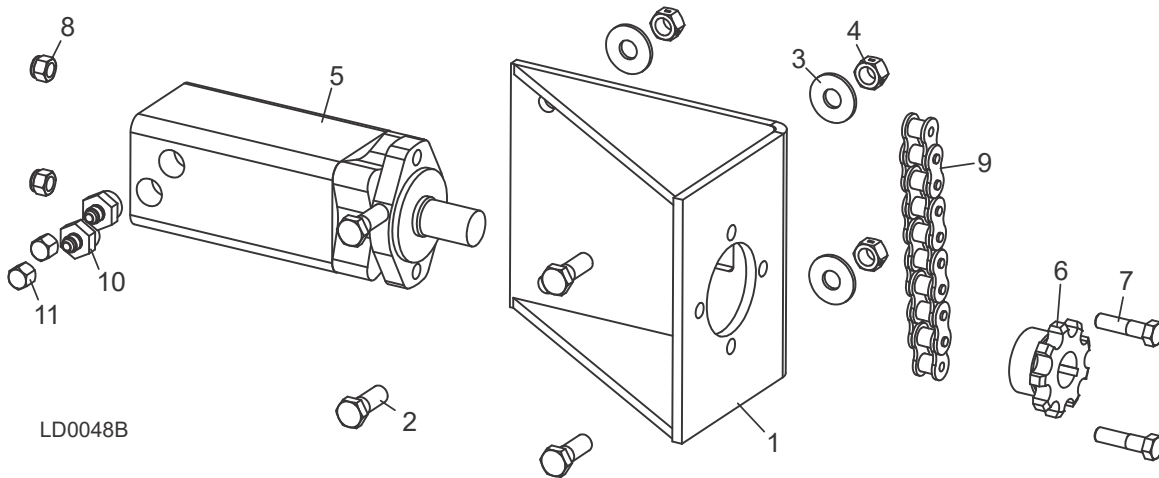
Rev. B2.00+



REF	DESCRIPTION (◆ Indicates Parts Available In Assemblies Only)	PART #	QTY.
	DRIVE ASSEMBLY, HYDRAULIC LOG DECK	110218	1
1	Bracket Weldment, Motor Mount	050101	1
2	Bolt, 5/8-11x2 Hex Head Grade 2	F05009-2	4
3	Washer, 5/8" Standard Flat	F05011-40	4
4	Nut, 5/8-11 Nyl Lock	F05010-34	4
5	Motor, Hydraulic Log Deck	056062	1
	Key, 5/16" x 1-1/4"	074805	1
	Kit, Seal CX30339 for 056062 Motor	061342	1
6	Sprocket, 80B9 x 1.25 5/16" Key	074791	1
7	Bolt, 1/2-13 X 2" Hex Head Grade 5	F05008-102	2
8	Nut, 1/2-13 Nylon Hex Lock	F05010-8	2
9	Chain, #80 61 Pitches+Con Link	104686	1
10	Fitting, #10 SAE x 3/8" JIC	017640	2
11	Fitting, 3/8" JIC Female Cap	016816	2

4.11 Drive Hydraulic Assembly

Rev. B1.00 - B1.03



REF	DESCRIPTION (◆ Indicates Parts Available In Assemblies Only)	PART #	QTY.
	DRIVE ASSEMBLY, HYDRAULIC LOG DECK	065678	1
1	Bracket Weldment, Motor Mount	050101	1
2	Bolt, 5/8-11 X 1 3/4" Hex Head	F05009-33	4
3	Washer, 5/8" Standard Flat	F05011-40	4
4	Nut, 5/8-11 Hex Lock	F05010-4	4
5	Motor, Hydraulic Log Deck	056062	1
	Key, 5/16" x 1-1/4"	074805	1
	Kit, Seal CX30339 for 056062 Motor	061342	1
6	Sprocket, 80B9 x 1.25 5/16" Key	074791 ¹	1
7	Bolt, 1/2-13 X 2" Hex Head Grade 5	F05008-102	2
8	Nut, 1/2-13 Nylon Hex Lock	F05010-8	2
9	Chain, #80 x 39 Link Roller	065884	1
10	Fitting, #10 SAE x 3/8" JIC	017640	2
11	Fitting, 3/8" JIC Female Cap	016816	2

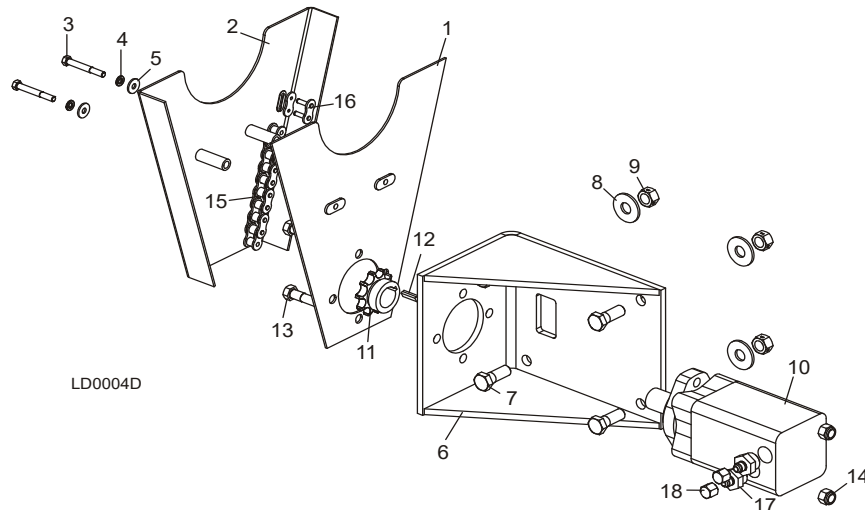
¹ Replaced 058090 80B9 x 1.25 1/4" Key Sprocket equipped with 017830 5/16" x 1/4" Stepped x 31/32" Long Key (Rev. B1.03).

4 Replacement Parts

Drive Hydraulic Assembly

4.12 Drive Hydraulic Assembly

Rev. A1.00 - A2.03



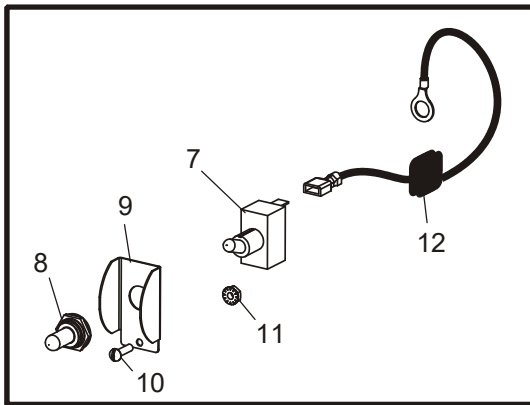
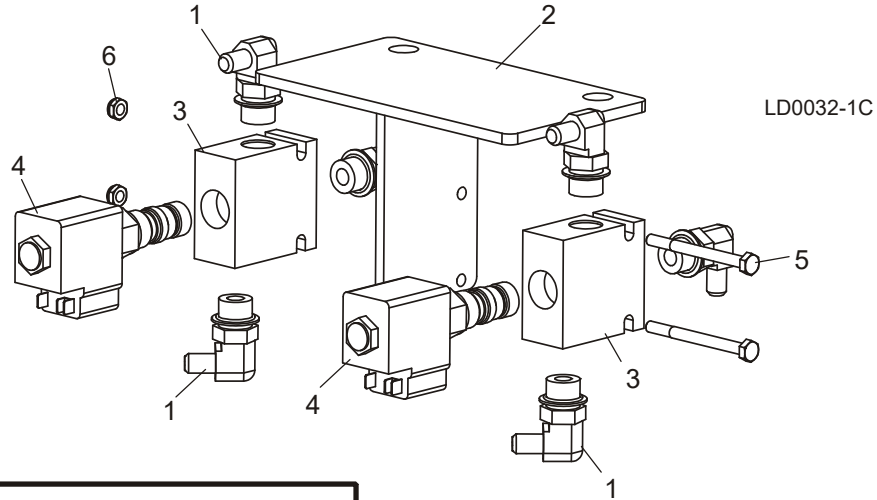
REF	DESCRIPTION (◆ Indicates Parts Available In Assemblies Only)	PART #	QTY.	
	DRIVE ASSEMBLY, HYDRAULIC LOG DECK	050102	1	
1	Weldment, Chain Guard	050121 ¹	1	
2	Weldment, Chain Guard Cover	050120	1	
3	Bolt, 5/16-18 X 2 1/2" Hex Head	F05006-10	2	
4	Washer, 5/16" Split Lock	F05011-13	2	
5	Washer, 5/16" Standard Flat	F05011-16	2	
6	Bracket Weldment, Motor Mount	050101	1	
7	Bolt, 5/8-11 X 1 3/4" Hex Head	F05009-33	4	
8	Washer, 5/8" Standard Flat	F05011-40	4	
9	Nut, 5/8-11 Hex Lock	F05010-4	4	
10	Motor, Hydraulic Log Deck	050100 ¹	1	
	Sprocket Assembly, Log Deck Drive w/Key	050115 ²	1	
11	Sprocket, 60B10 x 1.25" Bore	017644	1	◆
12	Key, 5/16" x 1/4" Stepped x 31/32" Long	017830	1	
13	Bolt, 1/2-13 X 2" Hex Head Grade 5	F05008-102	2	
14	Nut, 1/2-13 Nylon Hex Lock	F05010-8	2	
15	Chain, #60 x 49 1/2"	017641	1	
16	Link, #60 CL	042398	1	
17	Fitting, #10 SAE x 3/8" JIC	017640 ³	2	
18	Fitting, 3/8" JIC Female Cap	016816 ³	2	

¹ 4-hole mount motor discontinued by vendor. Motor 050100 changed to two-hole mount, requiring change to guard weldment 050121 (Rev. A2.02). All parts are interchangeable with previous revisions.

² Sprocket changed to assembly with stepped key to eliminate broaching operation (Rev. A1.02).

³ Fittings moved from Installation Kits to Drive Assembly 1/05.

4.13 Installation Kit (All Supers & LT60HD/70HD non-Remote)



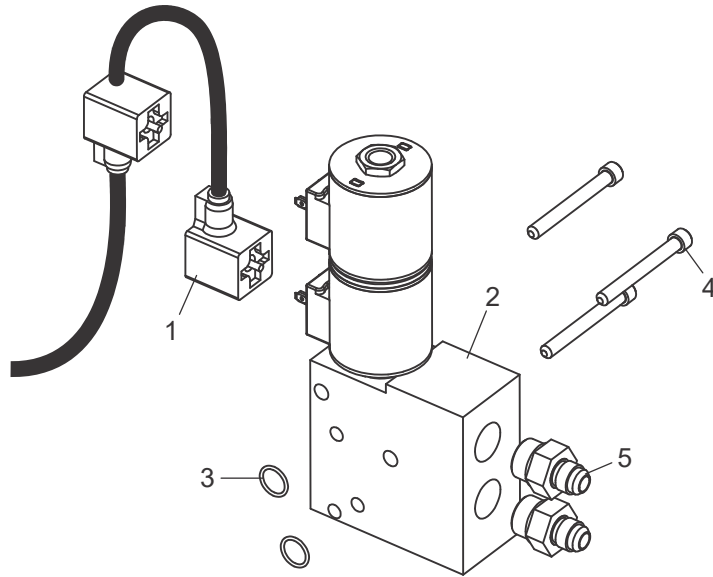
REF	DESCRIPTION (◆ Indicates Parts Available In Assemblies Only)	PART #	QTY.
	INSTALLATION KIT, LD70/40 LOG DECK	LD70/40KIT	1
	Hose, 3/8" Hydraulic w/Fittings CS 24" Long HP	074182	2
	Hose, 3/8" Hydraulic w/Fittings 84" HP	013994	4
	Hose, 3/8" Hydraulic w/Fittings CS 72" Long HP	074184	2
	Fitting, 3/8" JIC Union Small Hex	016540	2
1	Fitting, #8 SAE x 3/8" JIC Elbow	015907	6
2	Bracket Weldment, Hydraulic Valve Mount	045866	1
3	Valve Body, #8 SAE 3-Port	045863	2
4	Valve, Diverter Cartridge	045865	2
5	Bolt, 1/4-20 x 3 1/2" Hex Head Grade 5	F05006-56	2
6	Nut, 1/4-20 Nylon Lock	F05010-69	2
	Fitting, 3/8" NPT x 3/8" JIC Male Run T	045864	2
	Electrical Kit, LD70/40 Log Deck	050991	1
7	Switch, 15A SPST .25 Tab Toggle	P03027	1
8	Boot, Toggle Switch Sealing	024589	1

4**Replacement Parts***Installation Kit (All Supers & LT60HD/70HD non-Remote)*

9	Guard, Toggle Switch	019612	1	
10	Screw, #6-32 x 1/2" Slotted Round Head	F05015-24	1	
11	Nut, #6-32 Self-Locking Hex	F05010-59	1	
12	Fuseholder Assembly, LD70/40 4A	051255	1	
	Fuse, 4A ATO Blade	024150-4	1	
	Connector, 3-Wire Waterproof 22-14AWG Pigtail	051259	2	
	Cable Assembly, LD 70/40 Main	051253	1	
	Cable Assembly, LD 70/40 Command Control	051254	1	
	Tie Wrap, 5/16" x 15" UV Black	F05089-5	11	
	Tie Wrap, 3/16" x 10" UV Black	F05089-8	5	
	Plate, Log Deck Adaptor	045818	2	

4.14 Installation Kit (LT70HD Super)

For LT70HD Super Rev. A1.00+



LD0063-3

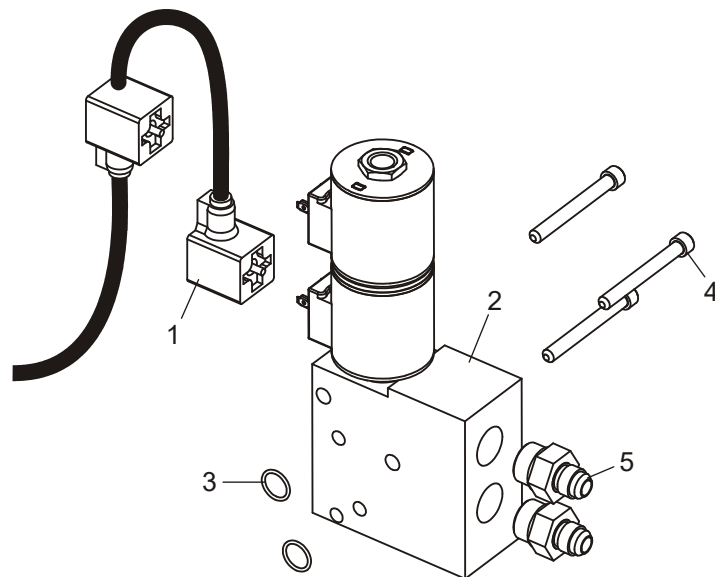
REF	DESCRIPTION (◆ Indicates Parts Available In Assemblies Only)	PART #	QTY.
	INSTALLATION KIT, LT70 SUPER LOG DECK	LD70-SUPERKIT	1
	Hose Kit, Log Deck LD70-RKIT2	074877	1
	Hose, 3/8" Hydraulic w/2 Straight Fittings 72" Long (Cylinder-Loader)	042828	4
	Hose, 3/8" Hydraulic w/1 Straight-1 Elbow Fittings 144" Long (Valve-Hydraulic Motor)	042828	2
	Fitting, 3/8" JIC Union Small Hex	016540	4
1	Cable Assembly, LT70 Hydraulic Log Deck Solenoid	078110	1
	Valve Assembly, LT70 Log Deck	036805	1
2	Valve, 4-Way Closed 12V Hydraulic Add-on	025826	1
3	O-Ring, 1/16" Dia. x 5/8" OD	036806	2
4	Screw, 1/4-20 x 2 1/4" Socket Head	F05005-170	3
5	Fitting, #8 SAE x #6 JIC	P12703	2
	Plate, Log Deck Adaptor	045818	2
	Fluid, Univis HVI 26 Gallon Hydraulic	074744	1
	Manual, Log Infeed Option	M1024	1

4 Replacement Parts

Installation Kit (LT70HD DCS)

4.15 Installation Kit (LT70HD DCS)

For LT70HD DCS Rev. B4.02+



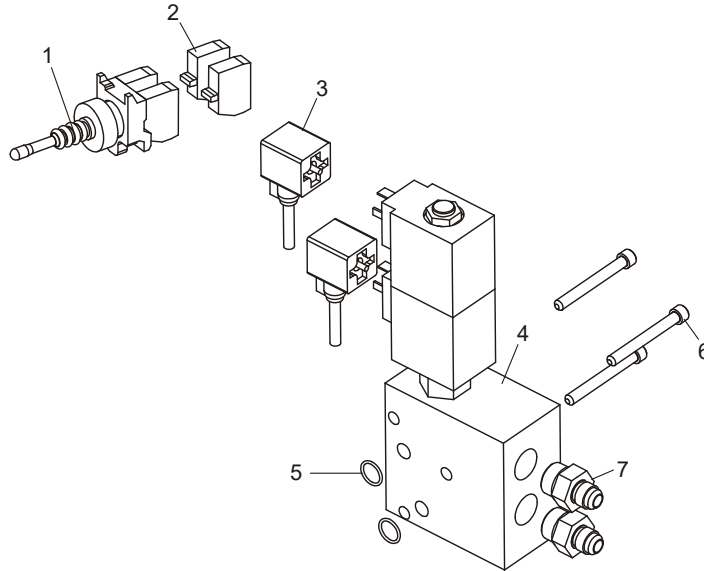
LD0044-3B

REF	DESCRIPTION (◆ Indicates Parts Available In Assemblies Only)	PART #	QTY.
	INSTALLATION KIT, LT70 DCS LOG DECK	LD70-DCSKIT	1
	Hose Kit, Log Deck LD70-RKIT2	074877	1
	Hose, 3/8" Hydraulic w/2 Straight Fittings 72" Long (Cylinder-Loader)	042828	4
	Hose, 3/8" Hydraulic w/1 Straight-1 Elbow Fittings 144" Long (Valve-Hydraulic Motor)	042828	2
	Fitting, 3/8" JIC Union Small Hex	016540	4
1	Cable Assembly, Dual DIN A Valve DCS	069626	1
	Valve Assembly, LT70 Log Deck	036805	1
2	Valve, 4-Way Closed 12V Hydraulic Add-on	025826 ¹	1
3	O-Ring, 1/16" Dia. x 5/8" OD	036806	2
4	Screw, 1/4-20 x 2 1/4" Socket Head	F05005-170	3
5	Fitting, #8 SAE x #6 JIC	P12703	2
	Plate, Log Deck Adaptor	045818	2
	Fluid, Hydraulic HVI32 (Gal) All Weather	006397	1
	Manual, Log Infeed Option	M1024	1

¹ Replaces 036732 originally supplied prior to 12/10 (new vendor).

4.16 Installation Kit (LT70HD Remote)

For LT70HD Remote Rev. A6.00 - B4.04



LD0039-2B

REF	DESCRIPTION (◆ Indicates Parts Available In Assemblies Only)	PART #	QTY.
	INSTALLATION KIT, LT70-R LOG DECK (REV. A6.00+)	LD70-RKIT2 ¹	1
	Hose Kit, Log Deck LD70-RKIT2	074877	1
	Hose, 3/8" Hydraulic w/2 Straight Fittings 72" Long (Cylinder-Loader)	042828	4
	Hose, 3/8" Hydraulic w/1 Straight-1 Elbow Fittings 144" Long (Valve-Hydraulic Motor)	042828	2
	Fitting, 3/8" JIC Union Small Hex	016540	4
	Electrical Kit, LT70-R Log Deck	050966	1
1	Switch, Joystick w/2 NO Contacts	050766	1
2	Contact, NO ZD4 PA103	052075	2
3	Plug Assembly, 2-Cond w/E GND DIN A 53950	050829	2
	Valve Assembly, LT70 Log Deck	036805	1
4	Valve, 4-Way Closed 12V Hydraulic Add-on	025826 ²	1
5	O-Ring, 1/16" Dia. x 5/8" OD	036806	2
6	Screw, 1/4-20 x 2 1/4" Socket Head	F05005-170	3
7	Fitting, #8 SAE x #6 JIC	P12703	2
	Plate, Log Deck Adaptor	045818	2
	Fluid, Hydraulic HVI32 (Gal) All Weather	006397	1
	Manual, Log Infeed Option	M1024	1

¹ Use LD70-RKIT2 to install Log Deck to LT70HD Remote Rev. A6.00 and later. Use LD70-RKIT for LT70HD Remote with extra 8th valve port ([See Section 4.17](#)).

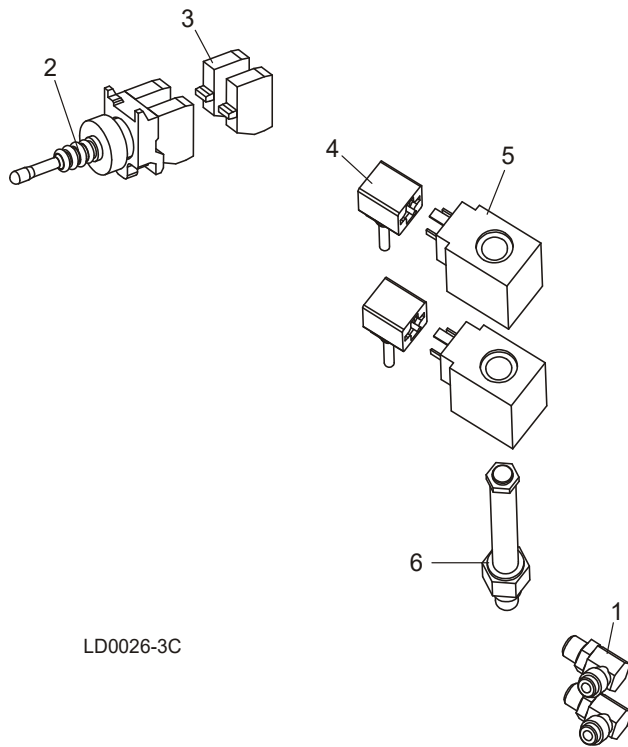
² Replaces 036732 originally supplied prior to 12/10 (new vendor).

4 Replacement Parts

Installation Kit (LT70HD Remote)

4.17 Installation Kit (LT70HD Remote)

For LT70HD Remote Rev. A1.00 - A5.03



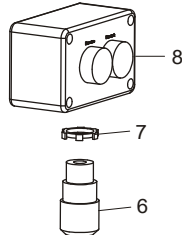
REF	DESCRIPTION (◆ Indicates Parts Available In Assemblies Only)	PART #	QTY.
	INSTALLATION KIT, LT70-R LOG DECK	LD70-RKIT ¹	1
	Hose, 3/8" Hydraulic w/Fittings 84" HP	013994	2
	Hose, 3/8" Hydraulic w/Fittings 48" HP	025987	4
	Fitting, 3/8" JIC Union Small Hex	016540	4
1	Fitting, #6 SAE x 3/8" JIC Elbow	P12704	2
	Fitting, 3/8" JIC Female Cap	016816	2
	Electrical Kit, LT70-R Log Deck	050966	1
2	Switch, Joystick w/2 NO Contacts	050766	1
3	Contact, NO ZD4 PA103	052075 ²	2
4	Plug Assembly, 2-Cond w/E GND DIN A 53950	050829	2
5	Coil, 12V Hydraulic Actuator	045819	2
6	Valve, Hi-Flow Floating Ctr Spool	045820	1
	Plate, Log Deck Adaptor	045818	2

¹ Use LD70-RKIT to install Log Deck to LT70HD Remote with extra 8th valve port (prior to Rev. A6.00). Use LD70-RKIT2 for LT70HD Remote Rev. A6.00 and later ([See Section 4.16](#)).

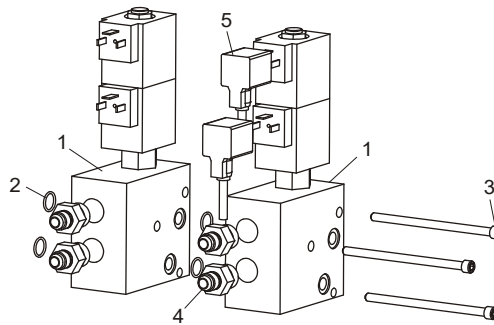
² Contact 052075 replaces 050539 NO ZB4 BE101 originally supplied prior to 11/04.

4.18 Installation Kit (LT300/WM3000/WM3500)

For LT300 Rev. B3.00+
WM3000/WM3500 All



LD0040-5



REF	DESCRIPTION (◆ Indicates Parts Available In Assemblies Only)	PART #	QTY.
	INSTALLATION KIT, LT300 LOG DECK (REV. B3+)	LD300KIT3	1
	Hose, 3/8" Hydraulic w/Fittings 48" HP	025987	4
	Hose, 3/8" Hydraulic w/Fittings CS 212" Long HP	074185	2
	Hose, 3/8" Hydraulic w/Fittings 292" HP	025983	2
	Fitting, 3/8" JIC 'T'	015487	2
	Valve Assembly, Log Deck Add-On	036825	1
1	Valve, 24V Hydraulic Add-On 4-Way Closed	025827 ¹	2
	Valve, Hi-Flow Floating Center Hydraulic	045820 ²	1
	Valve, 4-Way Hydraulic	051556 ²	1
	Coil, 24V Hydraulic #CAP-024D	051558	2
2	O-Ring, .070" Dia. x 5/8" OD	036806	4
3	Screw, 1/4-20 x 4 1/4" Socket Head	F05005-171	3
4	Fitting, 8 SAE x 3/8" JIC	P12703	4
	Electrical Kit, LT300 Log Deck	052916	1
5	Cable, 5M Form A DIN 24VDC w/LED Plug	024923	2
6	Connector, .125 - .375 1/2" Hub Cord	E23492	4
7	Nut, 1/2" #141 Lock	E20461	4
8	Control Box, Log/Deck Forward/Reverse	053213 ³	1

¹ Replaces 036724 valve used from 12/10 to 5/14. 036724 replaced 036733 check valve used prior to 12/10.

² Use 045820 to service Valve 036734 supplied after 12/10. Use 051556 to service 036733 valve supplied prior to 12/10.

³ Replaces 025295 originally supplied prior to 4/08 (vendor discontinued).

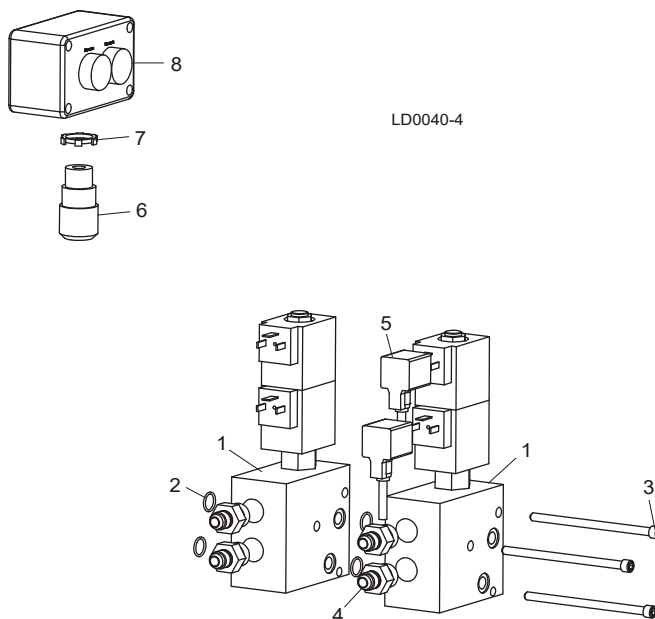
4 Replacement Parts

Installation Kit (LT300)

4.19 Installation Kit (LT300)

For LT300

Rev. A9.00 - B2.02



REF	DESCRIPTION (◆ Indicates Parts Available In Assemblies Only)	PART #	QTY.
	INSTALLATION KIT, LT300 LOG DECK (REV. A9-B2.02)	LD300KIT2	1
	Hose, 3/8" Hydraulic w/Fittings 48" HP	025987	4
	Hose, 3/8" Hydraulic w/Fittings CS 212" Long HP	074185	2
	Hose, 3/8" Hydraulic w/Fittings 292" HP	025983	2
	Fitting, 3/8" JIC 'T'	015487	2
	Valve Assembly, Log Deck Add-On	036825	1
1	Valve, 24V Hydraulic Add-On PO Check	036734 ¹	2
	Valve, Hi-Flow Floating Center Hydraulic	045820 ²	1
	Valve, 4-Way Hydraulic	051556 ²	1
	Coil, 24V Hydraulic #CAP-024D	051558	2
2	O-Ring, .070" Dia. x 5/8" OD	036806	4
3	Screw, 1/4-20 x 4 1/4" Socket Head	F05005-171	3
4	Fitting, 8 SAE x 3/8" JIC	P12703	4
	Electrical Kit, LT300 Log Deck	017627	1
	Relay, Solid State 24V 2A DIN	024925	2
5	Cable, 5M Form A DIN 24VDC w/LED Plug	024923	2
6	Connector, .125 - .375 1/2" Hub Cord	E23492	4
7	Nut, 1/2" #141 Lock	E20461	4
8	Control Box, Log/Deck Forward/Reverse	053213 ³	1

¹ Replaces 036733 check valve used prior to 12/10.

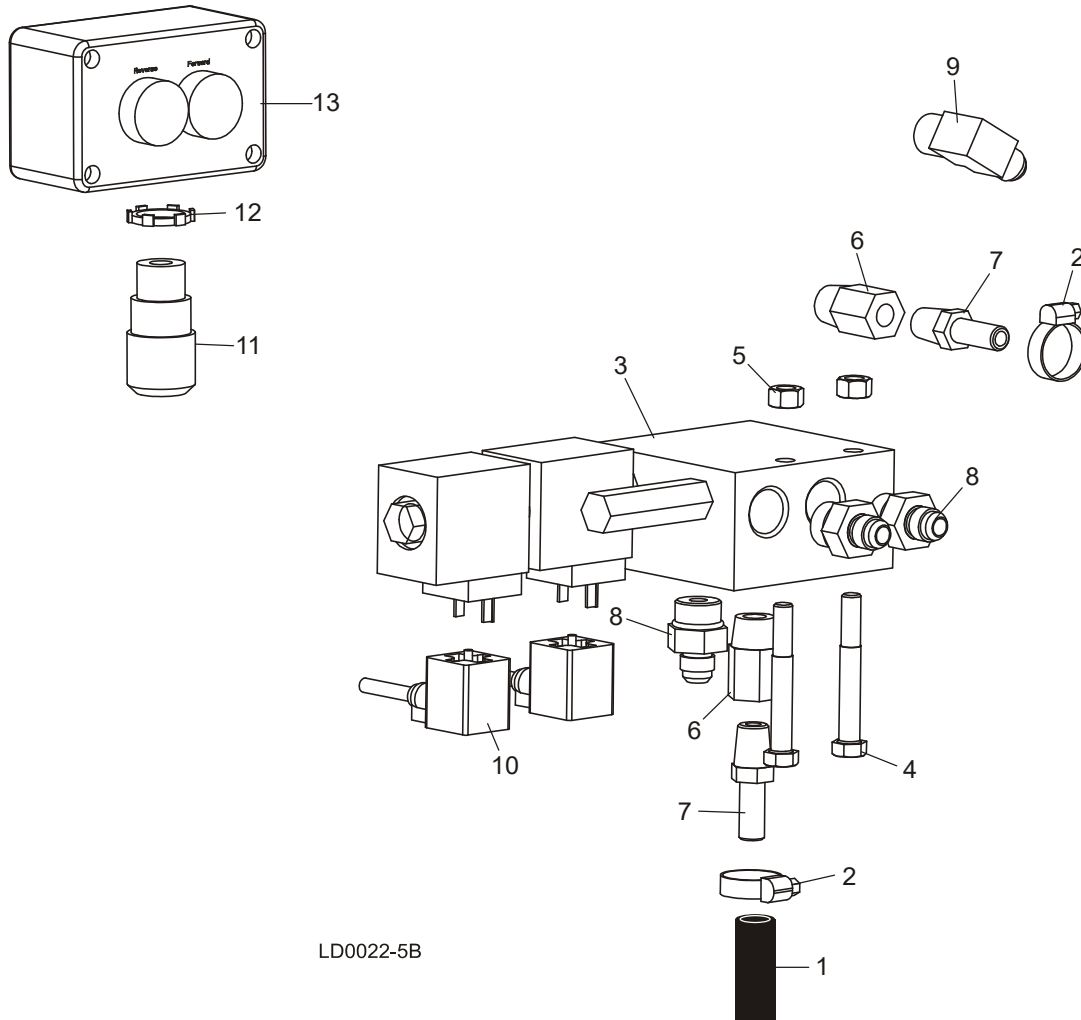
² Use 045820 to service Valve 036734 supplied after 12/10. Use 051556 to service 036733 valve supplied prior to 12/10.

³ Replaces 025295 originally supplied prior to 4/08 (vendor discontinued).

4.20 Installation Kit (LT300)

For LT300

Rev. A1.00 - A8.00



LD0022-5B

REF	DESCRIPTION (◆ Indicates Parts Available In Assemblies Only)	PART #	QTY.
	INSTALLATION KIT, LT300 LOG DECK	LD300KIT	1
	Hose, 3/8" Hydraulic Double-Braided	042828 ¹	105.66 ft.
	Fitting, 3/8" Hose End, 37° Female Swivel	042829 ¹	22
1	Hose, 3/8" Low Pressure Hydraulic	R01892-1	2 ft.
2	Clamp, 11/16" Worm	P12739	2
	Fitting, 3/8" JIC Union Small Hex	016540	2
	Fitting, 3/8" JIC 'T'	015487	2
3	Valve, Solenoid w/C.O.R.	050148	1
4	Bolt, 5/16-18 x 2 1/2" Hex Head	F05006-10	2
5	Nut, 5/16-18 Hex Lock	F05010-6	2
6	Fitting, 8 SAE x 3/8" NPT Female	P12706	2

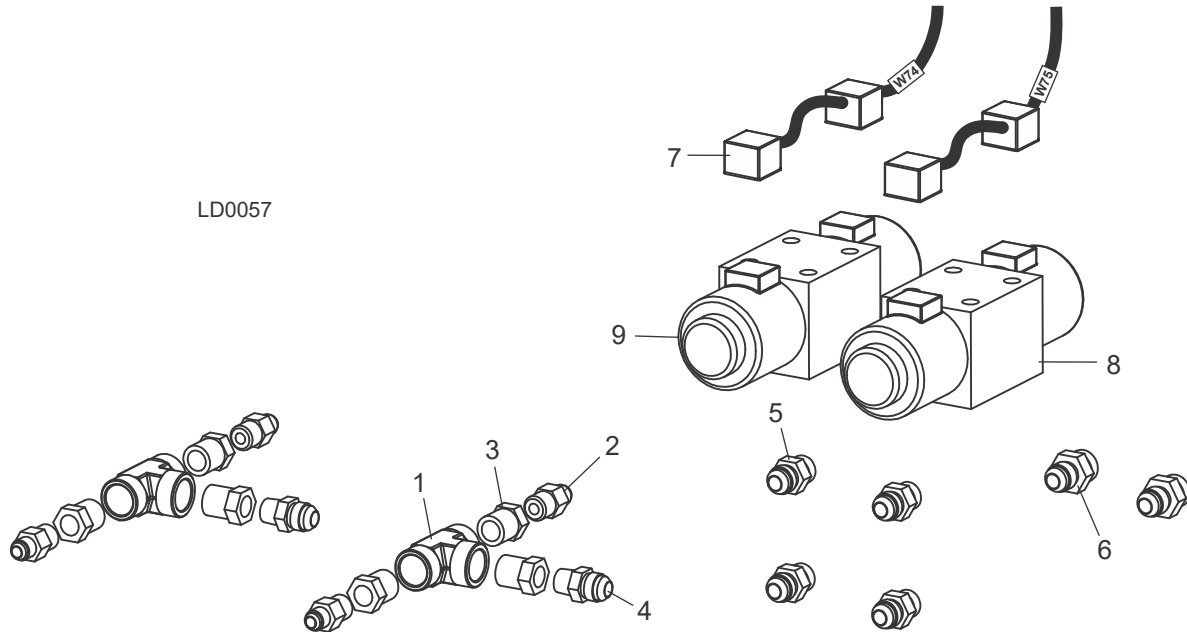
4**Replacement Parts***Installation Kit (LT300)*

7	Fitting, 3/8" NPT x 3/8" Hose Barb	P12724	2	
8	Fitting, 8 SAE x 3/8" JIC	P12703	4	
9	Fitting, 3/8" NPT x 3/8" JIC Elbow	016820	1	
	Electrical Kit, LT300 Log Deck	017627	1	
	Relay, Solid State 24V 2A DIN	024925	2	
10	Cable, 5M Form A DIN 24VDC w/LED Plug	024923	2	
11	Connector, .125 - .375 1/2" Hub Cord	E23492	4	
12	Nut, 1/2" #141 Lock	E20461	4	
13	Control Box, Log/Deck Forward/Reverse	053213 ²	1	

¹ Hose lengths provided as follows (2 fittings each): Two 19' hoses (hydraulic valve to log deck position), two 16' hoses (log deck motor to log deck valve). Two 7' hoses (loader hoses to log deck 'T's). Four 4' hoses (log deck 'T's to loader cylinders). One 2' hose (hydraulic pump manifold to log deck valve).

² Replaces 025295 originally supplied prior to 4/08 (vendor discontinued).

4.21 Installation Kit (WM4000)



REF	DESCRIPTION (◆ Indicates Parts Available In Assemblies Only)	PART #	QTY.	
	INSTALLATION KIT, WM4000 LOG DECK	LD4000KIT	1	
	Hose, 3/8" Hydraulic w/Fittings CS 72" Long HP	074184	4	
	Hose, 3/8" Hydraulic w/Fittings CS 310" Long HP	074186	4	
	Fitting Assembly, WM4000 LD Cylinder Hose "T"	074031	2	
1	Fitting, 1/2" NPT Female Tee	016793	1	
2	Fitting, 3/8" NPT-3/8" JIC Male Connector	016819	2	
3	Fitting, 1/2" NPT x 3/8" NPT Hex Reducer	028073	3	
4	Fitting, 3/8" NPT-#8 JIC Male Connector	036822	1	
5	Fitting, #8SAE-#8 JIC	028076	4	
6	Fitting, #10 SAE-#8 JIC	025963	2	
7	Control Assembly, Industrial Mill Log Deck	068211	1	◆
8	Valve, D05SD-2F-24D-35 Hyvair Hydraulic (Chain Forward/Reverse)	074100	1	
9	Valve, D05SD-2B-24D-35 Hyvair Hydraulic (Arms Up/Down)	074101	1	
	Tie Wrap, 5/16" x 15 UV Black	F05089-5	20	