

SECTION 4 REPLACEMENT PARTS

4.1 Accuset 2 Kit, Complete

REF	DESCRIPTION (◆ Indicates Parts Available In Assemblies Only)	PART #	QTY.	
Order the two kits below to install Accuset to LT30/40/HD non-remote sawmills:				
	SENSOR KIT, ACCUSET TRANSDUCER FIELD-INSTALLED (2006+)	006012 ¹	1	
	SENSOR KIT, ACCUSET TRANSDUCER FIELD-INSTALLED (PRE-2006)	006013 ¹	1	
	Sensor Parts, 2006+ (See Section 4.2)			
	Sensor Parts, pre-2006 (See Section 4.3)			
	Template, Accuset Sensor Mount	035448	1	
	CONTROL KIT, ACCUSET 2 FIELD-INSTALLED	053080	1	
	Control Parts (See Section 4.5)			
	Bag Assembly, Accuset 2 Installation Kit	053082	1	
	Manual, Accuset 2 Option	M1516	1	

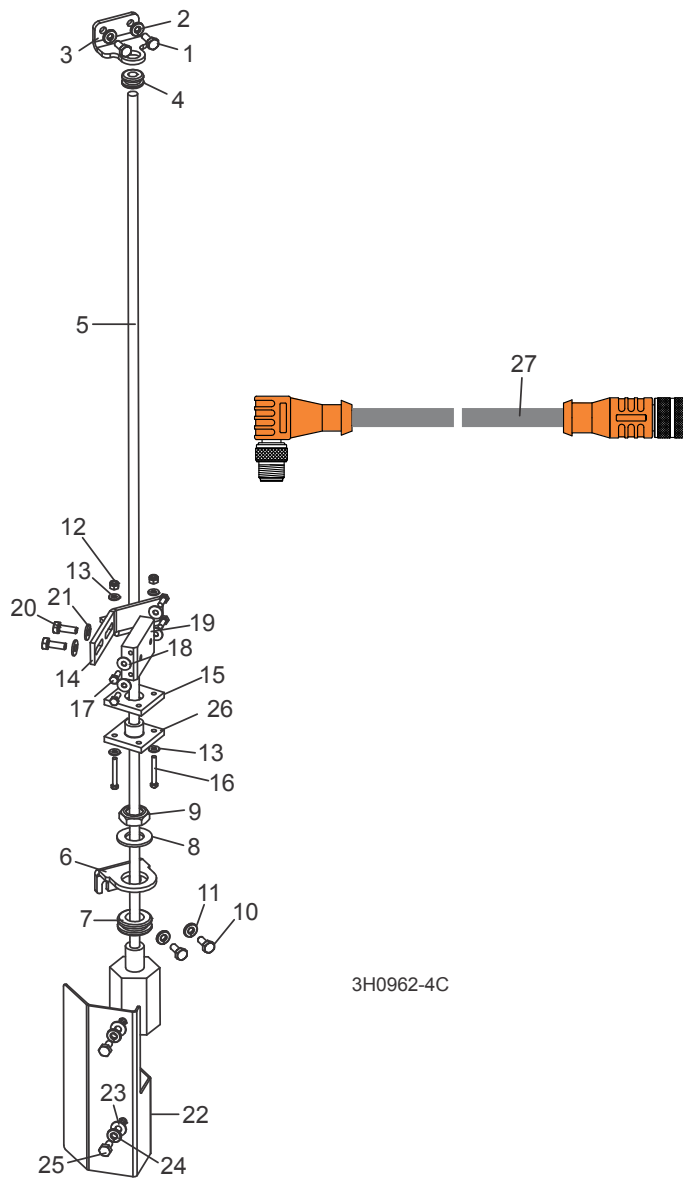
¹ Use 006012 for LT30 Rev. J8.01+, LT40 Rev. J9.01+, LT30 Super Rev. J3.07+, LT40 Super Rev. J4.08+, LT30HD Rev. J9.01+, LT40HD Rev. K1.01+, LT30HD Super Rev. J8.08+ and LT40HD Super Rev. J8.09+. This kit only includes sensor and cables required. Use kit 006013 for all previous revisions. This kit includes scale mount and pointer assembly.

4 Replacement Parts

Sensor Assembly

4.2 Sensor Assembly

2006+ Sawmill



REF	DESCRIPTION (◆ Indicates Parts Available In Assemblies Only)	PART #	QTY.	
	TRANSDUCER ASSEMBLY, ACCUSET	025019	1	◆
1	Screw, 1/4-20 x 5/8" Hex Head Bolt	F05005-86	2	
2	Washer, 1/4" Split Lock	F05011-14	2	
3	Bracket, Upper Sensor Mount	035560	1	
4	Grommet, 3/8" ID Rubber	025248	1	

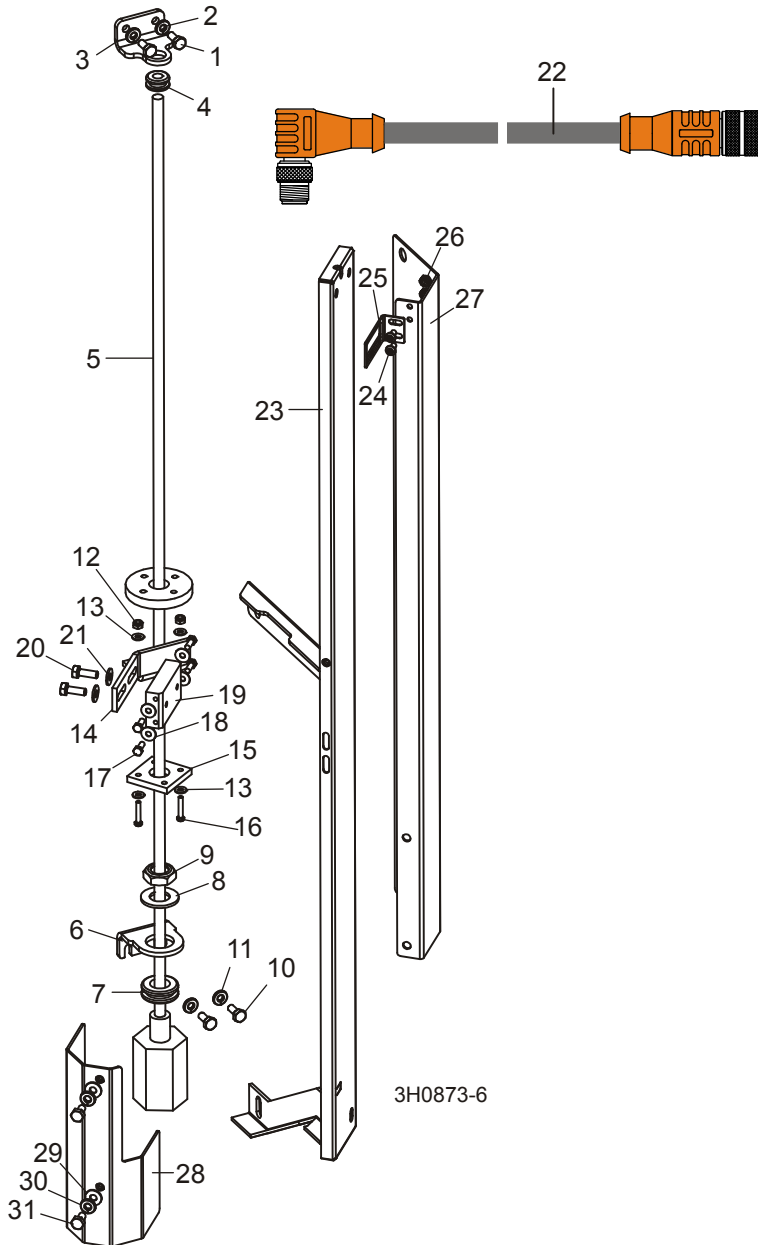
	Sensor Assembly, Accuset Transducer	025246	1	◆
5	Sensor, Balluff Transducer Style Z	038659	1	
6	Bracket, Lower Sensor Mount	035544	1	
7	Grommet, 3/4" ID Rubber	025247	1	
8	Washer, 3/4" ID Nylon	025250	1	
9	Nut, 3/4-16 Nylon Lock	F05010-171	1	
10	Screw, 1/4-20 x 5/8" Hex Head Bolt	F05005-86	2	
11	Washer, 1/4" Split Lock	F05011-14	2	
12	Nut, #8-32 Hex Nylon Lock	F05010-169	2	
13	Washer, #8 SAE Flat	F05011-41	4	
14	Bracket, Sensor Magnet Mounting	035444	1	
15	Magnet, Balluff Transducer	038658	1	
16	Screw, #8-32 x 1 1/4" Hex Head Stainless Steel	F05004-291	2	
17	Screw, #10-24 x 1/2" Hex Head	F05004-27	4	
18	Washer, #10 SAE Flat	F05011-18	4	
19	Block, Sensor Magnet Mounting	035440	1	
20	Bolt, 1/4-20 x 3/4" Full Thread Hex Head	F05005-1	2	
21	Washer, 1/4" SAE Flat	F05011-11	2	
	Wire Tie, 3/16" x 10" Black UV	F05089-8	3	
	Cover Kit, Lower Accuset Sensor	003184	1	
22	Cover Weldment, Lower Accuset Sensor	038987	1	
23	Washer, 1/4" SAE Flat	F05011-11	2	
24	Washer, 1/4" Split Lock	F05011-14	2	
25	Bolt, 1/4-20 x 1/2" Hex Head	F05005-15	2	
	Instruction Sheet, Lower Accuset Sensor Cover Retrofit	003184-1291	1	
26	Bushing, Transducer Vibration Dampener	071357	1	
	CABLE KIT, ACCUSET 2 TRANSDUCER REPLACEMENT	006029	1	
27	Cable Assembly, Accuset 2 Transducer	052920	1	◆
	Wire Tie, 5/16" x 15" UV Black	F05089-5	3	

4 Replacement Parts

Sensor Assembly

4.3 Sensor Assembly

pre-2006 Sawmill



REF	DESCRIPTION (◆ Indicates Parts Available In Assemblies Only)	PART #	QTY.	
	TRANSDUCER ASSEMBLY, ACCUSET	025019	1	◆
1	Screw, 1/4-20 x 5/8" Hex Head Bolt	F05005-86	2	
2	Washer, 1/4" Split Lock	F05011-14	2	
3	Bracket, Upper Sensor Mount	035560	1	

4	Grommet, 3/8" ID Rubber	025248	1	
	Sensor Assembly, Accuset Transducer	025246	1	◆
5	Sensor, Balluff Transducer Style Z	038659	1	
6	Bracket, Lower Sensor Mount	035544	1	
7	Grommet, 3/4" ID Rubber	025247	1	
8	Washer, 3/4" ID Nylon	025250	1	
9	Nut, 3/4-16 Nylon Lock	F05010-171	1	
10	Screw, 1/4-20 x 5/8" Hex Head Bolt	F05005-86	2	
11	Washer, 1/4" Split Lock	F05011-14	2	
12	Nut, #8-32 Hex Nylon Lock	F05010-169	2	
13	Washer, #8 SAE Flat	F05011-41	4	
14	Bracket, Sensor Magnet Mounting	035444	1	
15	Magnet, Balluff Transducer	038658	1	
16	Screw, #8-32 x 7/8" Hex Head	F05004-182	2	
17	Screw, #10-24 x 1/2" Hex Head	F05004-27	4	
18	Washer, #10 SAE Flat	F05011-18	4	
19	Block, Sensor Magnet Mounting	035440	1	
20	Bolt, 1/4-20 x 3/4" Full Thread Hex Head	F05005-1	2	
21	Washer, 1/4" SAE Flat	F05011-11	2	
	Wire Tie, 3/16" x 10" Black UV	F05089-8	3	
	CABLE KIT, ACCUSET 2 TRANSDUCER REPLACEMENT	006029	1	
22	Cable Assembly, Accuset 2 Transducer	052920	1	◆
	Wire Tie, 5/16" x 15" UV Black	F05089-5	3	
23	MOUNT WELDMENT, SCALE PAINTED	W11996	1	
	POINTER ASSEMBLY, ACCUSET ADJUSTABLE	038591	1	
24	Screw, #10-24 x 3/8" Slotted Pan Head	F05004-3	2	
25	Pointer, Accuset Scale	038585	1	
26	Nut, #10-24 Hex Self-Locking	F05010-14	2	
27	Plate, Accuset Pointer Mount Painted	038586	1	
	COVER KIT, LOWER ACCUSET SENSOR (12/05+)	003184 ¹	1	
	COVER KIT, LOWER ACCUSET SENSOR (PRE-12/05)	003183 ¹	1	
28	Cover Weldment, Lower Accuset Sensor(12/05+)	038987	1	
	Cover Weldment, Lower Accuset Sensor (Pre-12/05)	038988	1	
29	Washer, 1/4" SAE Flat	F05011-11	2	
30	Washer, 1/4" Split Lock	F05011-14	2	
31	Bolt, 1/4-20 x 1/2" Hex Head	F05005-15	2	
	Instruction Sheet, Lower Accuset Sensor Cover Retrofit	003184-1291	1	

¹ Lower Sensor Cover available 12/06 to protect cable connection from debris. Use kit 003183 to retrofit sensor assembly with original straight scale pointer. Use kit 003184 to retrofit sensor assemblies upgraded with bent pointer. [See Form #1291.](#)

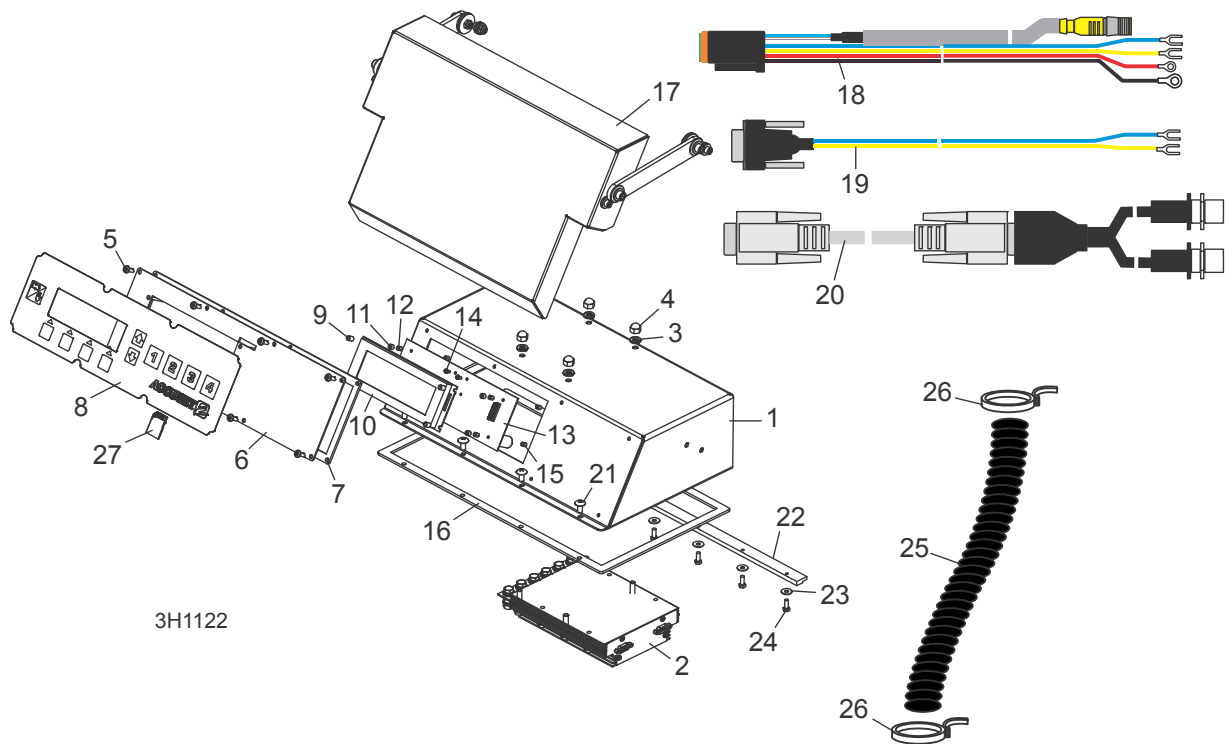
4 Replacement Parts

Control Assembly

4.4 Control Assembly

Accuset 2

Rev. C.00+



REF	DESCRIPTION (◆ Indicates Parts Available In Assemblies Only)	PART #	QTY.	
	CONTROL ASSEMBLY, ACCUSET 2	053051	1	
1	Box Weldment, Accuset 2 Control	003800	1	◆
2	Control Assembly, Accuset 2 Motor	057821LS-FR	1	
	PCB Assembly, Transient Voltage Suppression	069556	1	
3	Washer, 1/4" Split Lock	F05011-14	4	
4	Nut, 1/4-20 Stainless Acorn	F05010-204	4	
5	Screw, #10-24 x 1/2" Phillips Head	F05015-17	8	
	Panel Assembly, Accuset 2 Modular Front	069649	1	
6	Panel Weldment, AccuSet 2 Front Module	055929	1	
7	Gasket, Accuset Front Panel	024870	1	
8	Switch, Accuset 2 Membrane	052874	1	
9	Spacer, 1/4" OD x 5/16" Long Nylon	069650	4	
10	Display, Accuset 2 Front Panel	052900	1	
11	Spacer, 1/8" ID x 1/4" OD x 3/16" Long	024864	4	
12	Spacer, 1/4" Hex Tapped	024863	4	
13	PCB Assembly, Accuset 2 Replacement Control	069662	1	
14	Screw, #4-20 x 1/4" T10 Self-Tapping	F05005-183	4	

15	Spacer, 1/4" Hex Tapped	024863	4	
16	Gasket, Accuset Control Box	015980	1	
17	Cover Parts (See Section 4.6)			
18	Harness Assembly, Accuset 2 LT40/70 HMI	053036	1	
19	Cable Assembly, LT40/70 Bridge Bypass	053037	1	
20	Cable Assembly, Dual M12 to D-Sub	053696	1	
21	SCREW, #10-24 X 1/2" PHILLIPS HEAD	F05015-17	4	
22	BRACKET, ACCUSET HOLDOWN CLAMP	015296	1	
23	WASHER, #10 SAE FLAT	F05011-18	4	
24	BOLT, #10-24 X 1/2" HEX HEAD	F05004-27	4	
25	CONDUIT, 5/8" SPLIT LOOM HIGH TEMP	024323-62	8 in.	
26	TIE WRAP, 3/16" X 6" BLACK UV	F05089-3	2	
27	CARD KIT, ACCUSET 2 SOFTWARE UPDATE	053225	1	

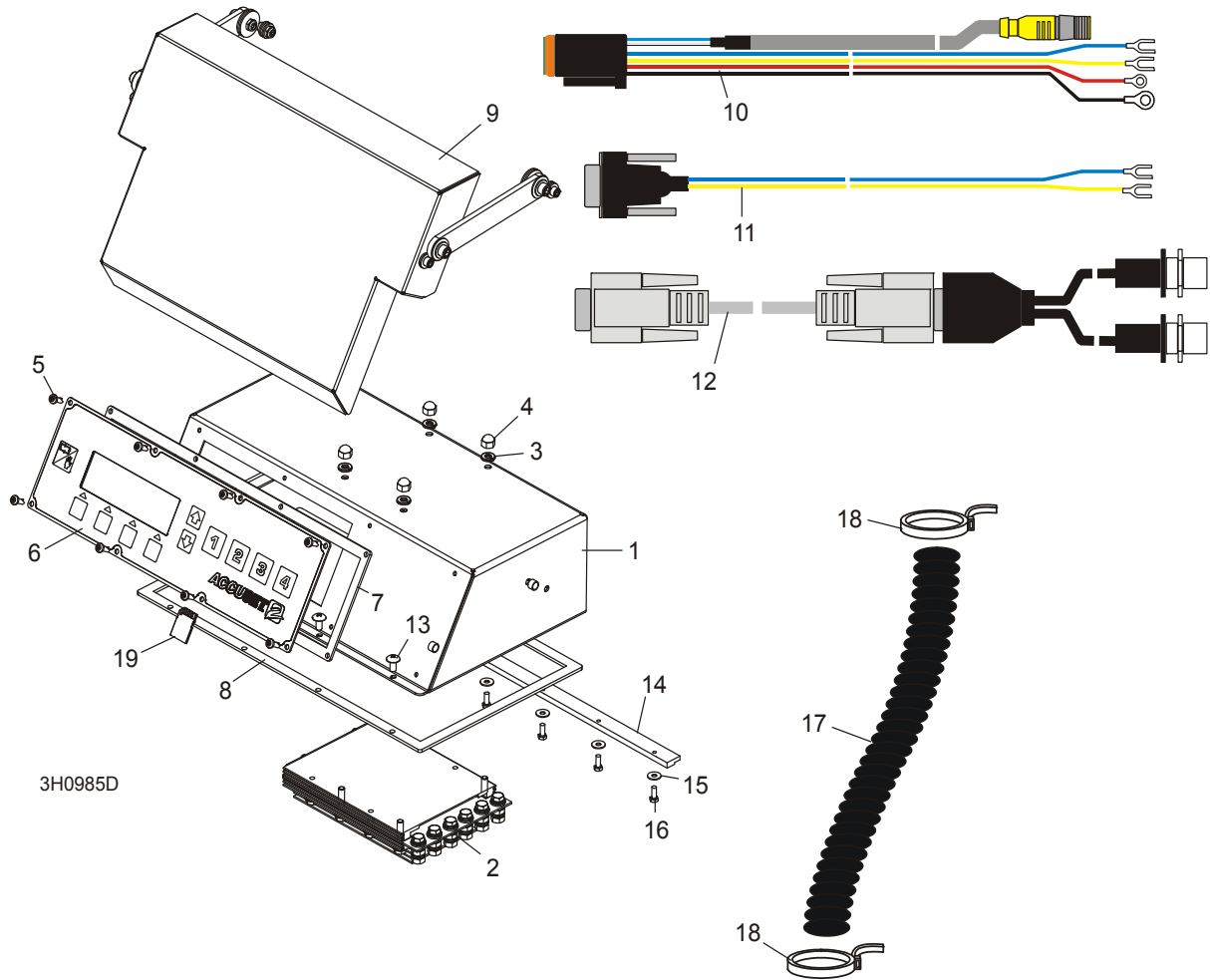
4 Replacement Parts

Control Assembly

4.5 Control Assembly

Accuset 2

Rev. A.00 - B.02



3H0985D

REF	DESCRIPTION (◆ Indicates Parts Available In Assemblies Only)	PART #	QTY.	
	CONTROL ASSEMBLY, ACCUSET 2	053051	1	
1	Box Weldment, Accuset 2 Control	003800	1	◆
2	Control Assembly, Accuset 2 Motor	057821LS-FR ¹	1	
	PCB Assembly, Transient Voltage Suppression	069556	1	
	Suppressor Assembly, Dual 5KW Transient Voltage	053204 ²	1	◆
3	Washer, 1/4" Split Lock	F05011-14	4	
4	Nut, 1/4-20 Stainless Acorn	F05010-204	4	
5	Screw, #10-24 x 1/2" Phillips Head	F05015-17	8	
6	Panel Assembly, Accuset 2 Front	053018 ³	1	
7	Gasket, Accuset Front Panel	024870	1	

8	Gasket, Accuset Control Box	015980	1	
9	Cover Parts (See Section 4.6)			
10	Harness Assembly, Accuset 2 LT40/70 HMI	053036	1	
11	Cable Assembly, LT40/70 Bridge Bypass	053037	1	
12	Cable Assembly, Dual M12 to D-Sub	053696 ⁴	1	
13	SCREW, #10-24 X 1/2" PHILLIPS HEAD	F05015-17	4	
14	BRACKET, ACCUSET HOLDOWN CLAMP	015296	1	
15	WASHER, #10 SAE FLAT	F05011-18	4	
16	BOLT, #10-24 X 1/2" HEX HEAD	F05004-27	4	
17	CONDUIT, 5/8" SPLIT LOOM HIGH TEMP	024323-62	8 in.	
18	TIE WRAP, 3/16" X 6" BLACK UV	F05089-3	2	
19	CARD KIT, ACCUSET 2 SOFTWARE UPDATE	053225	1	

¹ Field Replacement Kit 057821LS-FR replaces assembly 057821LS supplied prior to 5/11. Kit includes diode PCB to provide transient voltage spike prevention. Dual-Axis Control 057821LS-FR replaces 052974 to reduce cost (Rev. B.00).

² Added Rev. A.01 to protect H-Bridge module from voltage spikes due to loose battery/fuse connections. Use kit 053205 to retrofit previous revisions. Effective Rev. A.02, Control Assembly 052974 was modified to eliminate the need for the suppressor.

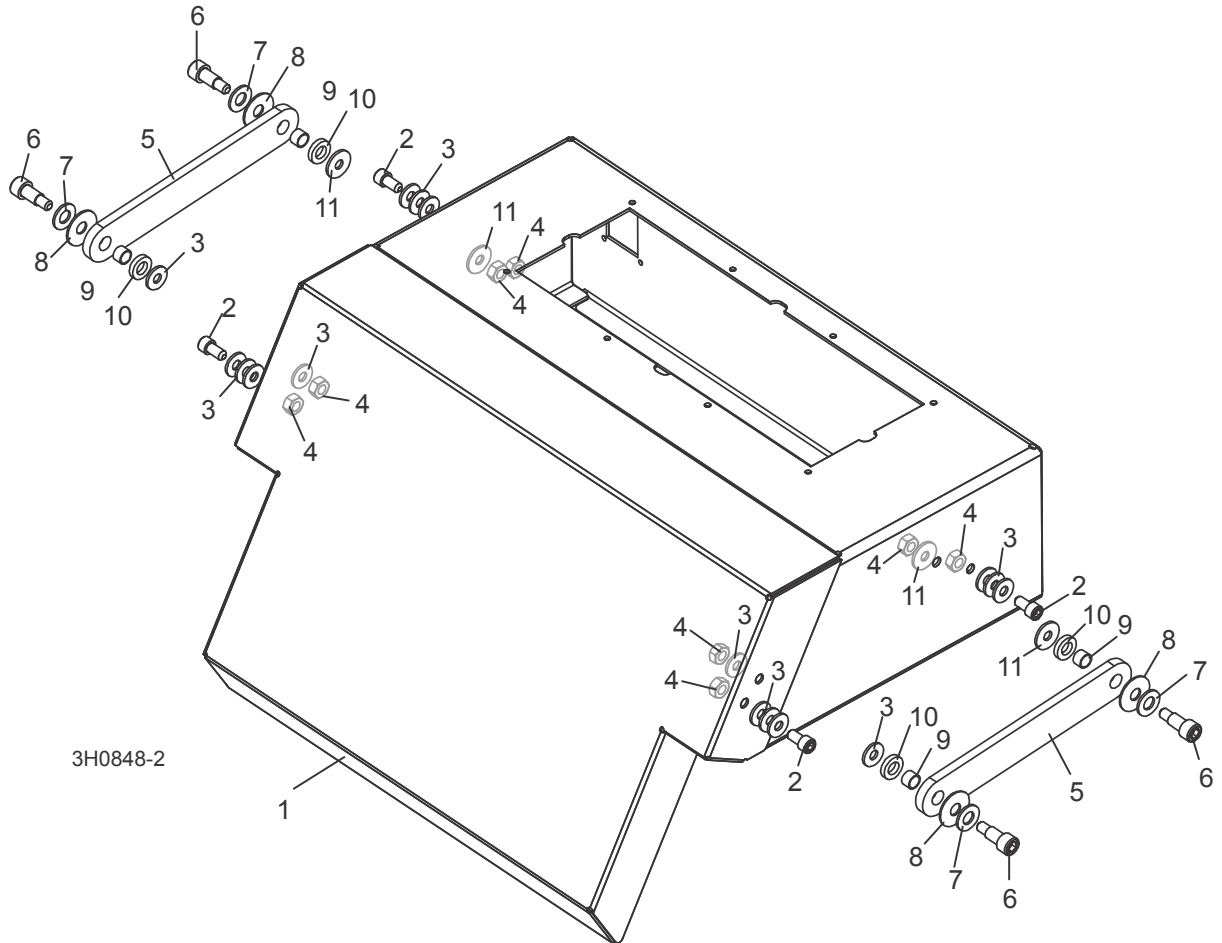
³ No longer available. Order 069649 Accuset 2 Modular Front Panel Assembly as replacement.

⁴ Cable Assembly 053696 replaces Harness 052919 supplied prior to 3/10 (cost reduction).

4 Replacement Parts

Cover Assembly

4.6 Cover Assembly



REF	DESCRIPTION (◆ Indicates Parts Available In Assemblies Only)	PART #	QTY.
1	COVER, ACCUSET CONTROL	016703	1
2	SCREW, 1/4-20 X 1/2" STAINLESS SOCKET HEAD	F05005-148	4
3	WASHER, 1/4" SAE FLAT	F05011-11	16
4	NUT, 1/4-20 HEX HALF NYLON LOCK	F05010-156	8
5	ARM, ACCUSET COVER LINK	016704	2
6	BOLT, 5/16" X 1/2" SHOULDER 1/4-20 THREAD	F05006-69	4
7	WASHER, 5/16" SAE FLAT	F05011-17	4
8	WASHER, 5/16" BELLEVILLE	F05011-93	4
9	BUSHING, 5/16" ID X 3/8" OD X 1/4" LONG BRONZE	016655	4
10	WASHER, 5/16" FLAT NYLON	F05011-92	4
11	WASHER, 1/4" FENDER	F05011-12	4