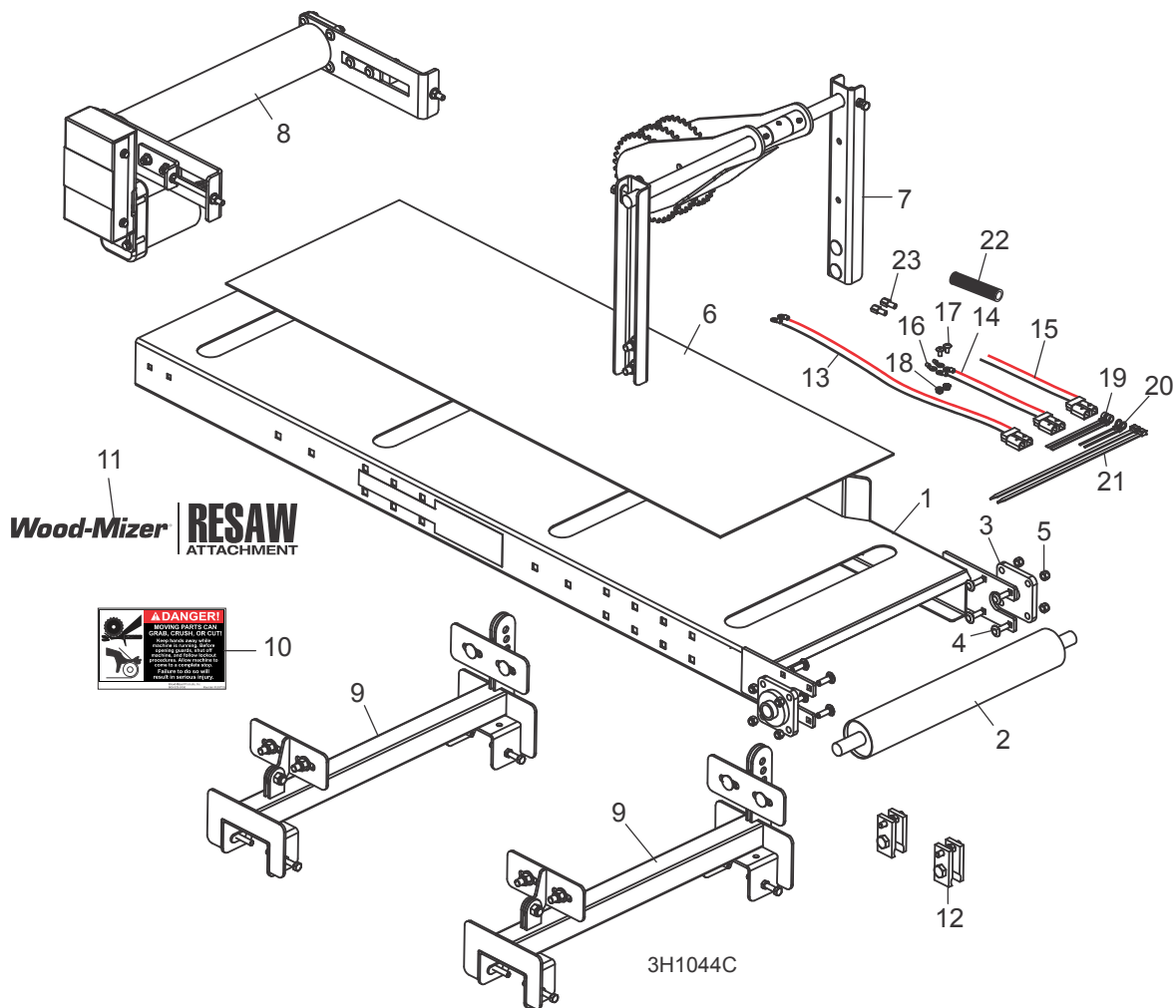


## SECTION 2 REPLACEMENT PARTS

### 2.1 Resaw Assembly



REF	DESCRIPTION (◆ Indicates Parts Available In Assemblies Only)	PART #	QTY.	
	<b>RESAW ATTACHMENT, RS2 SAWMILL</b>	RS2	1	
	Resaw Assembly, RS2	059357	1	◆
1	Channel Weldment, RS2 Resaw	007283 <sup>1</sup>	1	
2	Pulley, 3" x 20" Idle Drum	007312	1	
3	Bearing, VF4S-216 Flanged	014090	2	
4	Bolt, 3/8-16 x 1 1/4" Carriage Head Grade 5	F05007-127	8	
5	Nut, 3/8-16 Hex Nylon Lock	F05010-10	8	
6	Belt, 19" Grip-Top Resaw ( <a href="#">See Section 2.6</a> for optional Shingle Belt)	007417	1	
7	Hold-Down Parts ( <a href="#">See Section 2.2</a> )			
8	Feed Drive Parts ( <a href="#">See Section 2.3</a> )			

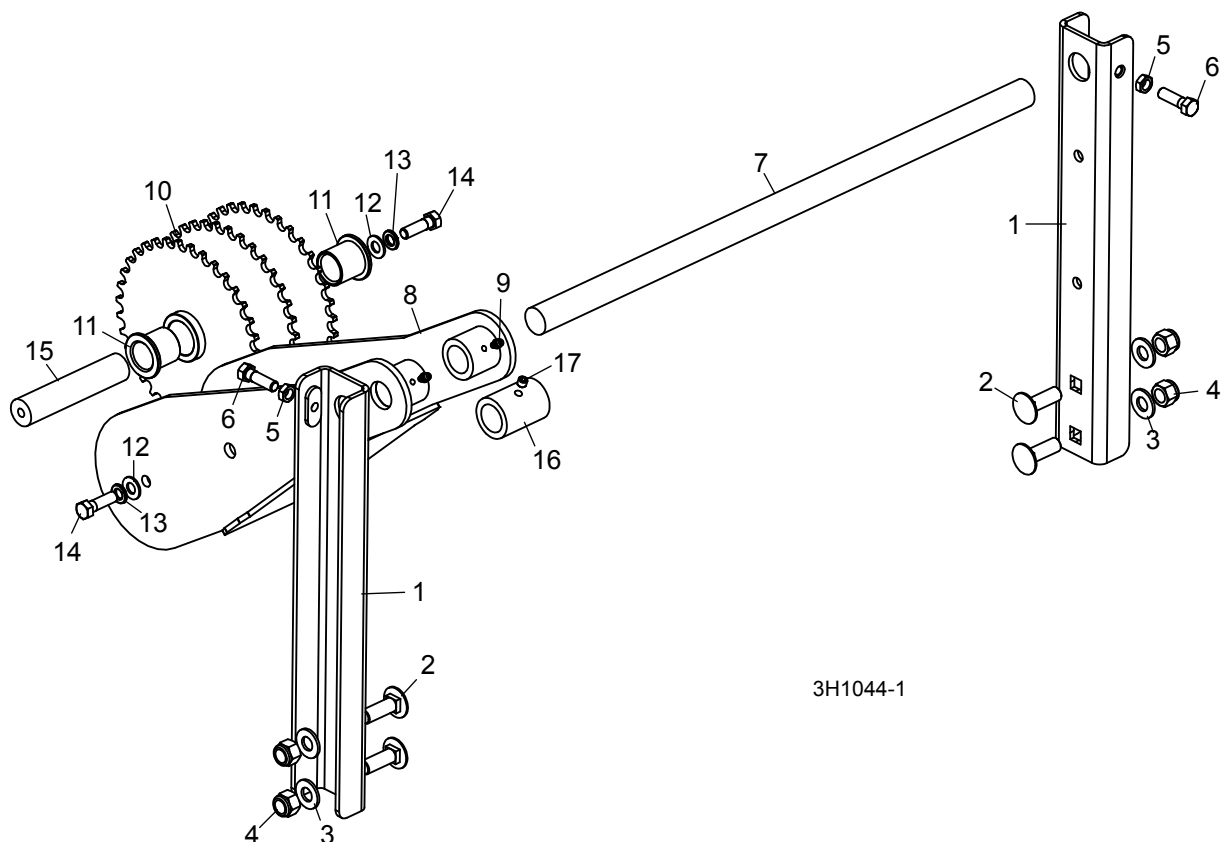
<b>9</b>	Resaw Mount Parts ( <a href="#">See Section 2.4</a> )			
<b>10</b>	Decal, Moving Parts Danger	028720	2	
<b>11</b>	Decal, RS2 Wood-Mizer Logo	007447	1	
<b>12</b>	Carriage Lock Clamp Parts ( <a href="#">See Section 2.5</a> )			
	Harness Set, RS2 Complete	008909	1	
	Harness Kit, Resaw Power Supply Retro	008906	1	
<b>13</b>	Harness Assembly, Power Feed Motor Connector	008903	1	◆
<b>14</b>	Harness Assembly, Power Feed Control to Resaw	008904	1	◆
<b>15</b>	Harness Assembly, LT15 Power Feed Control to RS2	008908	1	
<b>16</b>	Terminal, 1/4" 10-12Ga Ring	F05092-2R	2	
<b>17</b>	Screw, #10-24 x 3/8" Phillips Round Head	F05004-3	2	
<b>18</b>	Nut, #10-24 Self-Locking Hex	F05010-14	2	
<b>19</b>	Tie Wrap, 1/4" x 6"	F05089-1	2	
<b>20</b>	Tie Wrap, .100" x 4"	F05089-2	2	
<b>21</b>	Tie Wrap, 5/16" x 15"	F05089-5	2	
<b>22</b>	Tubing, 13/16" OD x 5/8" ID Norprene	R02349	.5 ft.	
<b>23</b>	Terminal, 1/4" 10-12Ga Quick Male FI	F05708-15	2	

<sup>1</sup> Added another set of mounting holes for hold down roller mount to miss debarker on LT35 sawmills when cutting under 1" (Rev. A1.01; 9/17). Slots added to prevent sawdust from building up between the belt and the conveyor plate (2/10).

## 2 Replacement Parts

### Upper Hold-Down Assembly

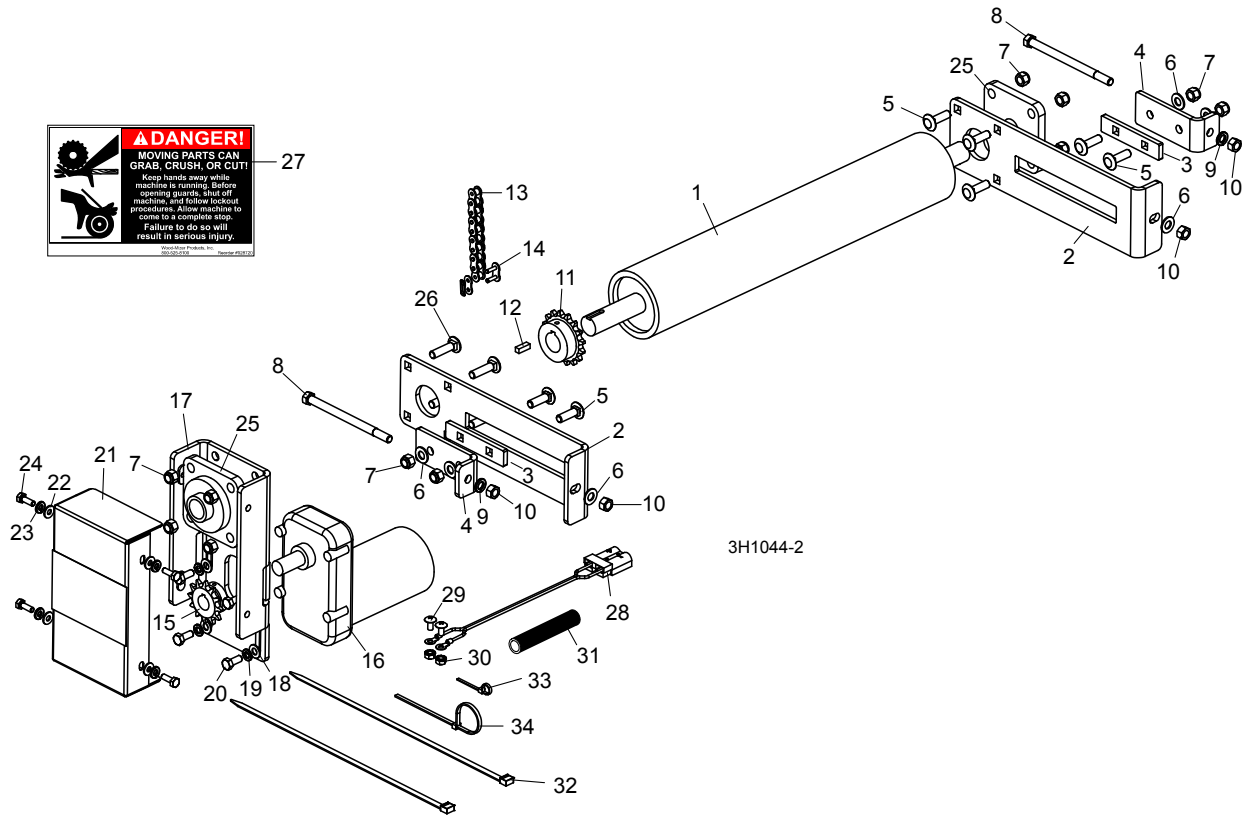
## 2.2 Upper Hold-Down Assembly



3H1044-1

REF	DESCRIPTION (◆ Indicates Parts Available In Assemblies Only)	PART #	QTY.
1	CHANNEL WELDMENT, HOLD-DOWN POST	007284	2
2	BOLT, 1/2-13 X 1 1/2" CARRIAGE HEAD	F05008-150	4
3	WASHER, 1/2" SAE FLAT	F05011-2	4
4	NUT, 1/2-13 HEX NYLON LOCK	F05010-8	4
5	NUT, 3/8-16 HEX JAM	F05010-29	2
6	BOLT, 3/8-16 X 1 1/4" HEX HEAD GRADE 5	F05007-123	2
7	SHAFT, 1" DIA. X 23 1/2" PIVOT	007149	1
	<b>ARM ASSEMBLY, RESAW HOLD-DOWN</b>	007146	1
8	Arm Weldment, Resaw Hold-Down	007285	1
9	Fitting, 3/16" x 3/16" Straight Grease	P04107	2
10	Roller Weldment, Resaw Hold-Down	007288	1
11	Bushing, 1" ID x 1 1/4" OD x 1 1/4" Flanged	P109	2
12	Washer, 3/8" SAE Flat	F05011-3	2
13	Washer, 3/8" Split Lock	F05011-4	2
14	Bolt, 3/8-16 x 1 1/4" Hex Head Grade 5	F05007-123	2
15	Shaft, Resaw Hold-Down Roller	059402	1
16	<b>COLLAR, HOLD-DOWN ROLLER LOCKING</b>	007148	1
17	<b>SCREW, 5/16-18 X 5/16" CUP POINT SOCKET SET</b>	F05006-6	1

## 2.3 Feed Drive Assembly

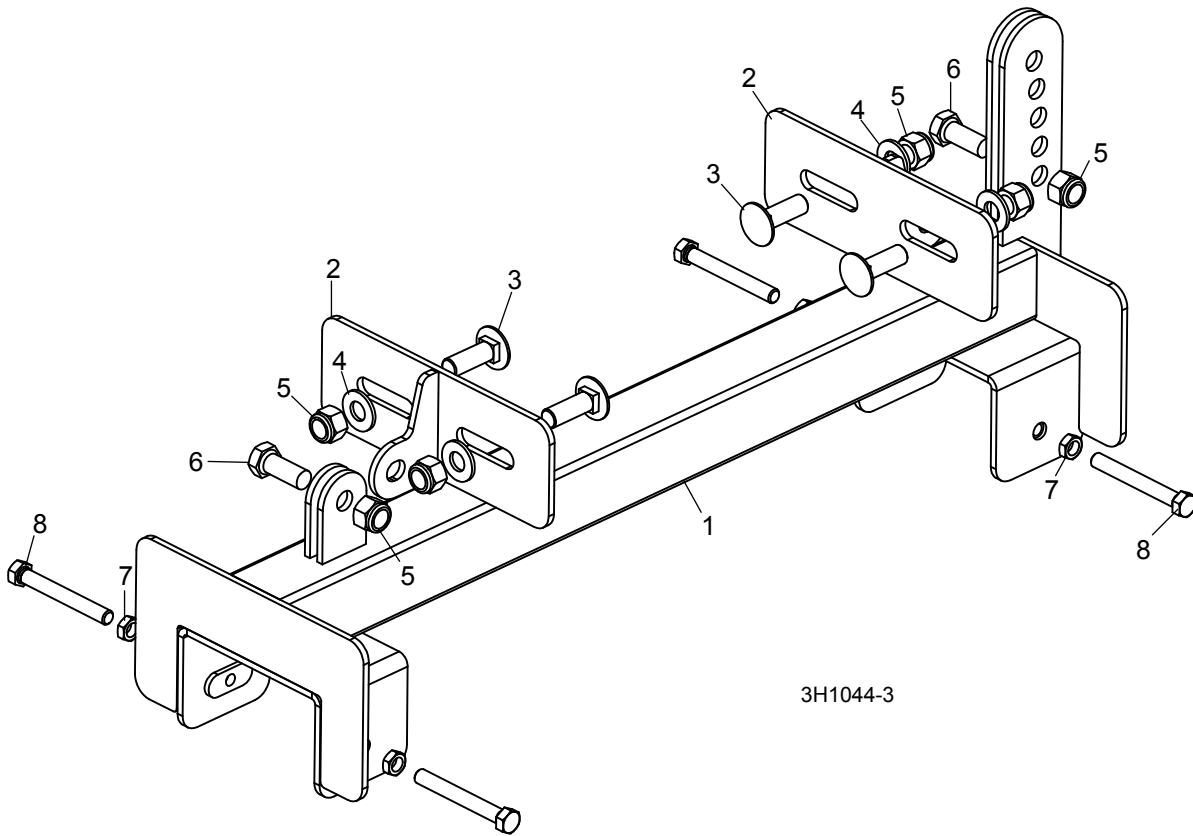


REF	DESCRIPTION (◆ Indicates Parts Available In Assemblies Only)	PART #	QTY.
1	PULLEY, 3" X 20" LAGGED DRUM	059358	1
2	PLATE, CONVEYOR END ADJUSTMENT	059356	2
3	PLATE, 1/4" X 6/8" X 4" SPACER SLIDE	007139	2
4	PLATE, DRIVE PULLEY SLIDE ADJUSTMENT	007140	2
5	BOLT, 3/8-16 X 1 1/4" CARRIAGE HEAD GRADE 5	F05007-127	8
6	WASHER, 3/8" SAE FLAT	F05011-3	6
7	NUT, 3/8-16 HEX NYLON LOCK	F05010-10	12
8	BOLT, 3/8-16 X 5 1/2" HEX HEAD FULL THREAD	F05007-34	2
9	WASHER, 3/8" SPLIT LOCK	F05011-4	2
10	NUT, 3/8-16 HEX	F05010-1	4
11	SPROCKET, 40B16 X 1" BORE	007311	1
12	KEY, 1/4" SQUARE X 3/4"	S03167	1
13	CHAIN, #40 X 16 1/2"	007446	1
14	LINK, #40 MASTER	P04200	1
15	SPROCKET, 40B12 X 3/4" BORE	101795	1
16	MOTOR ASSEMBLY, RS2 FEED	008910	1
	Brush Kit, Klauber 33:1 Gearmotor Endbell	065182	1
17	BRACKET WELDMENT, RS2 MOTOR MOUNT	007424	1
18	WASHER, 5/16" SAE FLAT	F05011-17	4

**2****Replacement Parts***Feed Drive Assembly*

19	WASHER, 5/16" SPLIT LOCK	F05011-13	4	
20	BOLT, 5/16-18 X 3/4" HEX HEAD	F05006-5	4	
21	COVER, RS2 FEED MOTOR	007145	1	
22	WASHER, 1/4" SAE FLAT	F05011-11	4	
23	WASHER, 1/4" SPLIT LOCK	F05011-14	4	
24	BOLT, 1/4-20 X 3/4" HEX HEAD FULL THREAD	F05005-1	4	
25	BEARING, VF4S-216 FLANGED	014090	2	
26	BOLT, 3/8-16 X 1 1/2" CARRIAGE HEAD	F05007-85	4	
27	DECAL, MOVING PARTS DANGER	028720	1	
28	HARNESS ASSEMBLY, RESAW POWER	008902	1	
29	SCREW, 1/4-20 X 3/8" PHILLIPS PAN HEAD	F05005-17	2	
30	NUT, 1/4-20 SELF-LOCKING HEX	F05010-9	2	
31	TUBING, 1/2" ID X 5/8" OD NORPRENE	R02348	.5 ft.	
32	WIRE TIE, 5/16" X 15"	F05089-5	2	
33	WIRE TIE, .100" X 4"	F05089-6	1	
34	WIRE TIE, 3/16" X 6"	F05089-3	1	

## 2.4 Frame Mount Assembly



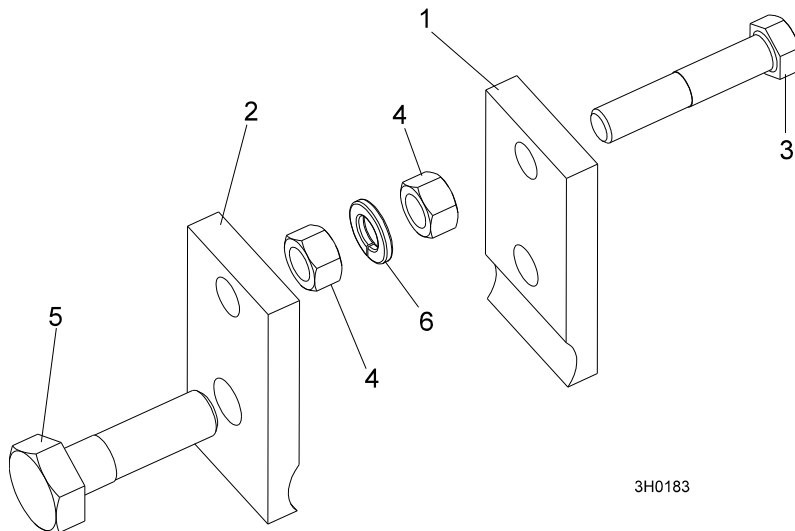
3H1044-3

REF	DESCRIPTION (◆ Indicates Parts Available In Assemblies Only)	PART #	QTY.
1	MOUNT WELDMENT, RS2 FRAME	059396	2
2	BRACKET WELDMENT, RS2 FRAME PIVOT	007442	4
3	BOLT, 1/2-13 X 1 1/2" CARRIAGE HEAD	F05008-150	8
4	WASHER, 1/2" SAE FLAT	F05011-2	8
5	NUT, 1/2-13 HEX NYLON LOCK	F05010-8	12
6	BOLT, 1/2-13 X 1 1/4" HEX HEAD GRADE 5	F05008-37	4
7	NUT, 3/8-16 HEX JAM	F05010-29	8
8	BOLT, 3/8-16 X 3" HEX HEAD FULL THREAD	F05007-1	8

## 2 Replacement Parts

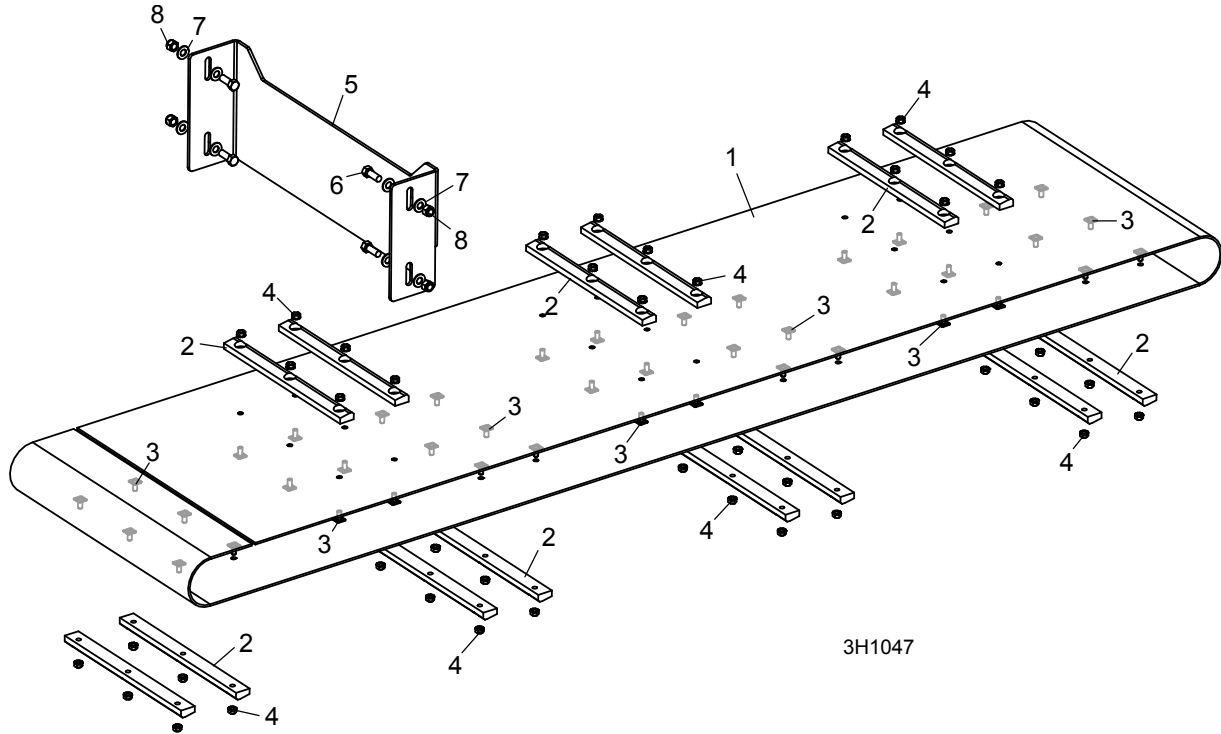
### Resaw Clamp Assembly

## 2.5 Resaw Clamp Assembly



REF	DESCRIPTION (◆ Indicates Parts Available In Assemblies Only)	PART #	QTY.	
	<b>CLAMP ASSEMBLY, SAWMILL CARRIAGE LOCKING</b>	A08865	2	
1	Plate, Carriage Locking Clamp Left	S08866	1	◆
2	Plate, Carriage Locking Clamp Right	S08867	1	◆
3	Bolt, 3/8-16 X 2" Hex Head Full Thread	F05007-16	1	
4	Nut, 3/8-16 Hex	F05010-1	2	
5	Bolt, 1/2-20 X 1 3/4" Hex Head Grade 5	F05008-49	1	
6	Washer, 3/8" Split Lock	F05011-4	1	

## 2.6 Shingle Belt Assembly (Optional)



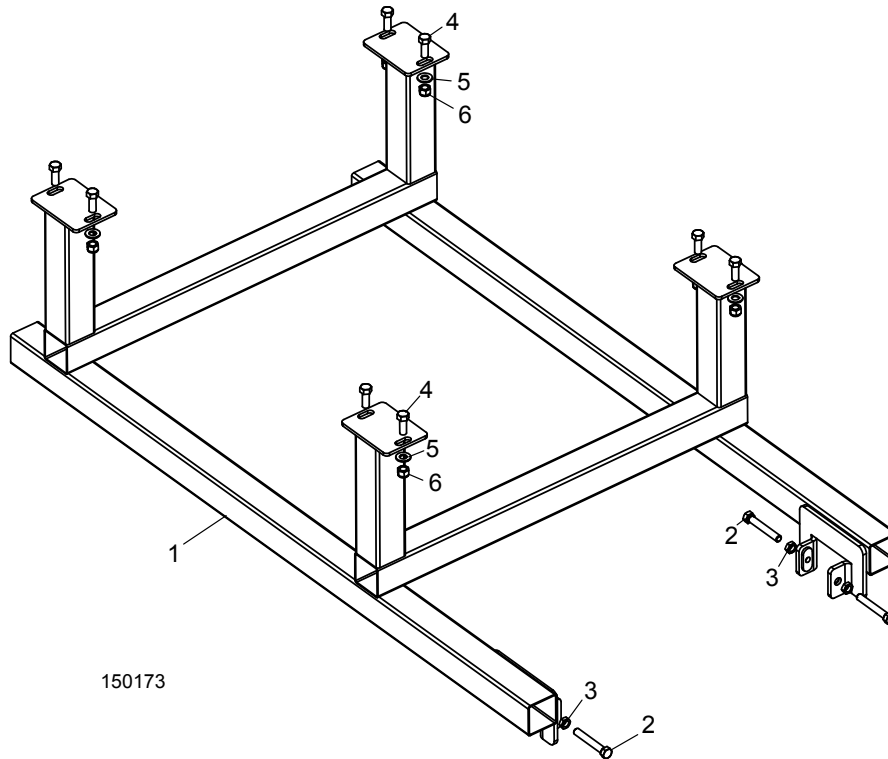
REF	DESCRIPTION (◆ Indicates Parts Available In Assemblies Only)	PART #	QTY.
	<b>BELT ASSEMBLY, RS2 SHINGLE</b>	RS2-SB	1
1	Belt, 18" Resaw Shingle	007318	1
2	Block, Shingle Catch	059366	14
3	Stud, 1/4-20 x 1/2" Base Plate	007616	42
4	Nut, 1/4-20 Self-Locking Hex	F05010-9	42
5	Plate, Shingle Stop	007277	1
6	Bolt, 3/8-16 x 1" Hex Head	F05007-7	4
7	Washer, 3/8" SAE Flat	F05011-3	8
8	Nut, 3/8-16 Hex Nylon Lock	F05010-10	4



## 2 Replacement Parts

### LT15 Stand Mount

## 2.7 LT15 Stand Mount



REF	DESCRIPTION (◆ Indicates Parts Available In Assemblies Only)	PART #	QTY.
	<b>STAND ASSEMBLY, RS2 LT15 MOUNT</b>	RS2-LT15S	1
1	Stand Weldment, RS2 LT15 Mount	007150	1
2	Bolt, 3/8-16 x 2 1/2" Hex Head Full Thread	F05007-157	4
3	Nut, 3/8-16 Hex Jam	F05010-29	4
4	Bolt, 3/8-16 x 1" Hex Head	F05007-7	8
5	Washer, 3/8" SAE Flat	F05011-3	8
6	Nut, 3/8-16 Hex Nylon Lock	F05010-10	8