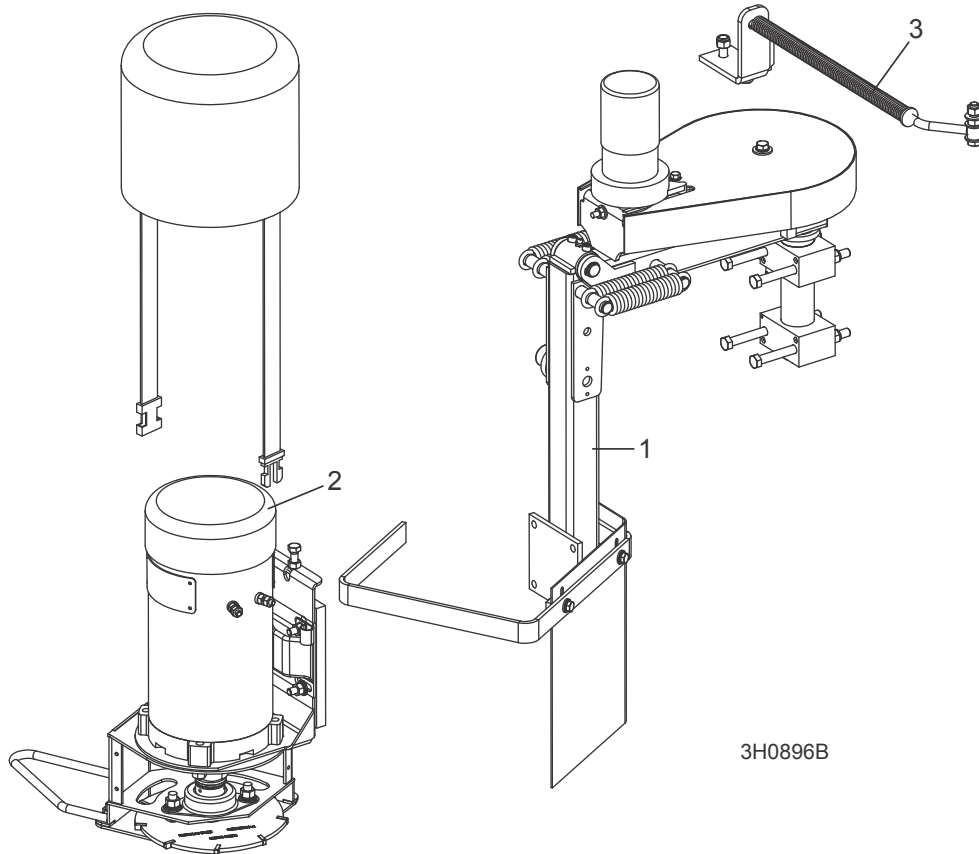


SECTION 6 DEBARKER PARTS

6.1 Mechanical Assembly

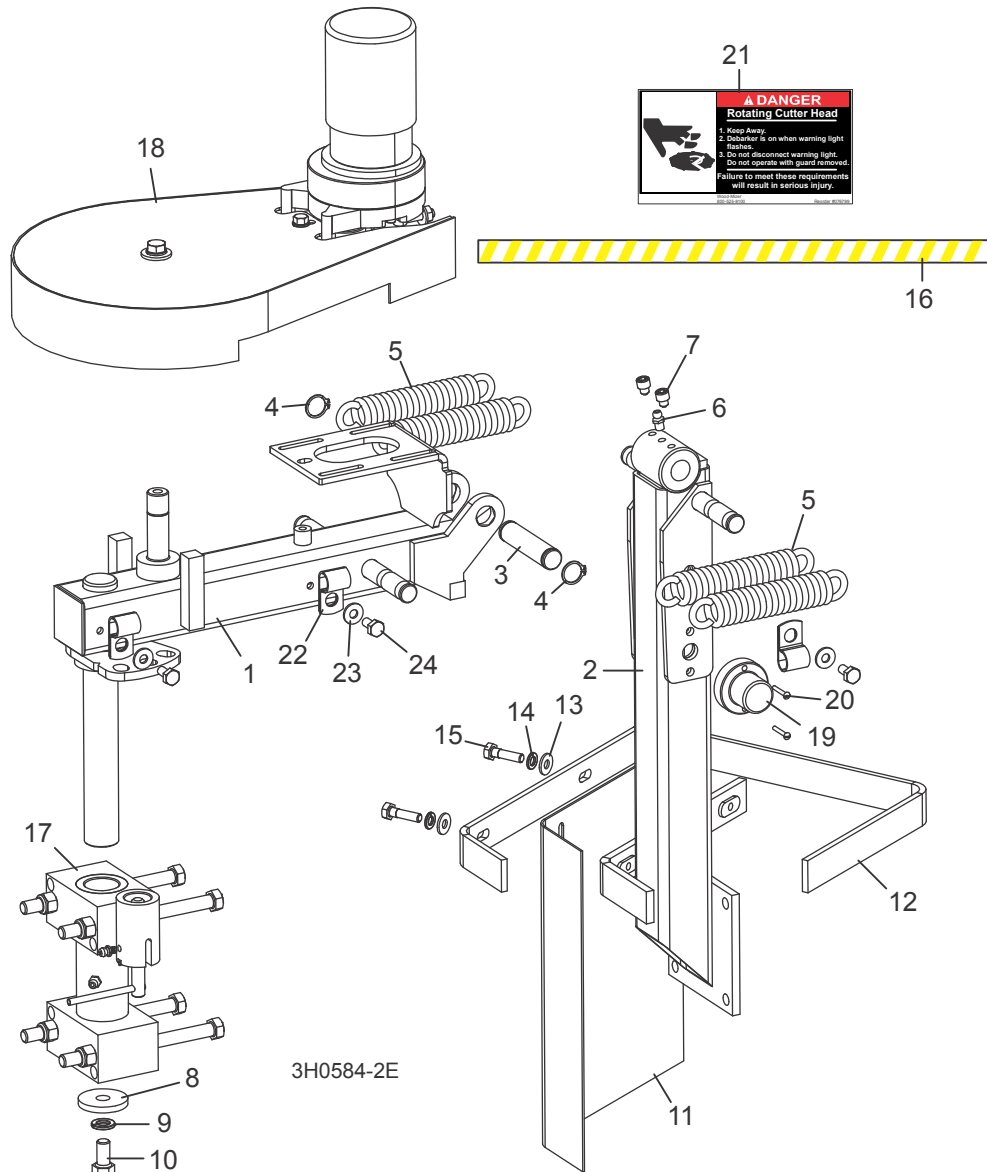


REF	DESCRIPTION (◆ Indicates Parts Available In Assemblies Only)	PART #	QTY.
For field installation of existing sawmills, order the mechanical assembly below plus the appropriate control kit (See Section 6.10):			
	MECHANICAL ASSEMBLY, MKII DEBARKER	023617	1
1	Frame Parts (See Section 6.2)		
2	Cutter Head Parts (See Section 6.5)		
3	Spring Rod Parts (See Section 6.9)		

6 Debarker Parts

Frame Assembly

6.2 Frame Assembly

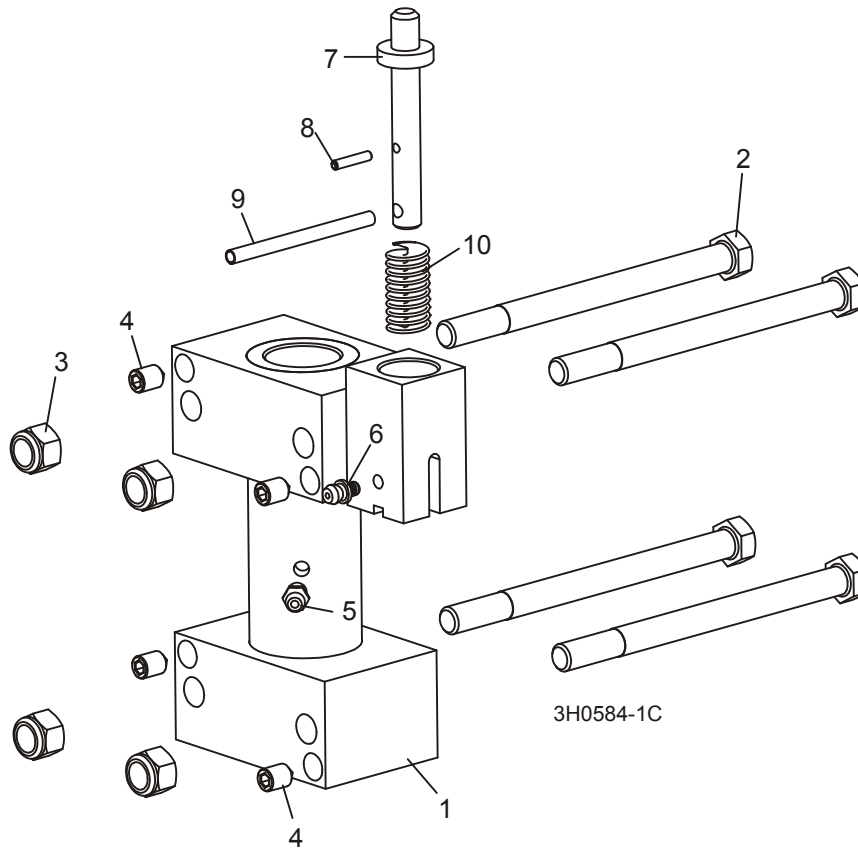


REF	DESCRIPTION (◆ Indicates Parts Available In Assemblies Only)	PART #	QTY.
	FRAME ASSEMBLY, MKII DEBARKER	023619	1
1	Arm Weldment, Debarker Upper	023641 ¹	1
2	Arm Weldment, Debarker Lower	023613	1
3	Pin, Debarker Frame Pivot	023646	1
4	Ring, 5/8" 5100-62 Outer Retaining	F04254-2	2
5	Spring, Debarker Arm	021185	4
6	Fitting, 1/4-28 Grease	P05060	1

7	Screw, 1/4-28 x 1/4" Socket Head	F05005-106	2	
8	Washer, .40 x 1.44 x .18	021276	1	
9	Washer, 3/8" Split Lock	F05011-4	1	
10	Bolt, 3/8-16 x 3/4" Hex Head Grade 2	F05007-27	1	
11	Guard, Debarker Flexible Debris	021232	1	
12	Guard, Debarker Wrap-Around	021231	1	
13	Washer, 1/4" SAE Flat	F05011-11	2	
14	Washer, 1/4" Split Lock	F05011-14	2	
15	Bolt, 1/4-20 x 1" Hex Head Grade 2	F05005-38	2	
16	Decal, Debarker Guard	015849	1	
17	Mount Parts (See Section 6.3)			
18	In/Out Motor Parts (See Section 6.4)			
19	Lamp Assembly, 180 Degree Amber Strobe	073555	1	
20	Bolt, 4-40x3/4 S	F05004-13	2	
21	Decal, Debarker Light Warning	076799	2	
22	CLAMP, 1/2" EMT COATED	P07584	3	
23	WASHER, 1/4" SAE FLAT	F05011-11	3	
24	BOLT, 1/4-20 X 1/2" HEX HEAD	F05005-15	3	

¹ Middle locking pin hole added to store Debarker in travel position if SLR or RS option mounted on sawmill bed (Rev. C.04).

6.3 Mount/Lock Pin Assembly

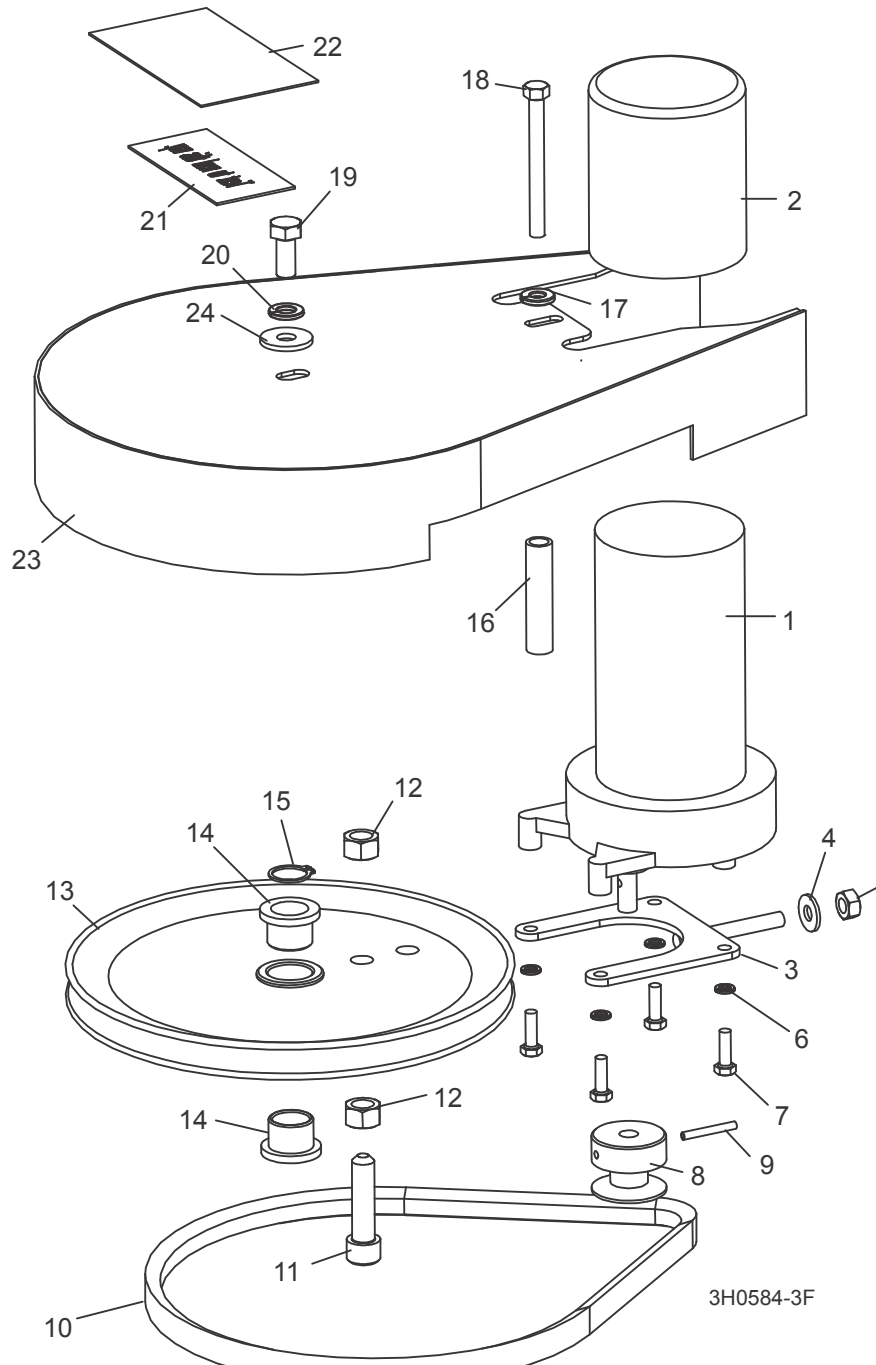


REF	DESCRIPTION (◆ Indicates Parts Available In Assemblies Only)	PART #	QTY.	
	PIVOT KIT, DEBARKER MOUNT	021284	1	
1	Mount Weldment, Debarker Frame Pivot	021282	1	◆
2	Bolt, 3/8-16 x 5" Hex Head	F05007-5	4	
3	Nut, 3/8-16 Hex Nylon Lock	F05010-10	4	
4	Screw, 5/16-24 x 1/2" Cone Point Socket Set	F05006-96	4	
5	Fitting, 1/4-28 Grease	P05060	1	
6	Fitting, 3/16" x 3/16" Straight Grease	P04107 ¹	1	
7	PIN, DEBARKER LOCK	023650	1	
8	PIN, 1/8" X 1" ROLL	F05012-34 ²	1	
9	PIN, 3/16" X 2 1/2" ROLL	F05012-27	1	
10	SPRING, .58" OD X 1 1/8" LONG COMPRESSION	021243	1	

¹ Grease fitting added to travel pin block 11/07.

² 1" Roll Pin F05012-34 replaces 5/8" Roll Pin F05012-14 for easier assembly (4/08).

6.4 In/Out Motor Drive Assembly



REF	DESCRIPTION (◆ Indicates Parts Available In Assemblies Only)	PART #	QTY.
1	MOTOR, CURRENT APPLICATIONS 1/30HP 12VDC GEAR	079214 ¹	1
	Gear Kit, Gear Motor Replacement	061232	1

6

Debarker Parts*In/Out Motor Drive Assembly*

	Brush Kit, Gear Motor Replacement	061234	1	
	Shaft Kit, Gear Motor Replacement	061233	1	
2	BOOT, GEAR MOTOR WEATHER	023720	1	
3	TENSIONER WELDMENT, GEAR MOTOR	023637	1	
4	WASHER, 1/4" SAE FLAT	F05011-11	1	
5	NUT, 1/4-20 HEX LOCK	F05010-21	1	
6	WASHER, #10 SPLIT LOCK	F05011-20	4	
7	BOLT, #10-32 X 5/8" HEX HEAD	F05004-152	4	
8	PULLEY, DEBARKER IN/OUT MOTOR	016181 ²	1	
9	PIN, 1/8" X 1" ROLL	F05012-34 ²	1	
10	BELT, 4L280	P04031	1	
11	BOLT, 3/8-16 X 1 1/2" SOCKET HEAD	F05007-36	1	
12	NUT, 3/8-16 HEX LOCK	F05010-25	2	
13	PULLEY, DEBARKER IN/OUT DRIVE	023634	1	
14	BUSHING, FLANGED BRONZE	021203	2	
15	RING, 5/8" 5100-62 OUTSIDE RETAINING	F04254-2	1	
16	SPACER, 5/16" ID X 7/16" OD X 1 15/16" LONG	014424	1	
17	WASHER, 1/4" SPLIT LOCK	F05011-14	1	
18	BOLT, 1/4-20 X 2 1/2" HEX HEAD	F05005-7	1	
19	BOLT, 5/16-18 X 3/4" HEX HEAD GRADE 2	F05006-5	1	
20	WASHER, 5/16" SPLIT LOCK	F05011-13	1	
21	DECAL, DEBARKER REVISION	016187	1	
22	OVERLAY, REVISION DECAL	016200	1	
23	GUARD WELDMENT, DEBARKER PULLEY	023649	1	
24	WASHER, 5/16" STANDARD FLAT	F05011-16 ³	1	

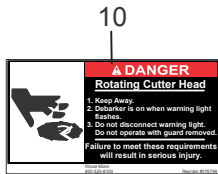
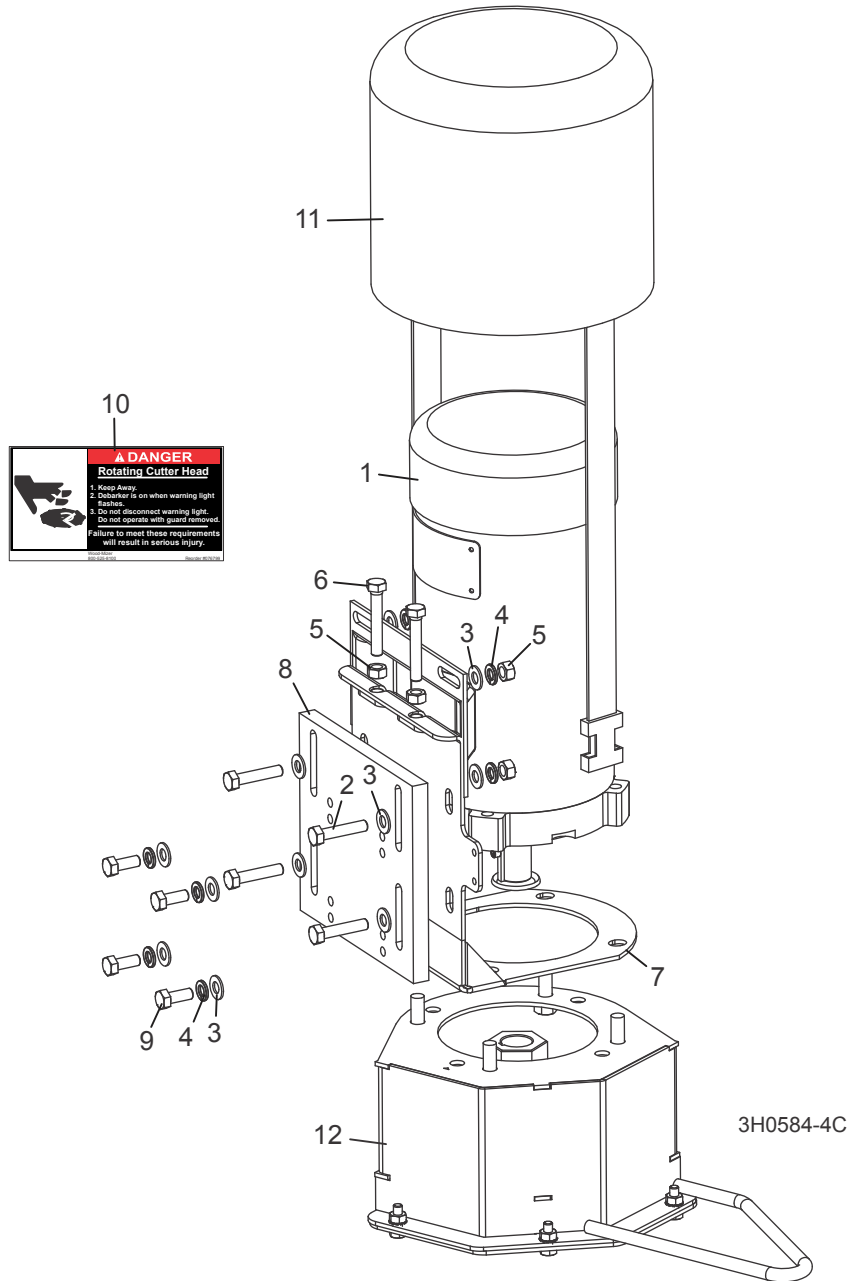
¹ Replaced P09698-1 1/30 HP 62RPM 12VDC 53:1 Gear Motor with P12756 End Housing, P12569 Gear Kit, P12800 Brush Kit and 009695 Shaft Kit (Rev. C.06).

² Gear Motor Pulley 016181 and Roll Pin F05012-34 replace Gear Motor Pulley 021190 with 1/4-20 x 3/8" Cup Point Set Screw F05005-47 originally supplied prior to Rev. C.01. Roll pin required to install new pulley to older revision Debarkers.

³ Added 2/10 to cover slot to prevent moisture entering guard.

6.5 Blade Motor Assembly

Rev. C.05+



REF	DESCRIPTION (◆ Indicates Parts Available In Assemblies Only)	PART #	QTY.
	HEAD ASSEMBLY, MKII DEBARKER CUTTING	023618	1
1	Motor, 3/4HP 12VDC TEFC Electric (7/8" Dia. Shaft)	023688 ¹	1
	Motor, 3/4HP 12VDC TEFC Electric (5/8" Dia. Shaft)	015174 ¹	1
	Brush Kit, Leeson 3/4HP Motor (Includes 2 Brushes and 2 Springs)	024167	1
	Fan, 3/4 HP Leeson Motor Replacement	016087	1

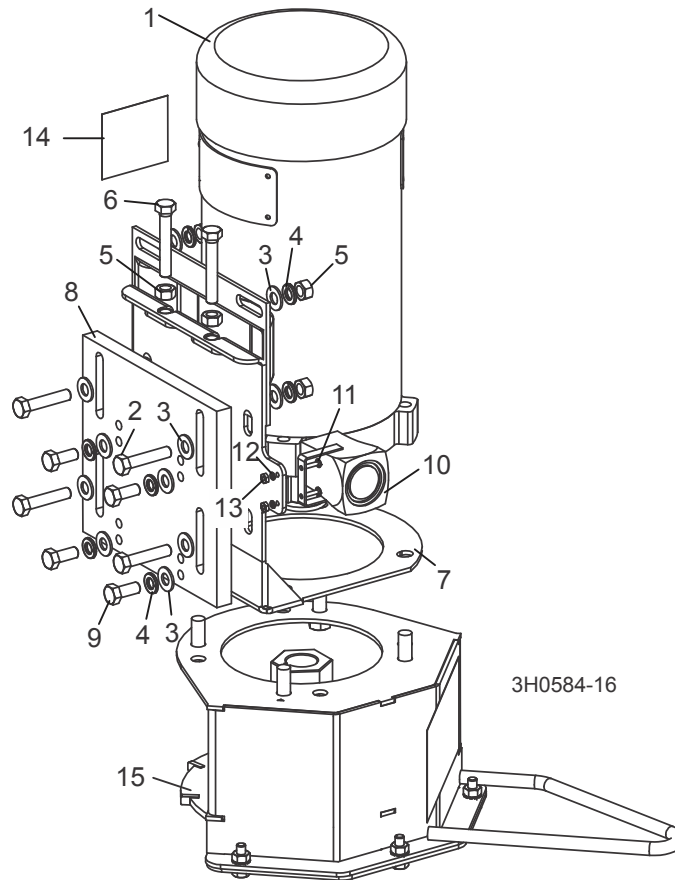
6**Debarker Parts***Blade Motor Assembly*

	Guard, Motor Fan	047998	1	
	Key, 3/16" Square x 1 3/8" Long	016108	1	
2	Bolt, 5/16-18 x 1 1/2" Hex Head Full Thread	F05006-2	4	
3	Washer, 5/16" SAE Flat	F05011-17	8	
4	Washer, 5/16" Split Lock	F05011-13	8	
5	Nut, 5/16-18 Hex	F05010-17	6	
6	Bolt, 5/16-18 x 2" Hex Head Full Thread	F05006-13	2	
7	Bracket Weldment, Debarker Blade Motor Adjustable	023622	1	
8	Plate, Debarker Blade Motor Mount	023620	1	
9	Bolt, 5/16-18 x 3/4" Hex Head Grade 2	F05006-5	4	
10	Decal, Debarker Light Warning	076799	1	
11	Cover, 3/4HP Leeson Motor	015761	1	
12	Blade/Mandrel Parts (See Section 6.7)			

¹ 023688 Motor with 7/8" shaft replaces 015174 Motor with 5/8" dia. shaft (Rev. B.00). To upgrade Rev. A.00 Debarker with new motor requires new mandrel ([See Section 6.7](#)).

6.6 Blade Motor Assembly

Rev. A.00 - C.04



REF	DESCRIPTION (◆ Indicates Parts Available In Assemblies Only)	PART #	QTY.
	HEAD ASSEMBLY, MKII DEBARKER CUTTING	023618	1
1	Motor, 3/4HP 12VDC TEFC Electric (7/8" Dia. Shaft)	023688 ¹	1
	Motor, 3/4HP 12VDC TEFC Electric (5/8" Dia. Shaft)	015174 ¹	1
	Brush Kit, Leeson 3/4HP Motor (Includes 2 Brushes and 2 Springs)	024167	1
	Fan, 3/4 HP Leeson Motor Replacement	016087	1
	Guard, Motor Fan	047998	1
	Key, 3/16" Square x 1 3/8" Long	016108	1
2	Bolt, 5/16-18 x 1 1/2" Hex Head Full Thread	F05006-2	4
3	Washer, 5/16" SAE Flat	F05011-17	8
4	Washer, 5/16" Split Lock	F05011-13	8
5	Nut, 5/16-18 Hex	F05010-17	6
6	Bolt, 5/16-18 x 2" Hex Head Full Thread	F05006-13	2
7	Bracket Weldment, Debarker Blade Motor Adjustable	023622	1
8	Plate, Debarker Blade Motor Mount	023620	1
9	Bolt, 5/16-18 x 3/4" Hex Head Grade 2	F05006-5	4
10	Horn, 12V DC	021137	1

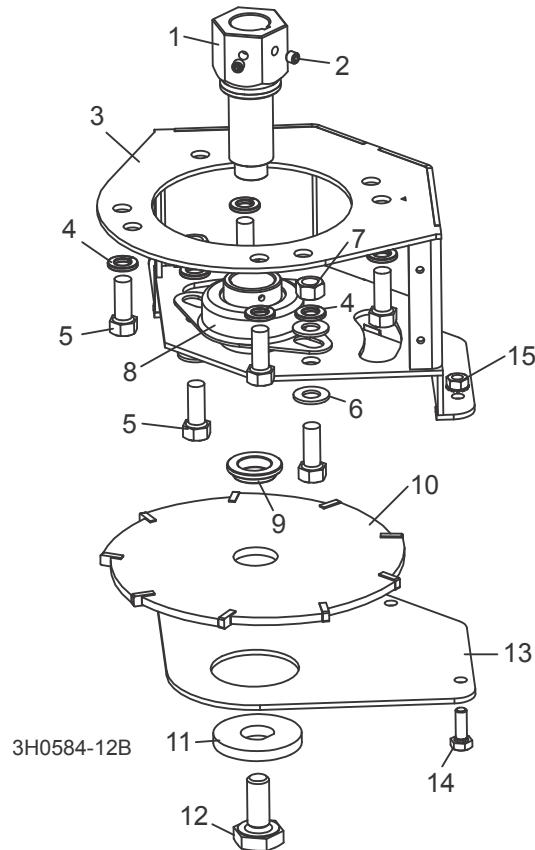
6**Debarker Parts***Blade Motor Assembly*

11	Screw, 4-40x1/2 Sl Rnd Head Machine	F05004-14	2	
12	Washer, #4 Split Lock	F05011-21	2	
13	Nut, #4-40 Hex	F05010-43	2	
14	Decal, Disconnect Motor Leads Warning	024431	1	
15	Blade/Mandrel Parts (See Section 6.7)			

¹ 023688 Motor with 7/8" shaft replaces 015174 Motor with 5/8" dia. shaft (Rev. B.00). To upgrade Rev. A.00 Debarker with new motor requires new mandrel ([See Section 6.7](#)).

6.7 Blade Housing Assembly

Rev. C.00+



REF	DESCRIPTION (◆ Indicates Parts Available In Assemblies Only)	PART #	QTY.
1	MANDREL, DEBARKER BLADE (7/8" DIA.)	016122 ¹	1
2	SCREW, 1/4-28 X 1/4" CUP POINT SOCKET SET	F05005-105	2
3	HOUSING WELDMENT, DEBARKER BLADE	023628 ²	1
4	WASHER, 3/8" SPLIT LOCK	F05011-4	6
5	BOLT, 3/8-16 X 1" HEX HEAD	F05007-7	6
6	WASHER, 3/8" SAE FLAT	F05011-3	4
7	NUT, 3/8-16 HEX	F05010-1	2
8	BEARING, 1" FLANGED MOUNT	023541	1
9	BUSHING, DEBARKER BLADE SPACER	023632	1
10	BLADE, DEBARKER 7" DIA.	021236	1
	BLADE, DEBARKER 7" DIA. W/1/2" INSERTS (OPTIONAL - PURCHASED SEPARATELY)	065852	1
11	WASHER, DEBARKER BLADE LOCK	023737 ¹	1
12	BOLT, 1/2-20 X 1 1/4" HEX HEAD SPECIAL	023547 ³	1

6**Debarker Parts***Blade Housing Assembly*

13	PLATE, DEBARKER BLADE HOUSING BOTTOM	023629	1	
14	BOLT, 1/4-20 X 3/4" HEX HEAD FULL THREAD	F05005-1	3	
15	NUT, 1/4-20 SELF-LOCKING HEX	F05010-9	3	

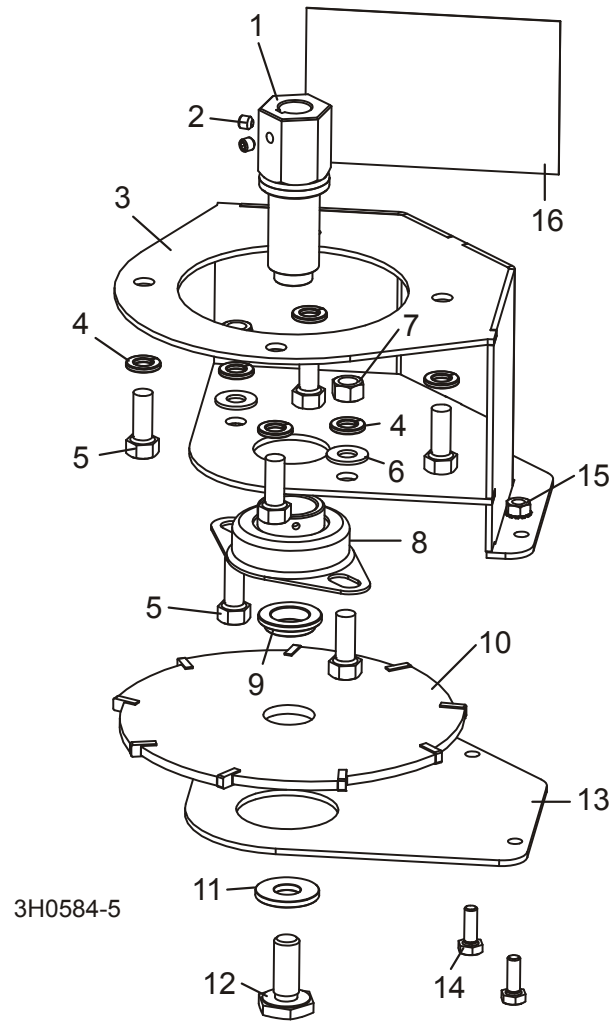
¹ Mandrel and washer with "D"-shaped hole used to prevent slippage (Rev. C.00).

² Housing weldment modified to accept CE guards required in Europe (Rev. C.00).

³ Radius added to blade bolt 023547 to prevent damage caused by over-torquing of the bolt (Rev. C.00).

6.8 Blade Housing Assembly

Rev. A.00 - B.00



REF	DESCRIPTION (◆ Indicates Parts Available In Assemblies Only)	PART #	QTY.	
1	MANDREL, DEBARKER BLADE (7/8" DIA.)	023689 ¹	1	◆
	MANDREL, DEBARKER BLADE (5/8" DIA.)	021385 ¹	1	
2	SCREW, 1/4-28 X 1/4" CUP POINT SOCKET SET	F05005-105	2	
3	HOUSING WELDMENT, DEBARKER BLADE	023628	1	
4	WASHER, 3/8" SPLIT LOCK	F05011-4	6	
5	BOLT, 3/8-16 X 1" HEX HEAD	F05007-7	6	
6	WASHER, 3/8" SAE FLAT	F05011-3	2	
7	NUT, 3/8-16 HEX	F05010-1	2	
8	BEARING, 1" FLANGED MOUNT	023541	1	
9	BUSHING, DEBARKER BLADE SPACER	023632	1	

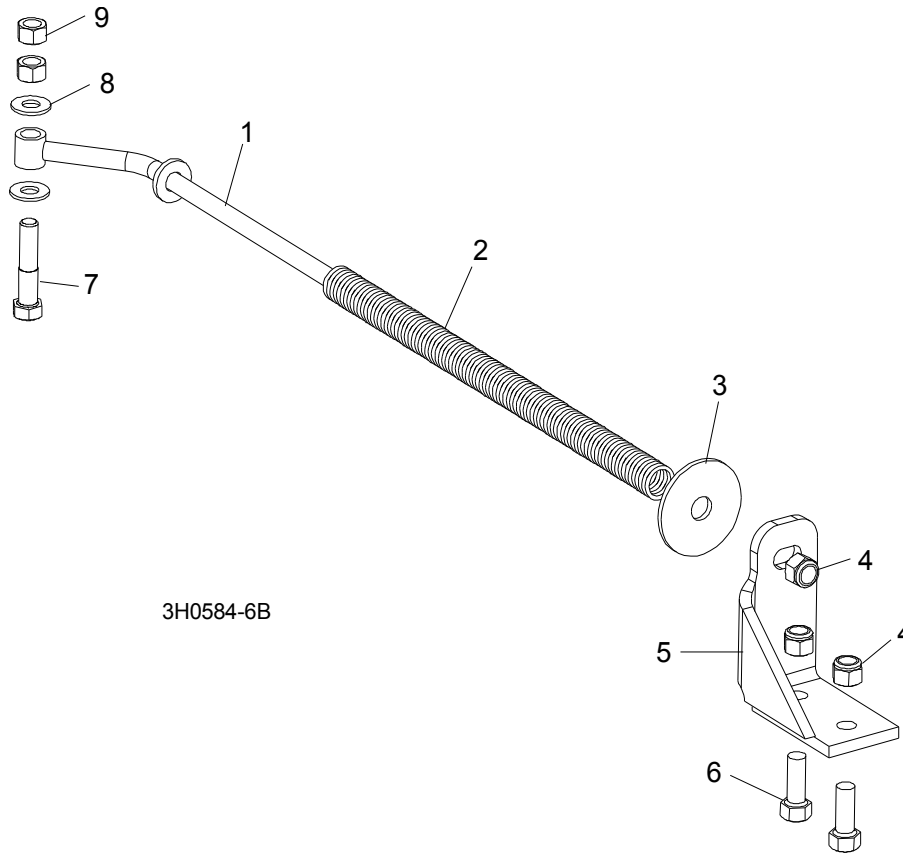
6

Debarker Parts*Blade Housing Assembly*

10	BLADE, DEBARKER 7" DIA.	021236	1	
	BLADE, DEBARKER 7" DIA. W/1/2" INSERTS (OPTIONAL - PURCHASED SEPARATELY)	065852	1	
11	WASHER, DEBARKER BLADE RETAINING	023633	1	
12	BOLT, 1/2-20 X 1 1/4" HEX HEAD SPECIAL	023547	1	
13	PLATE, DEBARKER BLADE HOUSING BOTTOM	023629	1	
14	BOLT, 1/4-20 X 3/4" HEX HEAD FULL THREAD	F05005-1	3	
15	NUT, 1/4-20 SELF-LOCKING HEX	F05010-9	3	
16	DECAL, DEBARKER HORN DANGER	021172	1	

¹ 023689 7/8" Mandrel obsolete. Replace all 7/8" mandrels with 016122 mandrel and 023737 washer with "D"-shaped hole to prevent slippage ([See Section 6.7](#)). Use 021385 5/8" Mandrel with 015174 motor supplied with Rev. A.00 Debarkers.

6.9 Spring Rod Assembly



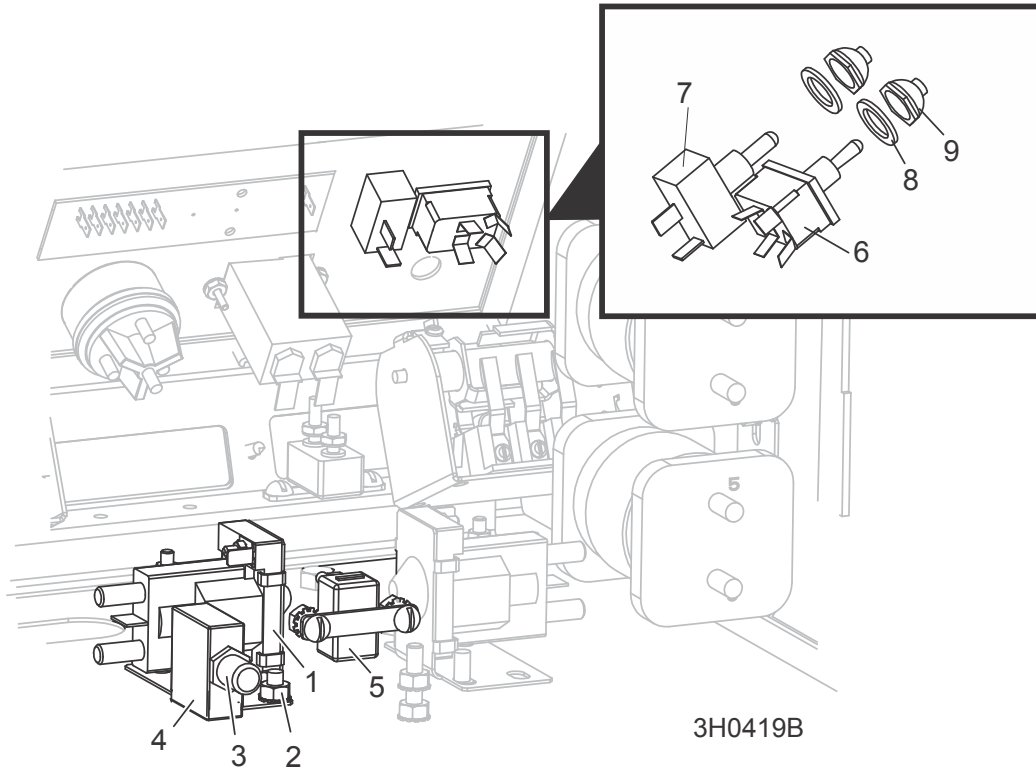
REF	DESCRIPTION (◆ Indicates Parts Available In Assemblies Only)	PART #	QTY.
1	ROD ASSEMBLY, DEBARKER SPRING	016182 ¹	1
1	Rod Weldment, Debarker Spring	021179	1
2	Spring, Debarker Compression	023631	1
3	Washer, 1/2" ID x 2" OD Fender	F05011-38	1
4	Nut, 3/8-16 Nylon Lock	F05010-10	3
5	Bracket, Spring Rod Mount	021180	1
6	Bolt, 3/8-16 x 1" Hex Head	F05007-7	2
7	Bolt, 3/8-16 x 1 3/4" Hex Head Grade 2	F05007-119	1
8	Washer, 3/8" SAE Flat	F05011-3	2
9	Nut, 3/8-16 Hex Lock	F05010-25	2

¹ New subassembly created with Rev. C.01 (10/98).

6

Debarker Parts Debarker Control Assembly

6.10 Debarker Control Assembly



REF	DESCRIPTION (◆ Indicates Parts Available In Assemblies Only)	PART #	QTY.
	CONTROL ASSEMBLY, DEBARKER (NON-REMOTE)	023676	1
	CONTROL ASSEMBLY, DEBARKER (REMOTE)	023677	1
1	Solenoid Kit, Accessory	016372 ¹	1
	Solenoid, 100A 12V Cont. Duty GND	P10449	1 ◆
	Diode Assembly, Solenoid Coil Chassis GND	015426	1
2	Nut, 1/4-20 Self Locking	F05010-9	2
3	Boot, Circuit Breaker	021253	1
4	Breaker, 70 Amp Manual Reset Panel Mount	015527	1
5	Breaker, 15 Amp Manual Reset	E20430	1
6	Switch, DPDT Toggle Return Center Screw Terminal	024200	1
7	Switch, SPST Toggle Quick Connect	P03027	1
8	Washer, 1/2 x 3/4 x 1/16" Nylon	P05251-1	2
9	Boot, Toggle Switch	P02575	2

¹ Solenoid Kit 016372 replaces Solenoid P10449. Kit includes solenoid and replacement instructions. Diode Wire Assembly 015426 added to Solenoid Kit 016372 (8/04).