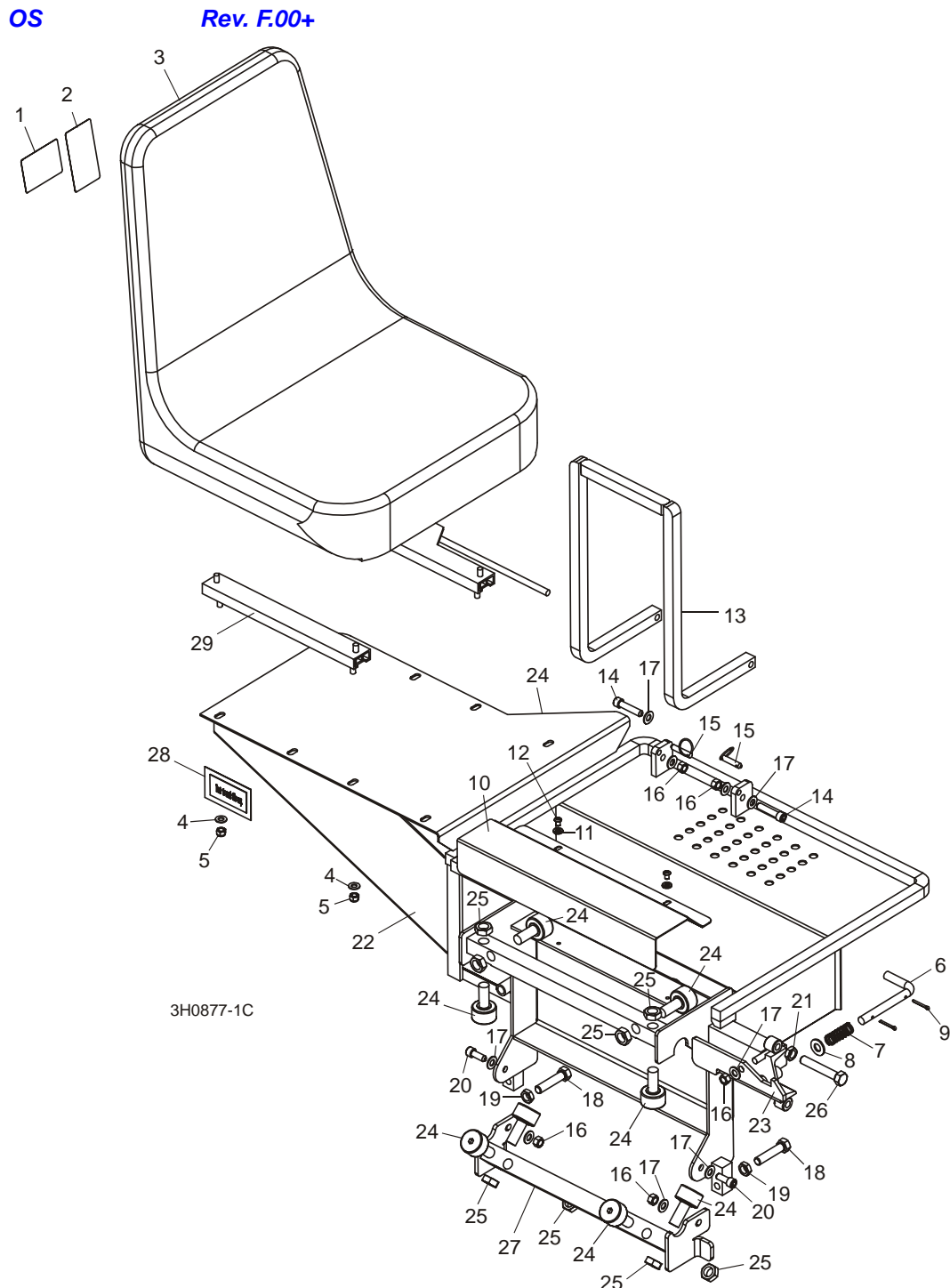


SECTION 2 REPLACEMENT PARTS

2.1 Operator Seat



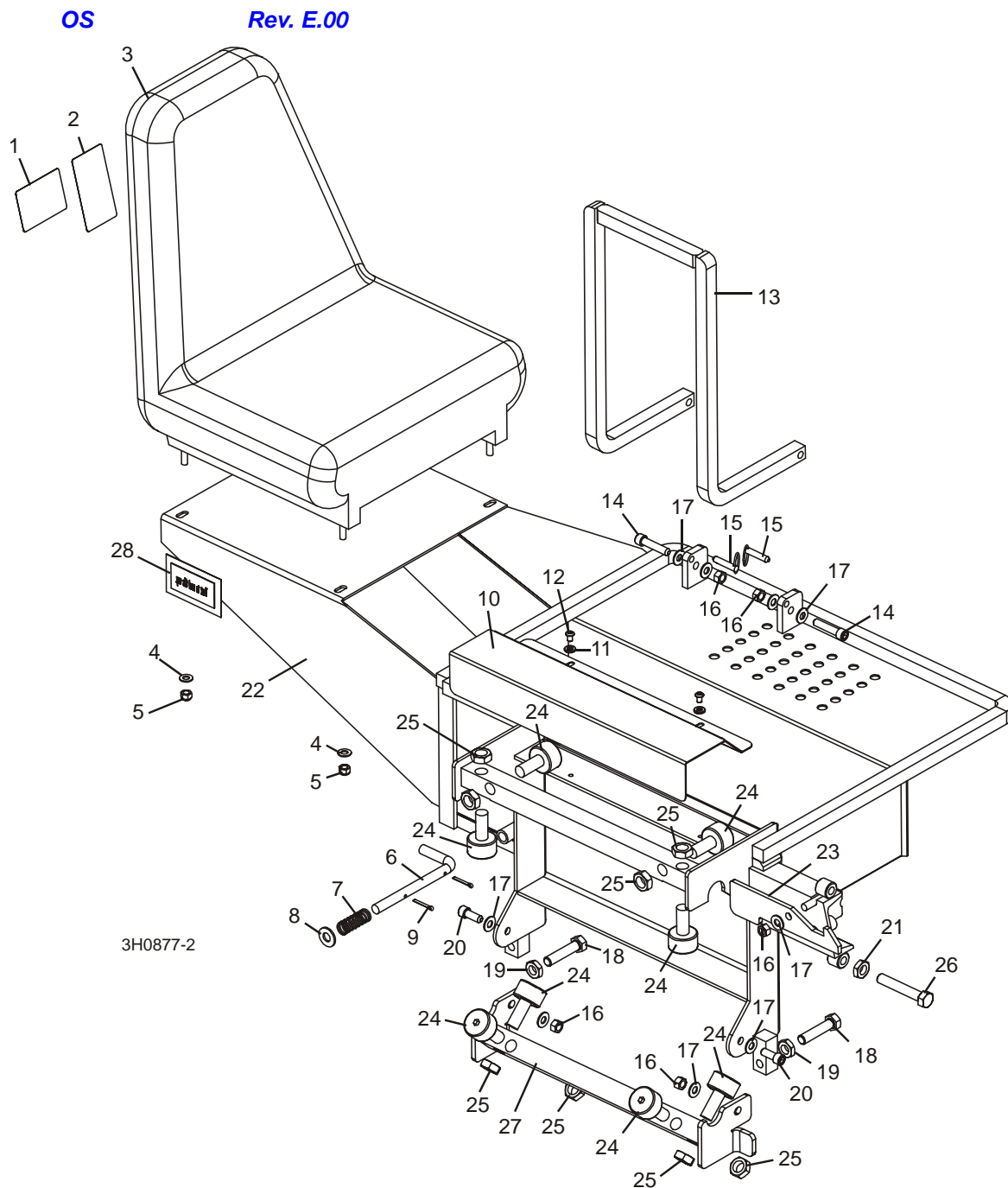
2 Replacement Parts

Operator Seat

REF	DESCRIPTION (◆ Indicates Parts Available In Assemblies Only)	PART #	QTY.	
	OPERATOR SEAT OPTION, LT30/40/60/70 COMPLETE '97	OS	1	
1	Decal, Remove Operator Seat Warning	S12000	1	
2	Decal, 300 Lb. Capacity Caution	S11999	1	
3	Seat, Operator	038719 ¹	1	
4	Washer, 5/16" SAE Flat	F05011-17	4	
5	Nut, 5/16-18 Nylon Lock	F05010-58	4	
	Bag Assembly, Travel Lock Pin	038406		
6	Pin, Operator Seat Travel Lock (Long LT30/40)	038403	1	
	Pin, Operator Seat Travel Lock (Short LT60/70)	038404	1	
7	Spring, Operator Seat Travel Pin	038405	1	
8	Washer, 1/2" SAE Flat	F05011-2	1	
9	Pin, 1/8" X 1" Cotter	F05012-1	2	
10	Guard, OS Bearing	015782	1	
11	Washer, 1/4" Split Lock	F05011-14	2	
12	Screw, 1/4-20 x 3/8" Socket Button Head	F05005-62	2	
13	Step Weldment, OS	014736	1	
14	Screw, 3/8-16 x 1 3/4" Socket Head Cap	F05007-53	2	
15	Pin, 5/16 x 1" Detaining	F05012-45	2	
16	Nut, 3/8-16 Hex Lock	F05010-25	5	
17	Washer, 3/8" SAE Flat	F05011-3	9	
18	Bolt, 1/2-13 x 2 1/4" Hex Head Full Thread	F05008-27	2	
19	Nut, 1/2-13 Jam	F05010-31	2	
20	Screw, 3/8-16 x 1" Socket Head	F05007-52	2	
21	Nut, 1/2-13 Jam	F05010-31	1	
22	Frame Weldment, LT30/40/60/70 97+ Operator Seat	015751	1	◆
23	Latch, Operator Seat (Short)	018010	1	
24	Bearing, Seat Roller	012797	8	
25	Nut, 5/8-18 Hex Jam	F05010-11	8	
26	Bolt, 1/2-13 x 3" Hex Head Full Thread	F05008-7	1	
27	Bar Weldment, Lower Bearing	015942	1	
28	Decal, Operator Seat Revision	016187-OS	1	
29	Adjuster Assembly, Operator Seat (Milsco)	038720 ¹	1	
	Manual, 1997 Operator's Seat Option	M613	1	

¹ Seat 038719 replaces P26206 originally supplied prior to Rev. G.00 (new vendor). Use new adjuster assembly 038720 to service either seat (replaces 036754 originally supplied with old seat).

2.2 Operator Seat



2 Replacement Parts

Operator Seat

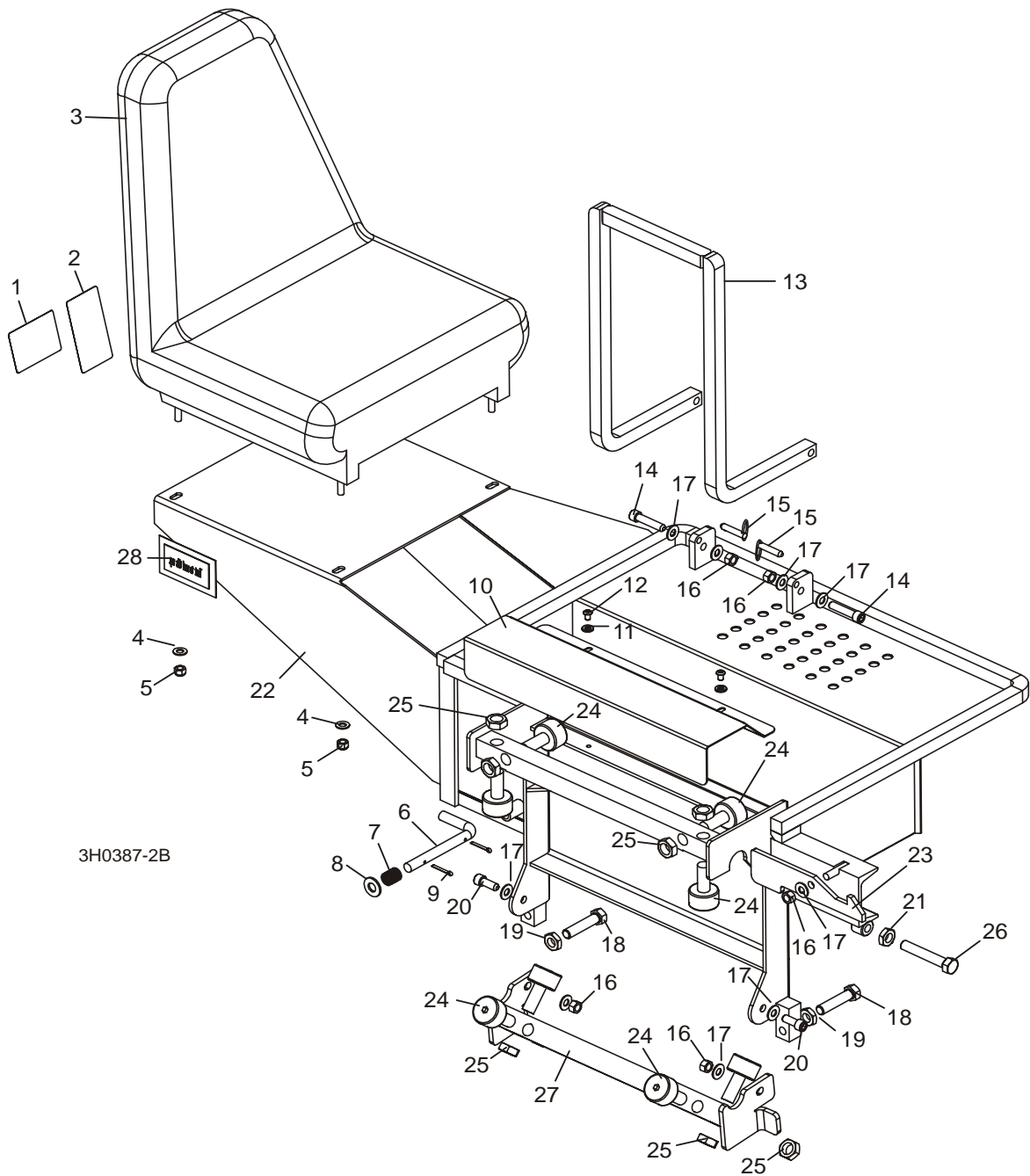
REF	DESCRIPTION (◆ Indicates Parts Available In Assemblies Only)	PART #	QTY.	
	OPERATOR SEAT OPTION, COMPLETE PRE '97	OS ¹	1	
1	Decal, Remove Operator Seat Warning	S12000	1	
2	Decal, 300 Lb. Capacity Caution	S11999	1	
3	Seat, Operator	038719 ²	1	
4	Washer, 5/16" SAE Flat	F05011-17	4	
5	Nut, 5/16-18 Nylon Lock	F05010-58	4	
	Bag Assembly, Travel Lock Pin	038406		
6	Pin, Operator Seat Travel Lock (Long LT30/40)	038403 ¹	1	
	Pin, Operator Seat Travel Lock (Short LT60/70)	038404 ¹	1	
7	Spring, Operator Seat Travel Pin	038405 ¹	1	
8	Washer, 1/2" SAE Flat	F05011-2	1	
9	Pin, 1/8" X 1" Cotter	F05012-1	2	
10	Guard, OS Bearing	015782	1	
11	Washer, 1/4" Split Lock	F05011-14	2	
12	Screw, 1/4-20 x 3/8" Socket Button Head	F05005-62	2	
13	Step Weldment, OS	014736	1	
14	Screw, 3/8-16 x 1 3/4" Socket Head Cap	F05007-53	2	
15	Pin, 5/16 x 1" Detaining	F05012-45	2	
16	Nut, 3/8-16 Hex Lock	F05010-25	5	
17	Washer, 3/8" SAE Flat	F05011-3	9	
18	Bolt, 1/2-13 x 2 1/4" Hex Head Full Thread	F05008-27	2	
19	Nut, 1/2-13 Jam	F05010-31	2	
20	Screw, 3/8-16 x 1" Socket Head	F05007-52	2	
21	Nut, 1/2-13 Jam	F05010-31	1	
22	Frame Weldment, 97+ Operator Seat	015775	1	◆
23	Latch, Operator Seat (Short)	018010	1	
24	Bearing, Seat Roller	012797	8	
25	Nut, 5/8-18 Hex Jam	F05010-11	8	
26	Bolt, 1/2-13 x 3" Hex Head Full Thread	F05008-7	1	
27	Bar Weldment, Lower Bearing	015942	1	
28	Decal, Operator Seat Revision	016187-OS	1	
	Adjuster Assembly, Operator Seat (Milsco)	038720 ²	1	
	Adjuster Assembly, Operator Seat	036754 ²	1	
	Manual, 1997 Operator's Seat Option	M613	1	

¹ Seat frame, travel pin and spring modified to accommodate LT60/70 model sawmills (Rev. E.00).

² Seat 038719 replaces P26206 originally supplied (new vendor). Use new adjuster assembly 038720 to service either seat (replaces 036754 originally supplied with old seat).

2.3 Operator Seat

OS Rev. C.01 - D.05



REF	DESCRIPTION (◆ Indicates Parts Available In Assemblies Only)	PART #	QTY.	
	OPERATOR SEAT OPTION, COMPLETE PRE '97	OS 1	1	
1	Decal, Remove Operator Seat Warning	S12000	1	

2 Replacement Parts

Operator Seat

2	Decal, 300 Lb. Capacity Caution	S11999	1	
3	Seat, Operator	038719 ²	1	
4	Washer, 5/16" SAE Flat	F05011-17	4	
5	Nut, 5/16-18 Nylon Lock	F05010-58	4	
6	Pin, Operator Seat Travel Lock	035403	1	
7	Spring, Operator Seat Travel Pin	035405	1	
8	Washer, 1/2" SAE Flat	F05011-2	1	
9	Pin, 1/8" X 1" Cotter	F05012-1	2	
10	Guard, OS Bearing	015782	1	
11	Washer, 1/4" Split Lock	F05011-14	2	
12	Screw, 1/4-20 x 3/8" Socket Button Head	F05005-62	2	
13	Step Weldment, OS	014736 ³	1	
14	Screw, 3/8-16 x 1 3/4" Socket Head Cap	F05007-53	2	
15	Pin, 5/16 x 1" Detaining	F05012-45	2	
16	Nut, 3/8-16 Hex Lock	F05010-25	5	
17	Washer, 3/8" SAE Flat	F05011-3	9	
18	Bolt, 1/2-13 x 2 1/4" Hex Head Full Thread	F05008-27 ¹	2	
19	Nut, 1/2-13 Jam	F05010-31	2	
20	Screw, 3/8-16 x 1" Socket Head	F05007-52	2	
21	Nut, 1/2-13 Jam	F05010-31	1	
22	Frame Weldment, 97+ Operator Seat	015775 ¹	1	◆
23	Latch, Operator Seat (Short)	018010 ⁴	1	
	Latch, Operator Seat (Long)	S11337 ⁴	1	
24	Bearing, Seat Roller	012797 ⁵	8	
25	Nut, 5/8-18 Hex Jam	F05010-11	8	
26	Bolt, 1/2-13 x 3" Hex Head Full Thread	F05008-7 ⁶	1	
27	Bar Weldment, Lower Bearing	015942 ¹	1	
28	Decal, Operator Seat Revision	016187-OS ⁷	1	
	Manual, 1997 Operator's Seat Option	M613	1	
	Adjuster Assembly, Operator Seat (Milsco)	038720 ²	1	

¹ Seat Frame, Lower Roller Bar and Adjustment Bolts redesigned for easier adjustment (Rev. C.01).

² Seat 038719 replaces P26206 originally supplied (new vendor). Use new adjuster assembly 038720 to service either seat (replaces 036754 originally supplied with old seat).

³ Step relocated to front of seat frame (Rev. D.04). Step moved back to original location (Rev. D.05) to avoid interference with control box.

⁴ Use Short Latch 018010 for Rev. D.00 and later. Use Long Latch S11337 for Rev. A.00 - C.01.

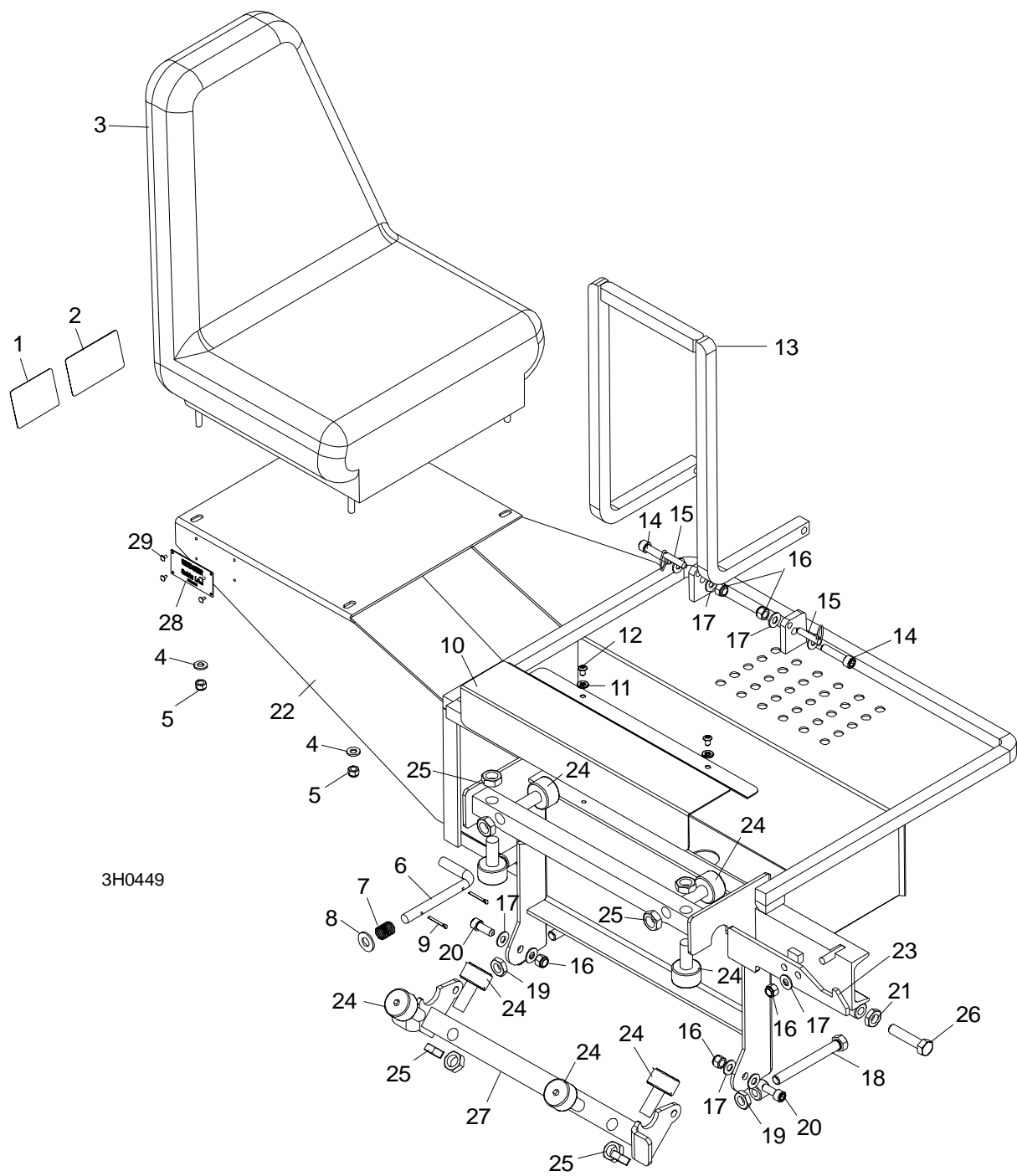
⁵ McGill unit directly replaces P12843 RBC unit originally supplied prior to Rev. D.03.

⁶ Replaces F05008-27 3/8-16 x 2 1/4" bolt originally supplied prior to Rev. C.03. Longer bolt required for sawmills built after 4/99 with new track roller configuration. 3" bolt F05008-7 will work on all OS 1997 seat options.

⁷ Revision decal 016187-OS replaces plate 005801-OS and pop rivets F04203-2 (Rev. D.01).

2.4 Operator Seat

OS Rev. B.00 - B.03



2 Replacement Parts

Operator Seat

REF	DESCRIPTION (◆ Indicates Parts Available In Assemblies Only)	PART #	QTY.	
	OPERATOR SEAT OPTION, COMPLETE '97	OS ¹	1	
1	Decal, Remove Operator Seat Warning	S12000	1	
2	Decal, 300 Lb. Capacity Caution	S11999	1	
3	Seat, Operator	038719 ²	1	
4	Washer, 5/16" SAE Flat	F05011-17	4	
5	Nut, 5/16-18 Nylon Lock	F05010-58	4	
6	Pin, Operator Seat Travel Lock	S11335	1	
7	Spring, Operator Seat Travel Pin	P04282	1	
8	Washer, 1/2" SAE Flat	F05011-2	1	
9	Pin, 1/8" X 1" Cotter	F05012-1	2	
10	Guard, OS Bearing	015782 ³	1	
11	Washer, 1/4" Split Lock	F05011-14	2	
12	Screw, 1/4-20 x 3/8" Socket Button Head	F05005-62	2	
13	Step Weldment, OS	014736	1	
14	Screw, 3/8-16 x 1 3/4" Socket Head Cap	F05007-53	2	
15	Pin, 5/16 x 1" Detaining	F05012-45	2	
16	Nut, 3/8-16 Hex Lock	F05010-25 ⁴	5	
17	Washer, 3/8" SAE Flat	F05011-3	9	
	Bolt Kit, Lower Adjustment Bolt Retrofit	015967 ⁵	1	
18	Bolt, 1/2-13 x 4 1/2" Hex Head Full Thread	F05008-16 ³	2	
	Foot, Operator Seat Lower Adjustment Bolt Extension	015966	2	◆
19	Nut, 1/2-13 Jam	F05010-31	2	
	Instruction Sheet, Seat Bolt Retrofit	015967-245	1	
20	Screw, 3/8-16 x 1" Socket Head	F05007-52	2	
21	Nut, 1/2-13 Jam	F05010-31	1	
22	Frame Weldment, Operator Seat	015775 ¹	1	◆
23	Latch, Operator Seat	S11337	1	
24	Bearing, Seat Roller	012797 ¹	8	
25	Nut, 5/8-18 Hex Jam	F05010-11	8	
26	Bolt, 1/2-13 x 2 1/4" Hex Head Full Thread Tap	F05008-27	1	
27	Bar Weldment, Lower Bearing	015779 ¹	1	
28	Plate, Operator Seat Revision	005801-OS	1	
29	Rivet, 1/8x1/4 Alum AA44D Pop	F04203-2	4	
	Adjuster Assembly, Operator Seat (Milsco)	038720 ²	1	
	Manual, 1997 Operator's Seat Option	M613 ³	1	

¹ Seat Frame, Lower Roller Bar, and Roller Bearings revised with Rev. B.00 for better durability and rolling performance.

Also, 012797 McGill unit directly replaces P12843 RBC unit originally supplied (1/00).

² Seat 038719 replaces P26206 originally supplied (new vendor). Use new adjuster assembly 038720 to service either seat (replaces 036754 originally supplied with old seat).

³ Guard modified to better clear roller mount nuts on Rev. B.01. 4 1/2" Bolt replaces F05008-91 4" Bolts supplied until Rev. B.01. M613 Operator's Manual replaces OS-613 (Part number format change only).

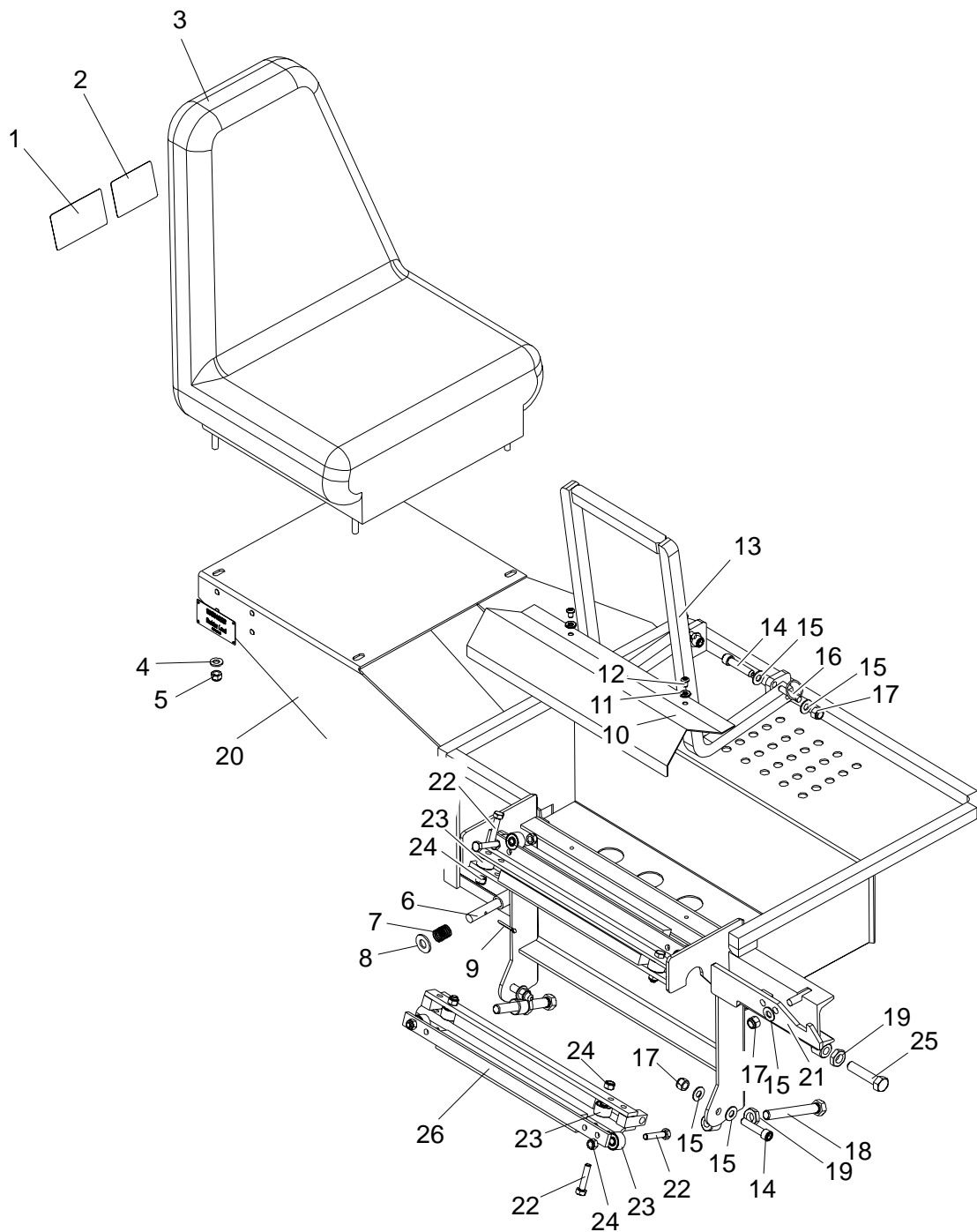
⁴ Lock nuts replace F05010-10 Nylon lock nuts supplied until Rev. B.02.

⁵ Some seats manufactured before 11/97 may require retrofit kit 015967. The extension feet improve contact of the bolts with the adjustment bracket, allowing full adjustment of the lower rollers.

2.5 Operator Seat

OS

Rev. A.00¹



3H0414

REF	DESCRIPTION (◆ Indicates Parts Available In Assemblies Only)	PART #	QTY.	
	OPERATOR SEAT OPTION, COMPLETE '97	OS ¹	1	
1	Decal, Remove Operator Seat Warning	S12000	1	
2	Decal, 300 Lb. Capacity Caution	S11999	1	
3	Seat, Operator	038719 ²	1	
4	Washer, 5/16" SAE Flat	F05011-17	4	
5	Nut, 5/16-18 Nylon Lock	F05010-58	4	
6	Pin, Operator Seat Travel Lock	S11335	1	
7	Spring, Operator Seat Travel Pin	P04282	1	
8	Washer, 1/2" SAE Flat	F05011-2	1	
9	Pin, 1/8" X 1" Cotter	F05012-1	2	
10	Guard, OS Bearing	014743 ¹	1	◆
11	Washer, 1/4" Split Lock	F05011-14	2	
12	Screw, 1/4-20 x 3/8" Socket Button Head	F05005-62	2	
13	Step Weldment, OS	014736	1	
14	Screw, 3/8-16 x 1 3/4" Socket Head	F05007-53	4	
15	Washer, 3/8" Flat	F05011-3	9	
16	Pin, 5/16 x 1" Detaining	F05012-45	2	
17	Nut, 3/8-16 Hex Nylon Lock	F05010-10	5	
18	Bolt, 1/2-13 x 4" HH GR 2	F05008-91	2	
19	Nut, 1/2-13 Jam	F05010-31	3	
20	Frame Weldment, Operator Seat	014594 ¹	1	◆
21	Latch, Operator Seat	S11337	1	
22	Bolt, 5/16-18 x 1 1/2" HH GR5	F05006-76	9	
23	Bearing, Double Row	014599 ¹	9	◆
24	Nut, 5/16-18 Nylon Hex	F05010-65	9	
25	Bolt, 1/2-13 x 2 1/4" Hex Head Full Thread Tap	F05008-27	1	
26	Bar Weldment, Lower Bearing	014625 ¹	1	◆
	Plate, Operator Seat Revision	005801-OS	1	
	Rivet, 1/8x1/4 Alum AA44D Pop	F04203-2	4	
	Adjuster Assembly, Operator Seat (Milsco)	038720 ²	1	
	Manual, 1997 Operator's Seat Option	M613 ³	1	

¹ Operator Seat revised 7/97. Lower rollers and seat frame redesigned for improved durability. Upgrade kit OS-R no longer available. Customer should replace entire seat assembly ([See Section 2.4](#)).

² Seat 038719 replaces P26206 originally supplied (new vendor). Use new adjuster assembly 038720 to service either seat (replaces 036754 originally supplied with old seat).

³ M613 Operator's Manual replaces OS-613 (Part number format change only).