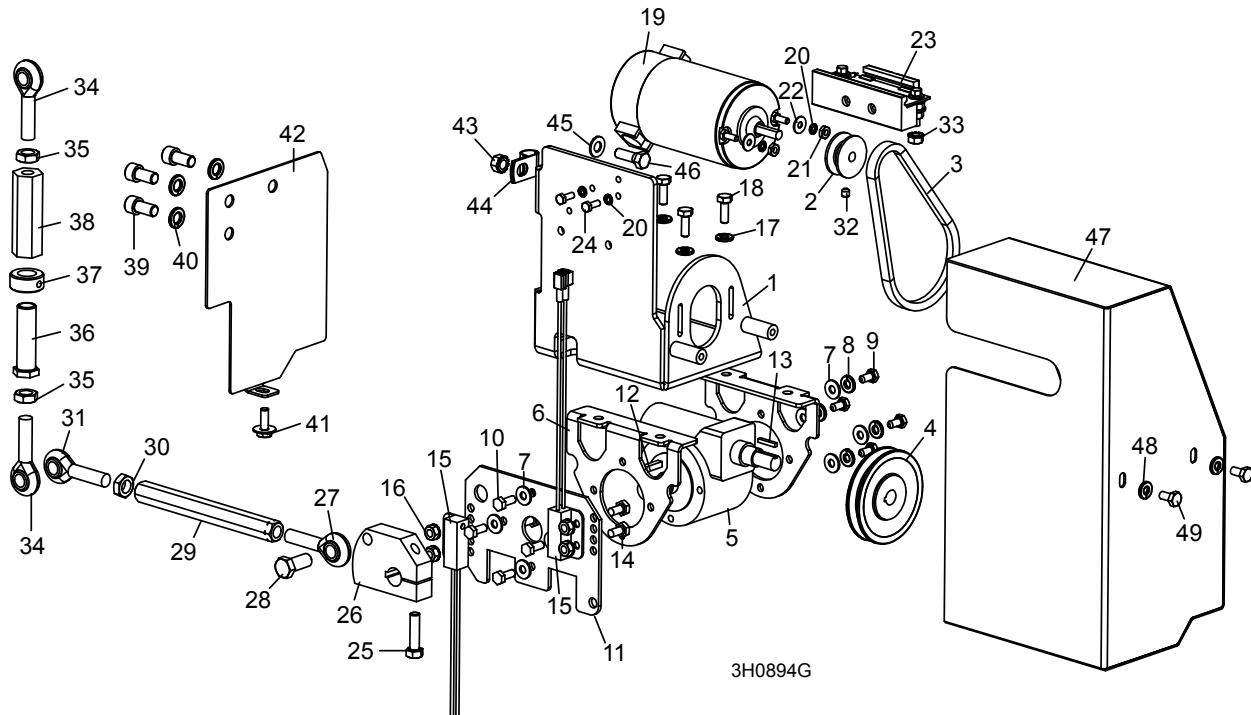


SECTION 4 REPLACEMENT PARTS

4.1 Autoclutch Assembly (Super/Standard)

Rev. A.08+



REF	DESCRIPTION (◆ Indicates Parts Available In Assemblies Only)	PART #	QTY.
	CLUTCH ASSEMBLY, AUTOMATIC	024620	1
1	Mount Weldment, Autoclutch Gearbox	016216	1
2	Sheave, 1.42 x .32	015074	1
3	Belt, 3L150	015076 ¹	1
4	Sheave, 0K30 x 1/2	015075	1
	Gearbox Assembly, Autoclutch	036786	1
5	Gearbox, 61:1 512 Reducer	036764	1
6	Mount Weldment, Autoclutch Gearbox	036807	2
7	Washer, 1/4" SAE Flat	F05011-11	8
8	Washer, 1/4" Split Lock	F05011-14	4
9	Bolt, M6 x 12 Full Thread Grade 8.8 Hex Head	F05005-99	4
10	Bolt, M6 x 1 x 16mm Hex Head	F05004-219	4
11	Plate, Sensor Mount	036785	1
12	Key, 3/16" Sq. x 3/4" Long	S03060	1
13	Key, 1/8" Sq. x 3/4" Long	036803	1
14	Bolt, M6 x 12 Hex Head Full Thread Grade 8	F05005-99 ²	4
15	Sensor Assembly, Proximity Magnetic	024627	2
16	Nut, M6-1.0 Hex Nylon Lock	F05010-200 ²	4

4

Replacement Parts

Autoclutch Assembly (Super/Standard)

17	Washer, 1/4" Split Lock	F05011-14	4	
18	Bolt, 1/4-20 x 3/4" Hex Head Grade 5	F05005-123	4	
19	Motor Assembly, Autoclutch Replacement	016021	1	
	Brush Kit, Autoclutch Leeson Motor External	034002	1	
20	Washer, #10 Split Lock	F05011-20	4	
21	Nut, #10-32 Hex	F05010-27	2	
22	Washer, #10 SAE Flat	F05011-18	2	
	Module Kit, Autoclutch Upgrade	052791 ³	1	
23	Module Assembly, Mosfet 4X Autoclutch	024618 ³	1	◆
	Capacitor Assembly, 1000uF with 1/4" Ring Terminals	024163 ³	1	
	Diode Assembly, Autoclutch Gate	061052	1	
	Tie Wrap, 3/16" x 6" Black UV	F05089-3	1	
	Instruction Sheet, Autoclutch Mosfet Installation	052791-1260	1	
24	Screw, 10-24 x 1/2" Unslotted Hex Head Stainless Steel Machine	F05004-27	2	
25	Bolt, 5/16-24 x 1 1/4" Hex Head	F05006-21	1	
26	Cam, Auto Clutch	016323	1	
27	Rod End, 7/16-20 Left-Hand Male	P11578 ⁴	1	
28	Screw, 7/16-20 x 1" Hex Head Grade 5	F05007-151	1	
29	Rod, Clutch Engagement	006622 ⁴	1	
30	Nut, 7/16-20 Jam	F05010-38	1	
31	Rod End, 7/16-20 Right-Hand Male	P11579	1	
32	Screw, 1/4-28 x 1/4" Cup Point Socket Set	F05005-105	1	
33	Nut, 1/4-20 Self Locking	F05010-9	1	
	Cap, Rubber Wire	036644	1	
34	ROD END, 7/16-20 RIGHT-HAND MALE	P11579	2	
35	NUT, 7/16-20 HEX JAM	F05010-38	2	
	ROD KIT, AUTOCLUTCH INNER/OUTER LINK	016325	1	
36	Rod, Autoclutch Inner Link	015070	1	◆
37	Collar, 5/8" ID Lock	P05035 ⁵	1	
38	Rod, Autoclutch Outer Link	015071	1	◆
39	BOLT, 3/8-16 X 3/4" SOCKET HEAD	F05005-104	3	
40	WASHER, 3/8" SPLIT	F05011-4	3	
41	BOLT, 1/4-20 X 3/4" HEX HEAD W/CONICAL WASHER	F05005-134	1	
42	GUARD, AUTOCLUTCH BACK	016232	1	
43	NUT, 5/16-18 SELF-LOCKING HEX	F05010-20	1	
44	CLAMP, 1/2" COATED EMT	P07584	1	
45	WASHER, 5/16" SAE FLAT	F05011-17	1	
46	BOLT, 5/16-18 X 1" HEX HEAD	F05006-1	1	
47	GUARD WELDMENT, AUTOCLUTCH	015735	1	
48	WASHER, 1/4" SPLIT LOCK	F05011-14	2	
49	BOLT, 1/4-20 X 1/2" HEX HEAD	F05005-15	2	

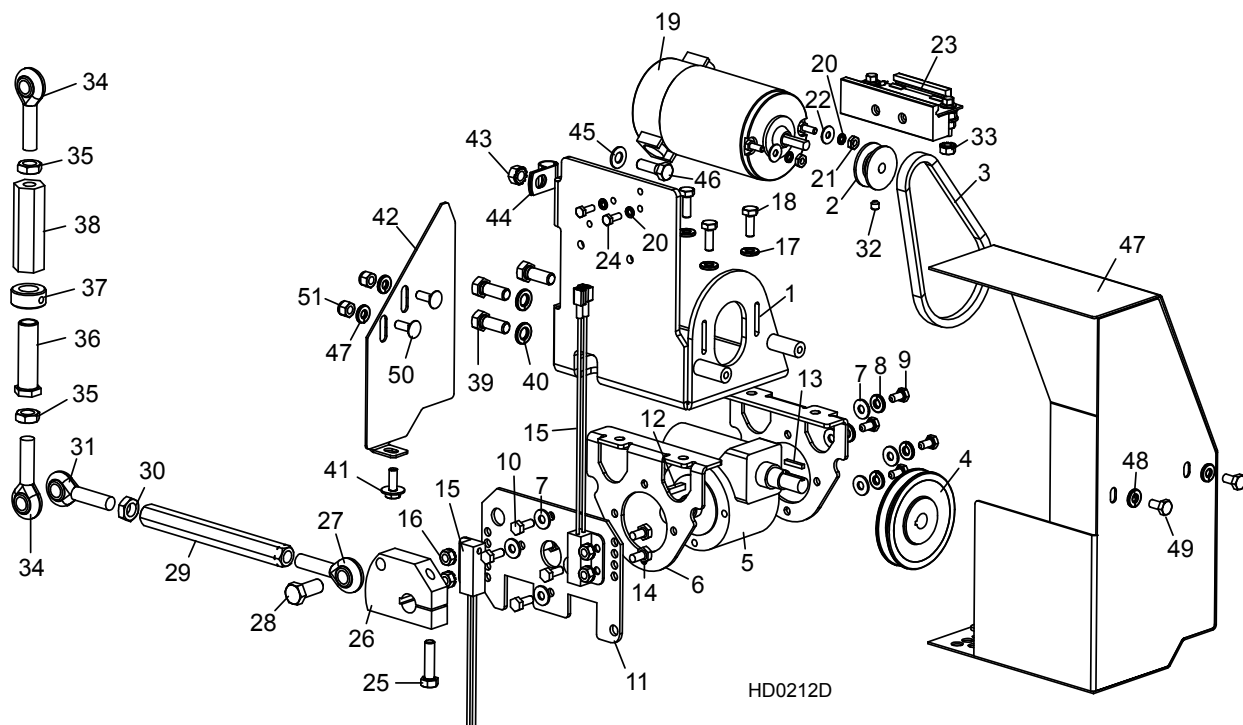
¹ Replaces 3L140 Belt 016219 originally supplied prior to Rev. A.10 (belt too short).

- ² 1/4" sensor mounting bolts F05005-15 and nuts F05010-9 replaced with M6 bolts F05005-99 and nuts F05010-200 (9/09). Using M6 hardware eliminates need to redrill sensor mounting holes for 1/4" hardware. New hardware can be used to service all previous assemblies.
- ³ Use Mosfet Module Upgrade Kit 052791 to replace original Mosfet Module 024618. Upgrade includes Capacitor Assembly 024163 and Mosfet Assembly with added diode supplied Rev. A.09 and later. This upgrade protects against inductive voltage spikes.
- ⁴ Engagement Rod 015062 and Right-Hand Rod End 015254 replaced with Rod 006622 and Left-Hand Rod End P11578 to enable adjustment of engagement rod without disassembling the rod (Rev. A.12).
- ⁵ Collar is used as spacer to provide increased range of adjustment on Kubota, Caterpillar & Yanmar diesel and G38 sawmills ONLY.

4 Replacement Parts Autoclutch Assembly (Hydro)

4.2 Autoclutch Assembly (Hydro)

Rev. A.10+



REF	DESCRIPTION (◆ Indicates Parts Available In Assemblies Only)	PART #	QTY.
	CLUTCH ASSEMBLY, AUTOMATIC	024620	1
1	Mount Weldment, Autoclutch Gearbox	016216	1
2	Sheave, 1.42 x .32	015074	1
3	Belt, 3L150	015076	1
4	Sheave, 0K30 x 1/2	015075	1
	Gearbox Assembly, Autoclutch	036786	1
5	Gearbox, 61:1 512 Reducer	036764	1
6	Mount Weldment, Autoclutch Gearbox	036807	2
7	Washer, 1/4" SAE Flat	F05011-11	8
8	Washer, 1/4" Split Lock	F05011-14	4
9	Bolt, M6 x 12 Full Thread Grade 8.8 Hex Head	F05005-99	4
10	Bolt, M6 x 1 x 16mm Hex Head	F05004-219	4
11	Plate, Sensor Mount	036785	1
12	Key, 3/16" Sq. x 3/4" Long	S03060	1
13	Key, 1/8" Sq. x 3/4" Long	036803	1
14	Bolt, M6 x 12 Hex Head Full Thread Grade 8	F05005-99 ¹	4
15	Sensor Assembly, Proximity Magnetic	024627	2
16	Nut, M6-1.0 Hex Nylon Lock	F05010-200 ²	4
17	Washer, 1/4" Split Lock	F05011-14	4

Replacement Parts 4

Autoclutch Assembly (Hydro)

18	Bolt, 1/4-20 x 3/4" Hex Head Grade 5	F05005-123	4	
19	Motor Assembly, Autoclutch Replacement	016021	1	
	Brush Kit, Autoclutch Leeson Motor External	034002	1	
20	Washer, #10 Split Lock	F05011-20	4	
21	Nut, #10-32 Hex	F05010-27	2	
22	Washer, #10 SAE Flat	F05011-18	2	
	Module Kit, Autoclutch Upgrade	052791	1	
23	Module Assembly, Mosfet 4X Autoclutch	024618	1	◆
	Capacitor Assembly, 1000uF with 1/4" Ring Terminals	024163	1	
	Diode Assembly, Autoclutch Gate	061052	1	
	Tie Wrap, 3/16" x 6" Black UV	F05089-3	1	
	Instruction Sheet, Autoclutch Mosfet Installation	052791-1260	1	
24	Screw, 10-24 x 1/2" Unslotted Hex Head Stainless Steel Machine	F05004-27	2	
25	Bolt, 5/16-24 x 1 1/4" Hex Head	F05006-21	1	
26	Cam, Auto Clutch	016323	1	
27	Rod End, 7/16-20 Left-Hand Male	P11578 ²	1	
28	Screw, 7/16-20 x 1" Hex Head Grade 5	F05007-151	1	
29	Rod, Clutch Engagement	006622 ²	1	
30	Nut, 7/16-20 Jam	F05010-38	1	
31	Rod End, 7/16-20 RH Male	P11579	1	
	Cap, Rubber Wire	036644	1	
32	Screw, 1/4-28 x 1/4" Socket Head Cup Point Set	F05005-105	1	
33	Nut, 1/4-20 Self Locking	F05010-9	1	
34	ROD END, 7/16-20 RIGHT-HAND MALE	P11579	2	
35	NUT, 7/16-20 HEX JAM	F05010-38	2	
	ROD KIT, AUTOCLUTCH INNER/OUTER LINK	016325	1	
36	Rod, Autoclutch Inner Link	015070	1	◆
37	Collar, 5/8" ID Lock	P05035	1	
38	Rod, Autoclutch Outer Link	015071	1	◆
39	BOLT, 3/8-16 X 3/4" HEX HEAD GRADE 8	F05007-87	3	
40	WASHER, 3/8" SPLIT	F05011-4	3	
41	BOLT, 1/4-20 X 3/4" HEX HEAD W/CONICAL WASHER	F05005-134	1	
42	GUARD, AUTOCLUTCH BACK (HYDRO)	003989	1	
43	NUT, 5/16-18 SELF-LOCKING HEX	F05010-20	1	
44	CLAMP, 1/2" COATED EMT	P07584	1	
45	WASHER, 5/16" SAE FLAT	F05011-17	1	
46	BOLT, 5/16-18 X 1" HEX HEAD	F05006-1	1	
47	GUARD WELDMENT, AUTOCLUTCH (HYDRO)	003988	1	
48	WASHER, 1/4" SPLIT LOCK	F05011-14	4	
49	BOLT, 1/4-20 X 1/2" HEX HEAD	F05005-15	2	
50	BOLT, 1/4-20 X 3/4" CARRIAGE HEAD	F05005-113	2	
51	NUT, 1/4-20 HEX NYLON LOCK	F05010-69	2	

4

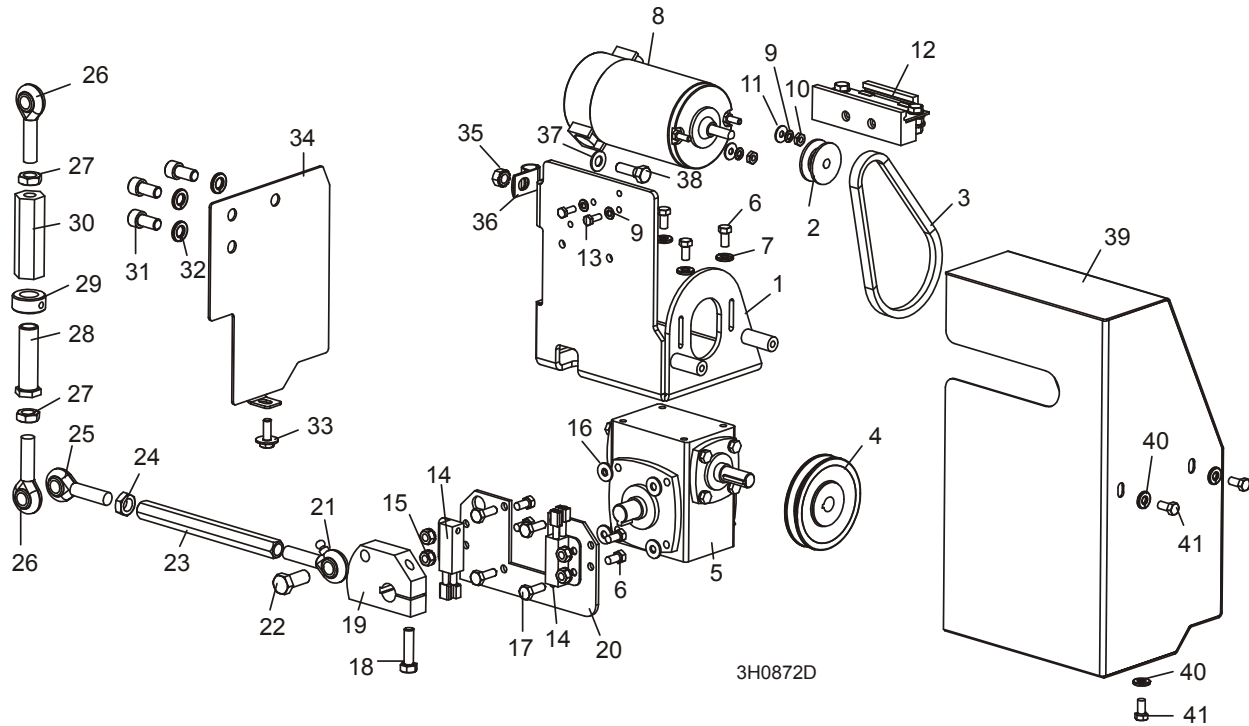
Replacement Parts

Autoclutch Assembly (Hydro)

- ¹ 1/4" sensor mounting bolts F05005-15 and nuts F05010-9 replaced with M6 bolts F05005-99 and nuts F05010-200 (9/09). Using M6 hardware eliminates need to redrill sensor mounting holes for 1/4" hardware. New hardware can be used to service all previous assemblies.
- ² Engagement Rod 015062 and Right-Hand Rod End 015254 replaced with Rod 006622 and Left-Hand Rod End P11578 to enable adjustment of engagement rod without disassembling the rod (Rev. A.12).

4.3 Autoclutch Assembly (Super/Standard)

Rev. A.00 - A.07



REF	DESCRIPTION (◆ Indicates Parts Available In Assemblies Only)	PART #	QTY.	
	CLUTCH ASSEMBLY, AUTOMATIC	024620 ¹	1	
1	Mount Weldment, Autoclutch Gearbox	016216	1	
2	Sheave, 1.42 x .32	015074	1	
3	Belt, 3L140	016219	1	
4	Sheave, 0K30 x 1/2	015075	1	
5	Gearbox, 60:1 I034	015067 ²	1	◆
6	Bolt, 1/4-20 x 1/2" Hex Head	F05005-15	8	
7	Washer, 1/4" Split Lock	F05011-14	4	
8	Motor Assembly, Autoclutch Replacement	016021 ³	1	
	Brush Kit, Autoclutch Leeson Motor External	034002 ⁴	1	
	Brush Kit, Autoclutch Owosso Motor External	A12198 ⁴	1	
9	Washer, #10 Split Lock	F05011-20	2	
10	Nut, #10-32 Hex	F05010-27	2	
11	Washer, #10 SAE Flat	F05011-18 ⁵	2	
	Module Kit, Autoclutch Upgrade	052791 ⁶	1	
12	Module Assembly, Mosfet 4X Autoclutch	024618 ⁶	1	◆

4

Replacement Parts

Autoclutch Assembly (Super/Standard)

	Capacitor Assembly, 1000uF with 1/4" Ring Terminals	024163 ⁶	1	
	Diode Assembly, Autoclutch Gate	061052	1	
	Tie Wrap, 3/16" x 6" Black UV	F05089-3	1	
	Instruction Sheet, Autoclutch Mosfet Installation	052791-1260	1	
13	Screw, 10-24 x 1/2" Unslotted Hex Head Stainless Steel Machine	F05004-27	2	
14	Sensor Assembly, Proximity Magnetic	024627	2	
15	Nut, 1/4-20 Self Locking	F05010-9 ¹	4	
16	Washer, 1/4" SAE Flat	F05011-11	4	
17	Bolt, 1/4-20 x 3/4" Full Thread Hex Head Cap	F05005-1 ¹	4	
18	Bolt, 5/16-24 x 1 1/4" Hex Head	F05006-21	1	
	Cam Kit, Autoclutch Retro w/Bracket	046567 ⁷	1	
19	Cam, Auto Clutch	016323	1	◆
20	Plate, Sensor Mounting	016324	1	◆
21	Rod End, R/H w/Grease Zerk	015254 ¹	1	
22	Screw, 7/16-20 x 1" Hex Head Grade 5	F05007-151 ⁸	1	
23	Rod, Clutch Engagement	015062 ¹	1	
24	Nut, 7/16-20 Jam	F05010-38	1	
25	Rod End, 7/16-20 RH Male	P11579	1	
26	ROD END, 7/16-20 RIGHT-HAND MALE	P11579	2	
27	NUT, 7/16-20 HEX JAM	F05010-38	2	
	ROD KIT, AUTOCLUTCH INNER/OUTER LINK	016325	1	
28	Rod, Autoclutch Inner Link	015070	1	◆
29	Collar, 5/8" ID Lock	P05035 ⁹	1	
30	Rod, Autoclutch Outer Link	015071	1	◆
31	BOLT, 3/8-16 X 3/4" SOCKET HEAD	F05005-104	3	
32	WASHER, 3/8" SPLIT	F05011-4	3	
33	BOLT, 1/4-20 X 3/4" HEX HEAD W/CONICAL WASHER	F05005-134	1	
34	GUARD, AUTOCLUTCH BACK	016232	1	
35	NUT, 5/16-18 SELF-LOCKING HEX	F05010-20	1	
36	CLAMP, 1/2" COATED EMT	P07584	1	
37	WASHER, 5/16" SAE FLAT	F05011-17	1	
38	BOLT, 5/16-18 X 1" HEX HEAD	F05006-1	1	
39	GUARD WELDMENT, AUTOCLUTCH	015735	1	
40	WASHER, 1/4" SPLIT LOCK	F05011-14 ¹⁰	2	
41	BOLT, 1/4-20 X 1/2" HEX HEAD	F05005-15 ¹⁰	2	

¹ Autoclutch Assembly 024620 modified 7/08 with new engagement rod and rod end to enable adjustment of engagement rod without disassembling rod ([See Section 4.1](#)). 1/4" sensor mounting bolts F05005-1 and nuts F05010-9 replaced with M6 bolts F05005-99 and nuts F05010-200 (9/09). Using M6 hardware eliminates need to redrill sensor mounting holes for 1/4" hardware. New hardware can be used to service all previous assemblies.

² Gearbox 015067 (square) replaced with Gearbox Assembly 036786 for improved durability (Rev. A.08).

³ Motor kit revised 10/01. Leeson motor 016706 replaces Leeson motor 034001 (12/00) and Owosso motor P12093 originally supplied.

⁴ Use 034002 Brush Kit for Leeson motors supplied after 12/00 (Rev. A.04). Use A12198 Brush Kit for Owosso motor originally supplied prior to Rev. A.04.

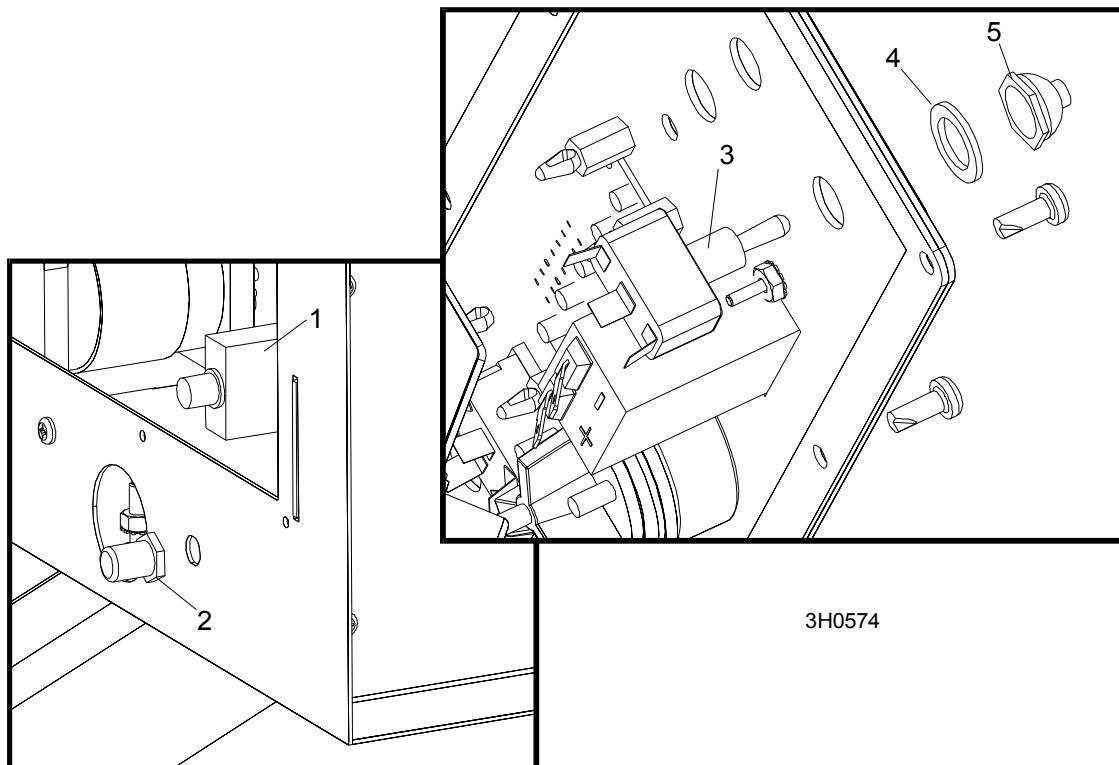
⁵ Flat washers added Rev. A.06 to make adjustment of motor belt easier.

- ⁶ Use Mosfet Module Upgrade Kit 052791 to replace original Mosfet Module 024618. Upgrade includes Capacitor Assembly 024163 and Mosfet Assembly with added diode supplied 5/06 and later. This upgrade protects against inductive voltage spikes.
- ⁷ Bracket revised to increase sensor adjustment. Cam revised to accommodate new bracket. Use kit 046567 to replace either part.
- ⁸ Hex head bolt F05007-151 actually used in assembly - not socket head bolt F05007-117.
- ⁹ Lock collar added Rev. A.02. Collar is used as spacer to provide increased range of adjustment on Kubota, Caterpillar & Yanmar diesel and G38 sawmills ONLY.
- ¹⁰ Bottom slot in guard, bolt and washer removed (Rev. A.07).

4 Replacement Parts

Autoclutch Control Parts

4.4 Autoclutch Control Parts

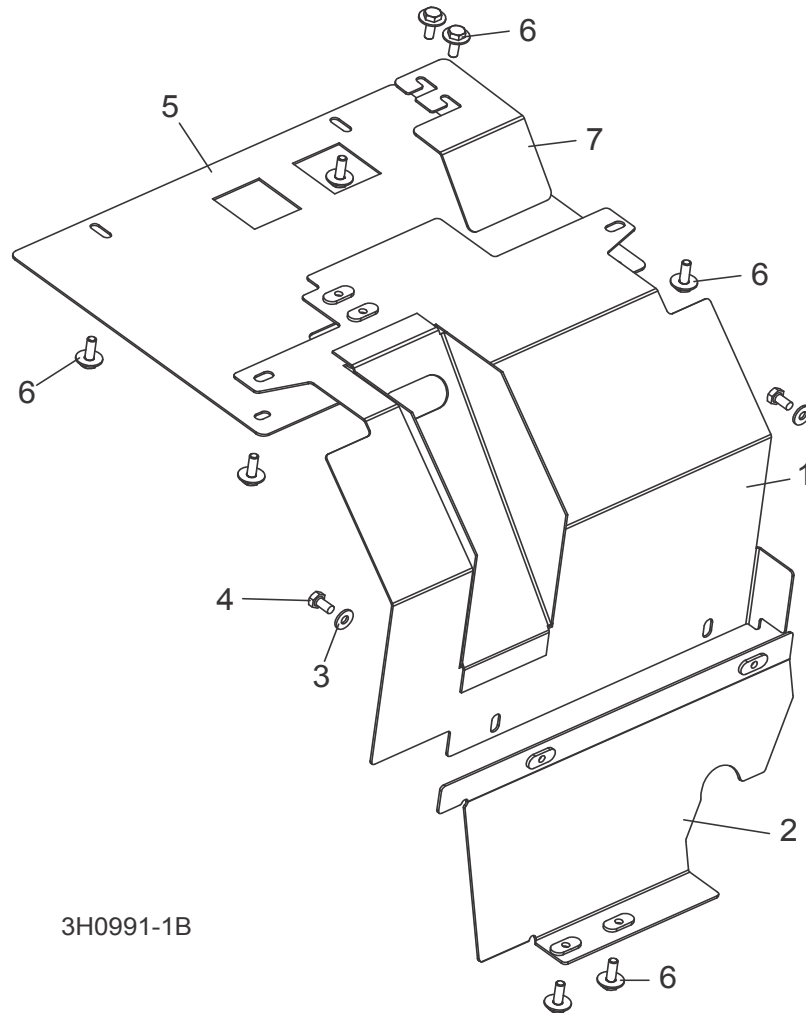


REF	DESCRIPTION (◆ Indicates Parts Available In Assemblies Only)	PART #	QTY.
1	BREAKER, 30A MANUAL RESET PANEL MOUNT	024246	1
2	BOOT, CIRCUIT BREAKER	021253	1
3	SWITCH, ON/ON TOGGLE SPDT	051346 ¹	1
4	WASHER, 1/2" ID X 3/4" OD X 1/16" THICK NYLON	P05251-1	1
5	BOOT, TOGGLE SWITCH	P02575	1

¹051346 On/On Toggle Switch replaces 015665 On/Off/On Toggle Switch supplied before 8/03. Center OFF position not required for Autoclutch operation.

4.5 Belt Guards

Rev. A.11+



REF	DESCRIPTION (◆ Indicates Parts Available In Assemblies Only)	PART #	QTY.
1	GUARD WELDMENT, AUTOMATIC CLUTCH	006026	1
2	MOUNT WELDMENT, CLUTCH GUARD	006025	1
3	WASHER, 1/4" SAE FLAT	F05011-11	2
4	BOLT, 1/4-20 X 1/2" HEX HEAD	F05005-15	2
5	PLATE, LOWER BELT AUXILIARY GUARD	016089 ¹	1
6	BOLT, 1/4-20 X 3/4" HEX HEAD WITH CONICAL WASHER	F05005-134	8
7	PLATE, LT40 BELT GUARD COVER	074752 ²	1

¹ Auxiliary plate required for Non-Super models without board return mechanism.

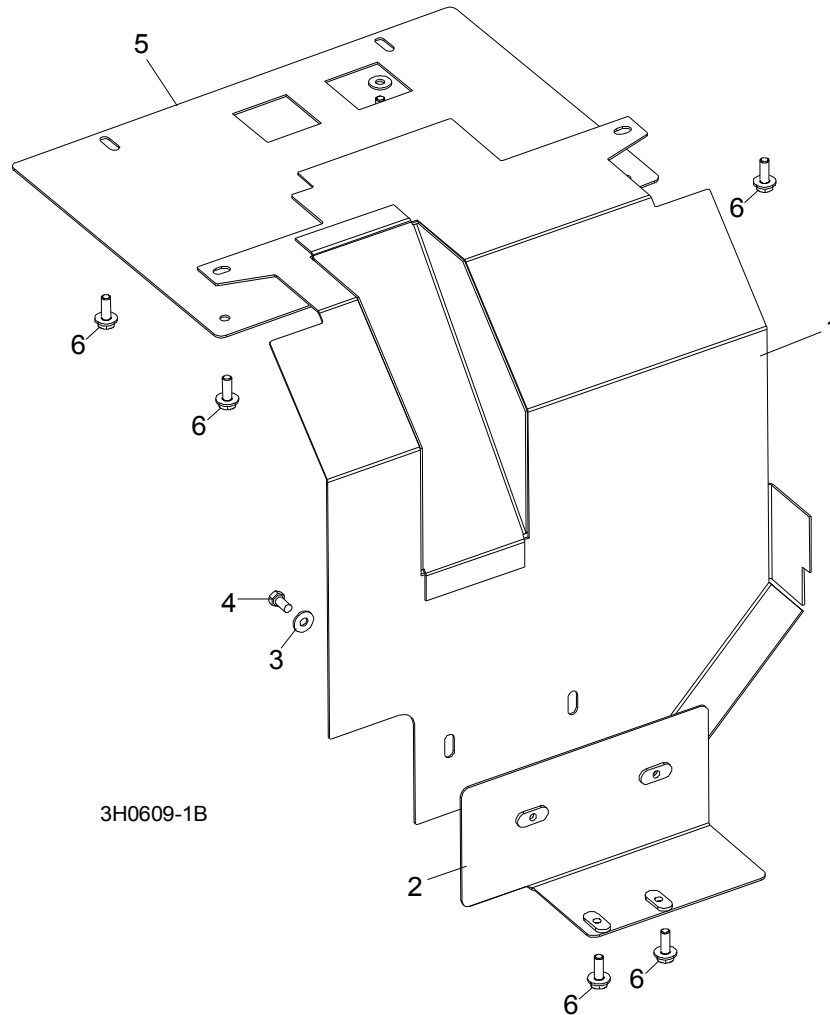
² Added to cover access opening cut in guard weldment to check belt tension (9/15).

4 Replacement Parts

Belt Guards

4.6 Belt Guards

Rev. A.00 - A.10



REF	DESCRIPTION (◆ Indicates Parts Available In Assemblies Only)	PART #	QTY.	
	GUARD ASSEMBLY, AUTOCLUTCH LEVER	015248 ¹	1	◆
1	Guard Weldment, Automatic Clutch	015656	1	
2	Mount Weldment, Clutch Guard	015678	1	
3	Washer, 1/4" SAE Flat	F05011-11	2	
4	Bolt, 1/4-20 x 1/2" Hex Head	F05005-15	2	
5	PLATE, LOWER BELT AUXILIARY GUARD	016089 ²	1	
6	BOLT, 1/4-20 X 3/4" HEX HEAD WITH CONICAL WASHER	F05005-134	6	

¹ Guard assembly no longer available. Use component parts to service or upgrade to current guards ([See Section 4.5](#)).

² Auxiliary plate required for Non-Super models without board return mechanism.